

Bibliography of the *South African Journal of Antarctic Research*

J R E Lutjeharms

Department of Oceanography, University of Cape Town, 7700 Rondebosch, South Africa
 Department of Zoology and Entomology, Rhodes University, P O Box 94, 6140 Grahamstown, South Africa and
 Department of Geography and Environmental Management, Rand Afrikaans University, P O Box 524, 2000 Johannesburg, South Africa

Introduction

This is the last edition of the South African Journal of Antarctic Research.

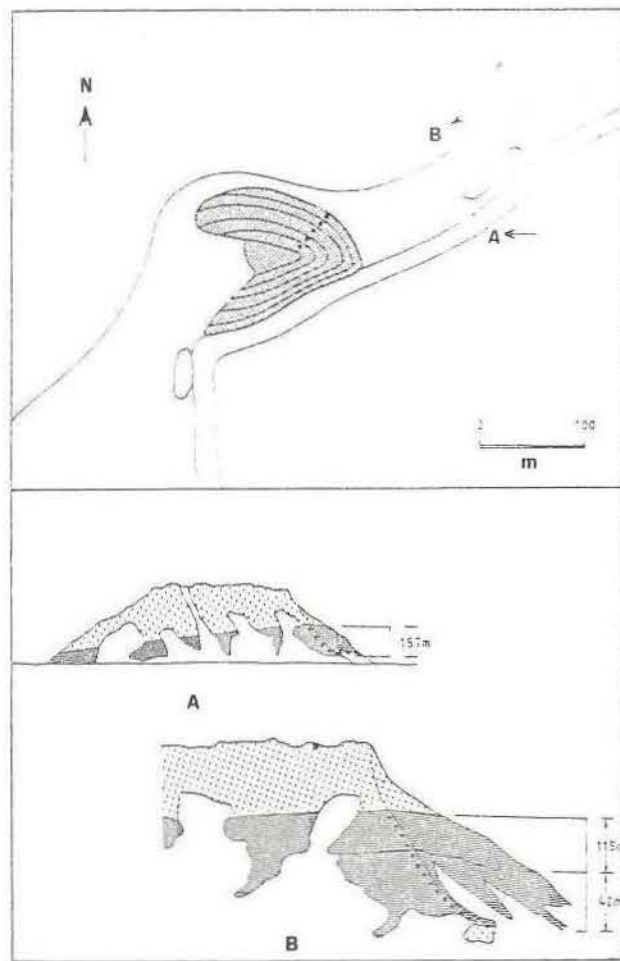
This journal was first published in 1971 and during the subsequent period of 26 years it has contained a wide range of articles and reports. Articles reporting results stemming from basic research, historical articles on Antarctic research endeavours, as well as notes and news on South African participation in Antarctic work have been included in the pages of this journal. The latter are a rich archival source of information on the participants in South Africa's Antarctic Programme over the years. Climatological data from the South African weather stations in the subantarctic have regularly been published, making a valuable set of environmental data available to the international scientific community. Research articles and notes have covered a wide spectrum of disciplines including geology, meteorology, physical oceanography, marine biology, ornithology, ichthyology and others.

The journal has been distributed widely to libraries and to individuals who have an interest in Antarctic and Southern Ocean matters. During the last few years the scope of the journal and the number as well as quality of the scientific contributions have increased, thus attracting increasing numbers of manuscripts from abroad. Decreasing funds have however forced the South African Committee for Antarctic Research to make a decision to terminate the journal.

The purpose of the bibliography that follows is to make the full set of research articles and notes published in the South African Journal of Antarctic Research over the past 26 years available to the scientific community in an easily accessible way. Only scientific and historical articles with identified authors have been included. The bibliography is arranged in an alphabetical order, by the names of authors, and also in a chronological sequence, in order to give easy access to the information. The last editorial staff of the journal hope that this bibliography will be useful for current and future users.

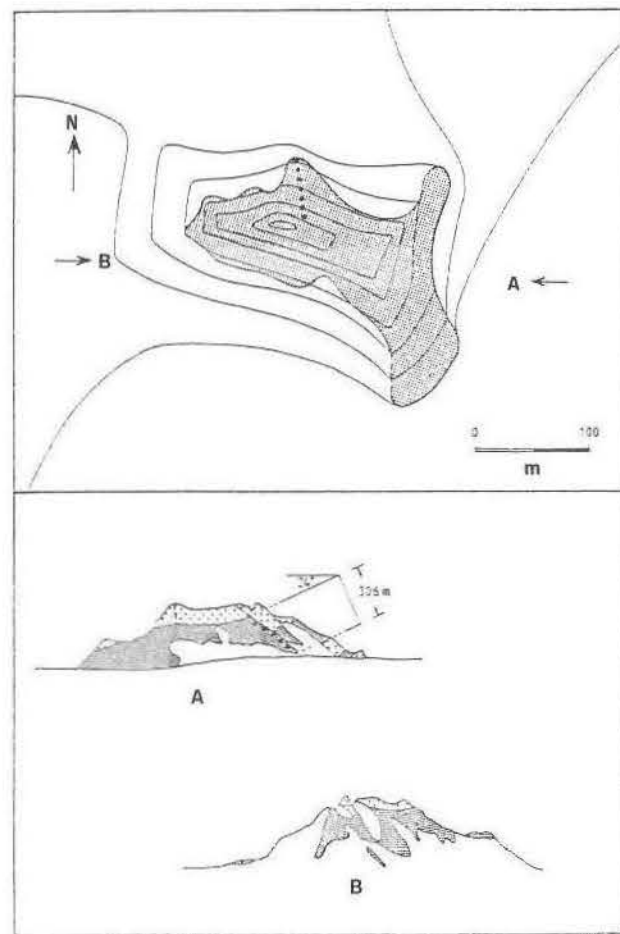
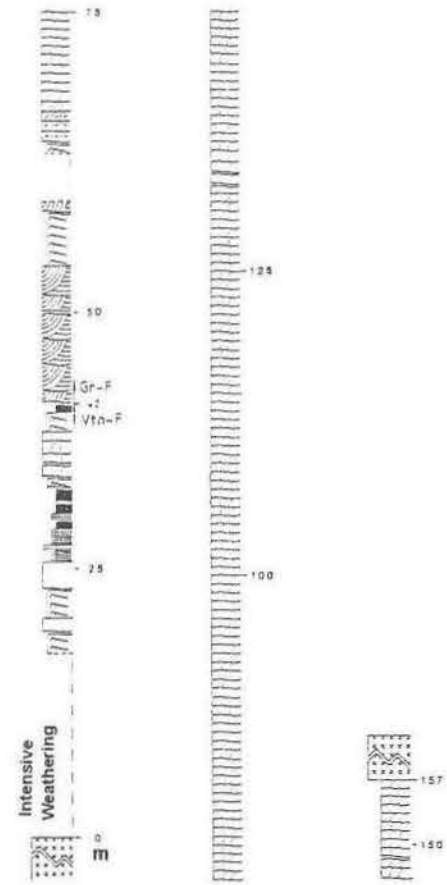
Alphabetical listing

- ABRAMS RW 1983. Distribution of seabirds in the African sector of FIBEX. *S. Afr. J. Antarct. Res.* 13: 24-28
- ADAMS NJ *see* Brown CR, NT Klages & NJ Adams 1990. Short and medium-term variation in the diets of penguins at Marion Island. *S. Afr. J. Antarct. Res.* 20(1): 13-20
- AGENBAG JJ *see* Cram DL, JJ Agenbag, I Hampton & AA Robertson 1979. SAS *Protea* Cruise, 1978. The general results of the acoustics and remote sensing study, with recommendations for estimating the abundance of krill (*Euphasia superba* Dana). *S. Afr. J. Antarct. Res.* 9: 3-14
- ALBERTS HW *see* Van der Walt AJ, PH Stoker & HW Alberts 1972. Latitude distribution of cosmic rays at sea level from 1963 to 1970. *S. Afr. J. Antarct. Res.* 2: 48-52
- ALLANSON BR 1985. VII. Light, chlorophyll a and primary production. *S. Afr. J. Antarct. Res.* 15: 24-27
- ALLANSON BR & BODEN BP 1985. Preliminary results of the South African SIBEX I Cruise to the Prydz Bay region, Antarctica, 15 March - 3 May 1984: Overall Résumé. *S. Afr. J. Antarct. Res.* 15: 3-5
- ALLANSON BR & PARKER L 1985. I. Introduction, track charts and cruise description. *S. Afr. J. Antarct. Res.* 15: 6-7
- ALLANSON BR, HART RC & LUTJEHARMS JRE 1981. Observations on the nutrients, chlorophyll and primary production of the Southern Ocean south of Africa. *S. Afr. J. Antarct. Res.* 10/11: 3-14
- ALLEN AR *see* Krynauw JR, AR Allen, SH Auret & V von Brunn 1983. A note on breeding sites of snow petrels (*Pagodroma nivea*) at Robertskollen, Boreas and Passat nunataks and Johnsbrotet, western Dronning Maud Land, Antarctica. *S. Afr. J. Antarct. Res.* 13: 51-53
- ALVÀ V *see* Branch ML, M Jangoux, V Alvà, CI Massin & S Stapanato 1993. The Echinodermata of subantarctic Marion and Prince Edward Islands. *S. Afr. J. Antarct. Res.* 23(1 & 2): 37-70
- ANDERSON GD & CONDY PR 1974. A note on the



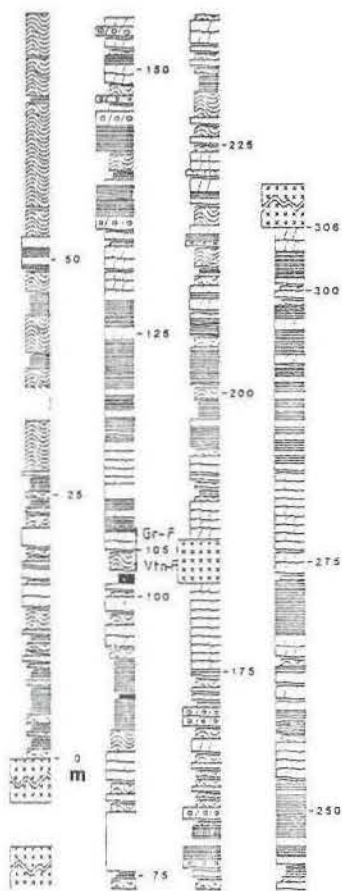
17.

OVBATTEN



18.

RYVINGEN



- feral house cat and house mouse on Marion Island. *S. Afr. J. Antarct. Res.* 4: 58-61
- ANDREW T G & HECHT T 1992. Feeding biology of *Acantholatris monodactylus* (Pisces: cheilodactylidae) at Tristan da Cunha and Gough Island, South Atlantic. *S. Afr. J. Antarct. Res.* 22(1 & 2): 41-49
- APPS PJ 1986. A case study of an alien predator (*Felis catus*) introduced on Dassen Island; selective advantages. *S. Afr. J. Antarct. Res.* 16(3): 118-122
- APPS P *see* Panagis K, P Apps & MH Knight 1982. Seal Finger: occurrence in Antarctica. *S. Afr. J. Antarct. Res.* 12: 49
- ARNAUD F & BRANCH ML 1991. The Pycnogonida of subantarctic Marion and Prince Edward Islands: Illustrated keys to the species. *S. Afr. J. Antarct. Res.* 21(1): 65-71
- ARNAUD PM *see* Branch ML, PM Arnaud, J Cantera & D Gianakouras 1991. The benthic Mollusca and Brachiopoda of subantarctic Marion and Prince Edward Islands: 1) Illustrated keys to the species, 2) Records of the 1982-1989 University of Cape Town Surveys. *S. Afr. J. Antarct. Res.* 21(1): 45-64
- ASHTON PJ *see* Smith VR & PJ Ashton 1981. Bryophyte-cyanobacteria associations on sub-Antarctic Marion Island: are they important in nitrogen fixation? *S. Afr. J. Antarct. Res.* 10/11: 24-26
- ATTWOOD CG & HEARSHAW KD 1992. Lipid content and composition of sub-Antarctic euphausiids and copepods from the Prince Edward Islands. *S. Afr. J. Antarct. Res.* 22(1 & 2): 3-13
- AUCAMP APH 1972. The geology of Grunehogna, Ahlmannryggen, western Dronning Maud Land. *S. Afr. J. Antarct. Res.* 2: 16-22
- AURET SH *see* Krynauw JR, AR Allen, SH Auret & V von Brunn 1983. A note on breeding sites of snow petrels (*Pagodroma nivea*) at Robertskollen, Boreas and Passat nunataks and Johnsbrotet, western Dronning Maud Land, Antarctica. *S. Afr. J. Antarct. Res.* 13: 51-53
- AVENANT N *see* Chown SL & N Avenant 1992. Status of *Plutella xylostella* at Marion Island six years after its colonisation. *S. Afr. J. Antarct. Res.* 22(1 & 2): 37-40
- AVENANT NL *see* Cooper J, NL Avenant & JCP van Wyk 1994. Observations of the shortsnout lancetfish *Alepisaurus brevirostris* at sub-Antarctic Marion Island. *S. Afr. J. Antarct. Res.* 24(1 & 2): 126.
- BACON EJ *see* Monteiro PMS, EJ Bacon & MJ Orren 1986. The South African SIBEX I Cruise to the Prydz Bay region, 1984. Determination of photosynthetic pigments and their breakdown products by High Performance Liquid Chromatography. *S. Afr. J. Antarct. Res.* 16(1): 21-24
- BALFOUR DA *see* Steele WK, DA Balfour, JM Harris, H Dastych, J Heyns & A Eicker 1994. Preliminary biological survey of Vesleskarvet, northern Ahlmannryggen, western Dronning Maud Land: site of South Africa's new Antarcticbase (sic). *S. Afr. J. Antarct. Res.* 24(1 & 2): 57-65
- BARNARD HP 1975. Radio echo sounding in western Dronning Maud Land, 1974. *S. Afr. J. Antarct. Res.* 5: 37-41
- BERGH HW 1986. Seafloor spreading symmetry between Africa and Antarctica. *S. Afr. J. Antarct. Res.* 16(1): 9-12
- BERGH HW *see* Hunter DR, B Corner, JR Krynauw, A le Roex, GH Grantham, PG Groenewald, AB Moyes, HW Bergh & C Harris 1991. A recent history of South African earth science research in Antarctica and adjacent regions. *S. Afr. J. Antarct. Res.* 21(2): 173-183
- BERRUTI A 1986. The predatory impact of feral cats *Felis catus* and their control on Dassen Island. *S. Afr. J. Antarct. Res.* 16(3): 123-127
- BERRUTI A & HARCUS T 1978. Cephalopod prey of the sooty albatrosses *Phoebastria fusca* and *P. palpebrata* at Marion Island. *S. Afr. J. Antarct. Res.* 8: 99-103
- BERRUTI A, BURGER AE, WILLIAMS AJ & SIEGFRIED WR 1975. Bird ringing on Marion Island. *S. Afr. J. Antarct. Res.* 5: 50-52
- BERRUTI A, GRIFFITHS AM, IMBER MJ, SCHRAMM M & SINCLAIR CJ 1981. The status of seabirds at Prince Edward Island. *S. Afr. J. Antarct. Res.* 10/11: 31-32
- BERRUTI A *see* Williams AJ & A Berruti 1978. Mineral and energy contributions of feathers moulted by penguins, gulls and cormorants to the Marion Island terrestrial ecosystem. *S. Afr. J. Antarct. Res.* 8: 71-75
- BERRUTI A *see* Williams AJ, A Burger and A Berruti 1978. Mineral and energy contributions of carcasses of selected species of seabirds to the Marion Island terrestrial ecosystem. *S. Afr. J. Antarct. Res.* 8: 53-59
- BERRUTI A *see* Siegfried WR, AJ Williams, AE Burger & A Berruti 1978. Mineral and energy contributions of eggs of selected species of seabirds to the Marion Island terrestrial ecosystem. *S. Afr. J. Antarct. Res.* 8: 75-87
- BERRUTI A *see* Williams AJ, AE Burger, A Berruti & WR Siegfried 1975. Ornithological research on Marion Island, 1974-75. *S. Afr. J. Antarct. Res.* 5: 48-50
- BEST PB & BUTTERWORTH DS 1991. South African research on Antarctic whales. *S. Afr. J. Antarct. Res.* 21(2): 129
- BEST PB *see* Frost PGH & PB Best 1976. Design and application of a coded format for recording observations of cetaceans at sea. *S. Afr. J. Antarct. Res.* 6: 9-14
- BESTER MN 1979. A note on winter seal observations in the South Atlantic pack ice. *S. Afr. J. Antarct. Res.* 9: 27-28
- BESTER MN 1981. Fur seals *Arctocephalus gazella* and leopard seals *Hydrurga leptonyx* at the Courbet Peninsula, Kerguelen. *S. Afr. J. Antarct. Res.* 10/11: 35-37
- BESTER MN 1990. Population trends of Subantarctic fur seals and southern elephant seals at Gough Island. *S. Afr. J. Antarct. Res.* 20(1): 9-12
- BESTER MN & LENGART P-Y 1982. An analysis of the southern elephant seal *Mirounga leonina* breeding population at Kerguelen. *S. Afr. J. Antarct. Res.* 12: 11-16
- BESTER MN & ROUX J-P 1986. Summer presence of leopard seals *Hydrurga leptonyx* at the Courbet peninsula, Iles Kerguelen. *S. Afr. J. Antarct. Res.* 16(1): 29-32
- BESTER MN & ROUX J-P 1986. The second survey of Antarctic fur seals *Arctocephalus gazella* on the Courbet Peninsula, Iles Kerguelen. *S. Afr. J. Antarct. Res.* 16(1): 33-38
- BESTER MN & SKINNER JD 1991. South African research on Antarctic Seals. *S. Afr. J. Antarct. Res.* 21(2): 165-166
- BESTER MN & SKINNER JD 1991. The Marion Island cat programme. *S. Afr. J. Antarct. Res.* 21(2): 117.
- BESTER MN *see* Condry PR & MN Bester 1975. Notes on the tagging of seals at Marion and Gough Islands. *S. Afr. J. Antarct. Res.* 5: 45-47
- BESTER MN *see* Hofmeyr GJG & MN Bester 1993. Predation on king penguins by Antarctic fur seals. *S. Afr. J. Antarct. Res.* 23(1 & 2): 71-74
- BESTER MN *see* Jonker FC & MN Bester 1994. The diving behaviour of adult southern elephant seal, *Mirounga leonina*, cows from Marion Island. *S. Afr. J. Antarct. Res.* 24(1 & 2): 75-93
- BESTER MN *see* Wilkinson IS & MN Bester 1988. Is onshore human activity a factor in the decline of the southern elephant seal? *S. Afr. J. Antarct. Res.* 18(1): 14-17
- BESTER MN *see* Wilkinson IS & MN Bester 1990. Continued population increase in fur seals, *Arctocephalus tropicalis* and *A. gazella*, at the Prince Edward Islands. *S. Afr. J. Antarct. Res.* 20(2): 58-63
- BESTER MN *see* Skinner JD, PR Condry, RJ van Aarde, MN Bester & TJ Robinson 1978. The mammals of Marion Island: a review. *S. Afr. J. Antarct. Res.* 8: 35-38
- BODEKER GE & SCOURFIELD MWJ 1991. SANAE total column ozone: 1980 to 1990. *S. Afr. J. Antarct. Res.* 21(2): 220-221
- BODEN BP 1985. VIII. The plankton encountered during the survey. *S. Afr. J. Antarct. Res.* 15: 28-32
- BODEKER BP & REID FMH 1989. Marine plankton diatoms between Cape Town and the Prince Edward Islands (SW Indian Ocean). *S. Afr. J. Antarct. Res.* 19(2): 2-49
- BODEN BP *see* Allanson BR & BP Boden 1985. Preliminary results of the South African SIBEX I Cruise to the Prydz Bay region, Antarctica, 15 March - 3 May 1984: Overall Résumé. *S. Afr. J. Antarct. Res.* 15: 3-5
- BODEN GP *see* Perissinotto R & BP Boden 1989. Zooplankton-phytoplankton relationships at the Prince Edward Islands during April/May 1985 and 1986. *S. Afr. J. Antarct. Res.* 19(1): 26-30
- BODEN BP *see* Miller DGM, BP Boden & L Parker 1984. Hydrology and bio-oceanography of the Prince Edward Islands (south-west Indian Ocean). *S. Afr. J. Antarct. Res.* 14: 29-31
- BOVA P *see* Chevallier LWJ Verwoerd, P Bova, E Stettler, A du Plessis, JG du Plessis, LM Fernandez & M Nel 1992. Volcanological features and preliminary geophysical investigation on Marion Island. *S. Afr. J. Antarct. Res.* 22(1 & 2): 15-35
- BOWERS BG *see* Minnaar HFB, PJ König, PH Stoker & BG Bowers 1975. An electron precipitation event recorded at Sanae on 14 November 1974. *S. Afr. J. Antarct. Res.* 5: 13-15
- BRANCH ML 1994. The Polychaeta of subantarctic Marion and Prince Edward Islands: Illustrated keys to the species and results of the 1982-1989 University of Cape Town surveys. *S. Afr. J. Antarct. Res.* 24(1 & 2): 3-52
- BRANCH ML & WILLIAMS CG 1993. The Hydrozoa, Octocorallia and Scleractinia of subantarctic Marion and Prince Edward Islands: Illustrated keys to the species and results of the 1982-1989 University of Cape Town surveys. *S. Afr. J. Antarct. Res.* 23(1 & 2): 3-24
- BRANCH ML, ARNAUD PM, CANTERA J & GIANAKOURAS D 1991. The benthic Mollusca and Brachiopoda of subantarctic Marion and Prince Edward Islands: 1) Illustrated keys to the species, 2) Records of the 1982-1989 University of Cape Town Surveys. *S. Afr. J. Antarct. Res.* 21(1): 45-64
- BRANCH ML, GRIFFITHS CL, KENSLEY & SIEG J 1991. The benthic Crustacea of subantarctic Marion and Prince Edward Islands: Illustrated keys to the species and results of the 1982 - 1989 University of Cape Town Surveys. *S. Afr. J. Antarct. Res.* 21(1): 3-44
- BRANCH ML, JANGOUX M, ALVÁ V, MASSIN I & STAMPANATO S 1993. The Echinodermata of subantarctic Marion and Prince Edward Islands. *S. Afr. J. Antarct. Res.* 23(1 & 2): 37-70
- BRANCH ML *see* Arnaud F & ML Branch 1991. The Pycnogonida of subantarctic Marion and Prince Edward Islands: Illustrated keys to the species. *S. Afr. J. Antarct. Res.* 21(1): 65-71
- BREDELL JH 1973. Ten-metre snow studies at Grunehogna Base, western Dronning Maud Land. *S. Afr. J. Antarct. Res.* 3: 16-21
- BREDELL JH 1973. The geology of the Nashornet - Viddalskollen area, western Dronning Maud Land. *S. Afr. J. Antarct. Res.* 3: 2-10
- BROOKE M de L *see* Cooper J & M de L Brooke 1984. Breeding status of burrowing petrels at Prince

- Edward Island. *S. Afr. J. Antarct. Res.* 14: 34-35
- BROOKE RK & PRINS AJ 1986. Review of alien species on South African offshore islands. *S. Afr. J. Antarct. Res.* 16(3): 102-109
- BROWN CR & OATLEY TB 1982. Bird ringing at Marion and Prince Edward islands, 1977-1982. *S. Afr. J. Antarct. Res.* 12: 45-48
- BROWN CR, KLAGES NT & ADAMS NJ 1990. Short and medium-term variation in the diets of penguins at Marion Island. *S. Afr. J. Antarct. Res.* 20(1): 13-20
- BROWN CR *see* Cooper J & CR Brown 1990. Ornithological research at the sub-Antarctic Prince Edward Island: a review of achievements. *S. Afr. J. Antarct. Res.* 20(2): 40-57
- BRUNDRIT GB 1985. II. Temperature, salinity, and density overview. *S. Afr. J. Antarct. Res.* 15: 8-11
- BURGER AE 1978. Terrestrial invertebrates: a food resource for birds at Marion Island. *S. Afr. J. Antarct. Res.* 8: 87-99
- BURGER AE & MORANT PD 1977. Bird ringing on Marion Island, 1975-1977. *S. Afr. J. Antarct. Res.* 7: 26-27
- BURGER AE, LINDEBOOM HJ & WILLIAMS AJ 1978. Mineral and energy contributions of guano of selected species of birds to the Marion Island terrestrial ecosystem. *S. Afr. J. Antarct. Res.* 8: 59-70
- BURGER AE *see* Williams AJ, AE Burger & A Berruti 1978. Mineral and energy contributions of carcasses of selected species of seabirds to the Marion Island terrestrial ecosystem. *S. Afr. J. Antarct. Res.* 8: 53-59
- BURGER AE *see* Berruti A, AE Burger, AJ Williams & WR Siegfried 1975. Bird ringing on Marion Island. *S. Afr. J. Antarct. Res.* 5: 50-52
- BURGER AE *see* Siegfried WR, AJ Williams, AE Burger & A Berruti 1978. Mineral and energy contributions of eggs of selected species of seabirds to the Marion Island terrestrial ecosystem. *S. Afr. J. Antarct. Res.* 8: 75-87
- BURGER AE *see* Williams AJ, AE Burger, A Berruti & WR Siegfried 1975. Ornithological research on Marion Island, 1974-75. *S. Afr. J. Antarct. Res.* 5: 48-50
- BUTTERWORTH DS & MILLER DGM 1987. A note on relating Antarctic krill catch-per-unit-effort measures to abundance trends. *S. Afr. J. Antarct. Res.* 17(2): 112-116
- BUTTERWORTH DS *see* Best PB & DS Butterworth 1991. South African research on Antarctic whales. *S. Afr. J. Antarct. Res.* 21(2): 129
- CANTERA J *see* Branch ML, PM Arnaud, J Cantera & D Gianakouras 1991. The benthic Mollusca and Brachiopoda of subantarctic Marion and Prince Edward Islands: 1) Illustrated keys to the species, 2) Records of the 1982-1989 University of Cape Town Surveys. *S. Afr. J. Antarct. Res.* 21(1): 45-64
- CHERRY MJ 1985. VI. Preliminary report on the naturally-occurring radioactive nuclide ^{210}Po in the Southern Ocean food chain. *S. Afr. J. Antarct. Res.* 15: 23
- CHEVALLIER L, VERWOERD WJ, BOVÀ P, STETTLER E, DU PLESSIS A, DU PLESSIS JG, FERNANDEZ LM & NEL M 1992. Volcanological features and preliminary geophysical investigation on Marion Island. *S. Afr. J. Antarct. Res.* 22(1 & 2): 15-35
- CHOWN SL & AVENANT N 1992. Status of *Plutella xylostella* at Marion Island six years after its colonisation. *S. Afr. J. Antarct. Res.* 22(1 & 2): 37-40
- CHOWN SL & CRAFFORD J 1992. Microhabitat temperatures at Marion Island (46°54' S 37°45' E). *S. Afr. J. Antarct. Res.* 22: 51-58
- CHOWN SL *see* JE Crafford, C Scholtz & SL Chown 1986. The insects of sub-Antarctic Marion and Prince Edward Islands; with a bibliography of entomology of the Kerguelen biogeographical province. *S. Afr. J. Antarct. Res.* 16(2): 42-84
- COCKROFT VG, PEDDEMORS VM, RYAN PG & LUTJEHARMS JRE 1990. Cetacean sightings in the Agulhas Retroflexion, Agulhas Rings and Subtropical Convergence. *S. Afr. J. Antarct. Res.* 20(2): 64-69
- CONDY PR 1976. Results of the Third Seal Survey in the King Haakon VII Sea, Antarctica. *S. Afr. J. Antarct. Res.* 6: 2-8
- CONDY PR 1977. Results of the fourth seal survey in the King Haakon VII Sea, Antarctica. *S. Afr. J. Antarct. Res.* 7: 10-13
- CONDY PR 1977. Whale observations in the pack ice off the Fimbul Ice Shelf, Antarctica. *S. Afr. J. Antarct. Res.* 7: 7-9
- CONDY PR 1978. The distribution and abundance of southern elephant seals *Mirounga leonina* (Linn.) on the Prince Edward islands. *S. Afr. J. Antarct. Res.* 8: 42-48
- CONDY PR 1979. Observations on penguins in the King Haakon VII Sea, Antarctica. *S. Afr. J. Antarct. Res.* 9: 29-32
- CONDY PR & BESTER MN 1975. Notes on the tagging of seals at Marion and Gough Islands. *S. Afr. J. Antarct. Res.* 5: 45-47
- CONDY PR *see* Anderson GD & PR Condy 1974. A note on the feral house cat and house mouse on Marion Island. *S. Afr. J. Antarct. Res.* 4: 58-60
- CONDY PR *see* Siegfried WR, PF Forbes & PR Condy 1979. Scientific research at the Prince Edward islands, 1847-1979: a bibliography. *S. Afr. J. Antarct. Res.* 9: 35-41
- CONDY PR *see* Skinner JD, PR Condy, RJ van Aarde, MN Bester & TJ Robinson 1978. The mammals of Marion Island: a review. *S. Afr. J. Antarct. Res.* 8: 35-38
- CONROY JWH *see* Johnstone GW, PD Shaughnessy & JWH Conroy 1976. Giant-petrels in the South Atlantic: new data from Gough Island. *S. Afr. J. Antarct. Res.* 6: 19-22
- COOPER J 1976. Season and spatial distribution of the Antarctic Tern in South Africa. *S. Afr. J. Antarct. Res.* 6: 30-32
- COOPER J 1983. Bird ringing at Gough Island, 1977-1982. *S. Afr. J. Antarct. Res.* 13: 47-48
- COOPER J 1985. XI. Distribution and abundance of birds at sea. *S. Afr. J. Antarct. Res.* 15: 53-55
- COOPER J 1988. Bird ringing at Gough Island, 1982-1987; with an analysis of movements of wandering albatrosses. *S. Afr. J. Antarct. Res.* 18(1): 21-22
- COOPER J & BROOKE MdL 1984. Breeding status of burrowing petrels at Prince Edward Island. *S. Afr. J. Antarct. Res.* 14: 34-35
- COOPER J & BROWN CR 1990. Ornithological research at the sub-Antarctic Prince Edward Island: a review of achievements. *S. Afr. J. Antarct. Res.* 20(2): 40-57
- COOPER J & FRASER MW 1986. Bird ringing at the Tristan da Cunha islands, 1982-1985. *S. Afr. J. Antarct. Res.* 16(1): 38-40
- COOPER J & HEADLAND RK 1991. A history of South African involvement in Antarctica and at the Prince Edward Islands. *S. Afr. J. Antarct. Res.* 21(2): 77-91
- COOPER J, AVENANT NL & VAN WYK JCP 1994. Observations of the shortsnout lancetfish *Alepisaurus brevirostris* at sub-Antarctic Marion Island. *S. Afr. J. Antarct. Res.* 24(1 & 2): 126
- COOPER J, VAN WYK JCP & MATTHEWSON DC 1994. Effects of small-mammal trapping on birds at sub-Antarctic Marion Island. *S. Afr. J. Antarct. Res.* 24(1 & 2): 125
- COOPER J, ENTICOTT JW, HECHT T & KLAGES N 1984. Prey from three chinstrap penguins *Pygoscelis antarctica* at Bouvet Island, December 1982. *S. Afr. J. Antarct. Res.* 14: 32-33
- COOPER J *see* Watkins BP & J Cooper 1983. Scientific research at Gough Island, 1869-1982: a bibliography. *S. Afr. J. Antarct. Res.* 13: 54-58
- COOPER J *see* Watkins BP & J Cooper 1986. Introduction, present status and control of alien species at the Prince Edward islands, sub-Antarctic. *S. Afr. J. Antarct. Res.* 16(3): 86-94
- COOPER J *see* Gartshore NA, J Cooper & S Hunter 1988. Bird ringing at Marion and Price (sic) Edward Islands, 1982-1987; with an analysis of movements since 1951. *S. Afr. J. Antarct. Res.* 18(1): 23-29
- COOPER J *see* Watkins BP, J Cooper & IP Newton 1984. Research into the natural sciences at the Tristan da Cunha islands, 1719-1983: a bibliography. *S. Afr. J. Antarct. Res.* 14: 40-47
- COOPER J *see* Watkins BP, J Cooper & IP Newton 1984. Scientific research at Bouvet Island, 1785-1983: a bibliography. *S. Afr. J. Antarct. Res.* 14: 36-39
- COOPER J *see* Newton IP, J Cooper, R Lund, F Mehlum & G Thor 1994. A bibliography of terrestrial biological research in Dronning Maud Land, Antarctica. *S. Afr. J. Antarct. Res.* 24(1 & 2): 111-124
- CORNER B & GROENEWALD PB 1991. Gondwana reunited. *S. Afr. J. Antarct. Res.* 21(2): 172
- CORNER B *see* Hunter DR, B Corner, JR Krynauw, A le Roex, GH Grantham, PB Groenewald, AB Moyes, HW Bergh & C Harris 1991. A recent history of South African earth science research in Antarctica and adjacent regions. *S. Afr. J. Antarct. Res.* 21(2): 173-183
- CRAFFORD JE 1984. Life-cycle and kelp consumption of *Paractora dreuxi mirabilis* (Diptera: Helcomyzidae): A primary decomposer of stranded kelp on Marion Island. *S. Afr. J. Antarct. Res.* 14: 18-22
- CRAFFORD JE 1986. A case study of an alien invertebrate (*Limnophyes pusillus*, Diptera, Chironomidae) introduced on Marion Island: Selective advantages. *S. Afr. J. Antarct. Res.* 16(3): 115-117
- CRAFFORD JE, SCHOLTZ CH & CHOWN SL 1986. The insects of sub-Antarctic Marion and Prince Edward Islands; with a bibliography of entomology of the Kerguelen biogeographical province. *S. Afr. J. Antarct. Res.* 16(2): 42-84
- CRAFFORD JE *see* Chown SL & JE Crafford 1992. Microhabitat temperatures at Marion Island (46°54' S 37°45' E). *S. Afr. J. Antarct. Res.* 22(1 & 2): 51-58
- CRAFFORD JE *see* Marshall DJ, JE Crafford, JR Krynauw, AE Drummond & IP Newton 1995. The biology, physico-chemistry and geology of a nunatak pond at Valterkulen, western Dronning Maud Land, Antarctica. *S. Afr. J. Antarct. Res.* 24: 9-16
- CRAMD L & MALAN OG 1977. On the possibility of surveying krill (*Euphausia dana*) in the Southern Ocean by remote sensing. *S. Afr. J. Antarct. Res.* 7: 14-19
- CRAM DL, AGENBAG JJ, HAMPTON I & ROBERTSON AA 1979. SAS *Protea* Cruise, 1978. The general results of the acoustics and remote sensing study, with recommendations for estimating the abundance of krill (*Euphausia superba* Dana). *S. Afr. J. Antarct. Res.* 9: 3-14
- CROOME RL 1973. Nitrogen fixation in the algal mires on Marion Island. *S. Afr. J. Antarct. Res.* 3: 64-67
- DASTYCH H *see* Steele WK, DA Balfour, JM Harris, H Dastych, J Heyns & A Eicker 1994. Preliminary biological survey of Vesleskarvet, northern Ahlmannryggen, western Dronning Maud Land: site of South Africa's new Antarctic base (sic). *S. Afr. J. Antarct. Res.* 24(1 & 2): 57-65
- DASTYCH H *see* Ryan PG, BP Watkins, RI Lewis Smith, H Dastych, A Eicker, W Foissner, H Heatwole, WR Miller & G Thompson 1989. Biological survey of Robertskollen, western Dronning Maud Land: area description and preliminary species lists. *S. Afr. J. Antarct. Res.* 19(1): 10-20
- DEANE KF *see* Walker ADM & KF Deane 1974. Methods of scaling whistlers in the absence of the initi-

- ating spheric and nose frequency. *S. Afr. J. Antarct. Res.* 4: 27-30
- DE VILLIERS AF 1976. Littoral ecology of Marion and Prince Edward Islands (Southern Ocean). *S. Afr. J. Antarct. Res.* Supplement 1: 1-40
- DE WET PB *see* Van Schalkwyk DJ 1991. 'n Oorsig oor Suid-Afrika se Antarktiese en sub-Antarktiese betrokkenheid. *S. Afr. J. Antarct. Res.* 21(2): 144-146
- DRENNAN PM *see* Smith VR, NM Pammenter & PM Drennan 1986. A case study of an alien vascular plant (*Agrostis stolonifera*) introduced on Marion Island. *S. Afr. J. Antarct. Res.* 16(3): 128
- DRUMMOND AE *see* Marshall DJ, JE Crafford, JR Krynauw, AE Drummond & IP Newton 1995. The biology, physico-chemistry and geology of a nunatak pond at Valterkulten, western Dronning Maud Land, Antarctica. *S. Afr. J. Antarct. Res.* 25: 9-16
- DUNCOMBE-RAE 1985. V. Nutrient analysis. *S. Afr. J. Antarct. Res.* 15: 20-22
- DUNCOMBE-RAE CM 1989. Frontal systems encountered between southern Africa and the Prince Edward Islands during April/May 1987. *S. Afr. J. Antarct. Res.* 19(1): 21-25
- DU PLESSIS A 1973. Temperature profiles obtained from boreholes on the ice shelf in the vicinity of Sanae, western Dronning Maud Land. *S. Afr. J. Antarct. Res.* 3: 11-15
- DU PLESSIS A *see* Chevallier L, WJ Verwoerd, P Bova, E Stettler, JG du Plessis, A du Plessis, LM Fernandez & M Nel 1992. Volcanological features and preliminary geophysical investigation on Marion Island. *S. Afr. J. Antarct. Res.* 22(1 & 2): 15-35
- EICKER A *see* Steele WK, DA Balfour, JM Harris, H Dastych, J Heyns & A Eicker 1994. Preliminary biological survey of Vesleskarvet, northern Ahlmannryggen, western Dronning Maud Land: site of South Africa's new Antarctic base (sic). *S. Afr. J. Antarct. Res.* 24(1 & 2): 57-65
- EICKER A *see* Ryan PG, BP Watkins, RI Lewis Smith, H Dastych, A Eicker, W Foissner, H Heatwole, WR Miller & G Thompson 1989. Biological survey of Roberts-kollen, western Dronning Maud Land: area description and preliminary species lists. *S. Afr. J. Antarct. Res.* 19(1): 10-20
- EMERY WJ *see* Lutjeharms JRE & WJ Emery 1983. The detailed thermal structure of the upper ocean layers between Cape Town and Antarctica during the period Jan.-Feb. 1978. *S. Afr. J. Antarct. Res.* 13: 3-14
- ENTICOTT JW *see* Cooper J, JW Enticott, T Hecht & N Klages 1984. Prey from three chinstrap penguins *Pygoscelis antarctica* at Bouvet Island, December 1982. *S. Afr. J. Antarct. Res.* 14: 32-33
- ENTICOTT JW 1986. Associations between seabirds and cetaceans in the African sector of the Southern Ocean. *S. Afr. J. Antarct. Res.* 16(1): 25-28
- ERASMUS JM *see* Gavshon RDJ & JM Erasmus 1975. Precambrian metamorphic rocks of the Neumayerskarvet area, Kirwanveggen, western Dronning Maud Land. *S. Afr. J. Antarct. Res.* 5: 2-9
- FAIRALL N *see* Shaughnessy PD & N Fairall 1976. Notes on seabirds at Gough Island. *S. Afr. J. Antarct. Res.* 6: 23-25
- FERNANDEZ LM *see* Chevallier L, WJ Verwoerd, P Bova, E Stettler, A du Plessis, JG du Plessis, LM Fernandez & M Nel 1992. Volcanological features and preliminary geophysical investigation on Marion Island. *S. Afr. J. Antarct. Res.* 22(1 & 2): 15-35
- FOISSNER W *see* Ryan PG, BP Watkins, RI Lewis Smith, H Dastych, A Eicker, W Foissner, H Heatwole, WR Miller & G Thompson 1989. Biological survey of Roberts-kollen, western Dronning Maud Land: area description and preliminary species lists. *S. Afr. J. Antarct. Res.* 19(1): 10-20
- FOLDVIK A *see* Lutjeharms JRE & A Foldvik 1986. The thermal structure of the upper ocean layers between Africa and Antarctica during the period December 1978 to March 1979. *S. Afr. J. Antarct. Res.* 16(1): 13-20
- FORBES PF *see* Siegfried WR, PF Forbes & PR Condy 1979. Scientific research at the Prince Edward islands, 1847-1979: a bibliography. *S. Afr. J. Antarct. Res.* 9: 35-41
- FRASER MW *see* Cooper J & MW Fraser 1986. Bird ringing at the Tristan da Cunha islands, 1982-1985. *S. Afr. J. Antarct. Res.* 16(1): 38-40
- FRENCH DD & SMITH VR 1983. A note on the feeding of *Pringleophaga marioni* Vietti larvae at Marion Island. *S. Afr. J. Antarct. Res.* 13: 45-46
- FRIEDEL RHW & HUGHES ARW 1991. An OMSKI for SANAE. *S. Afr. J. Antarct. Res.* 21(2): 184
- FROST PGH 1979. Seabird distribution and the transport of nutrients from marine to terrestrial ecosystems. *S. Afr. J. Antarct. Res.* 9: 20-27
- FROST PGH & BEST PB 1976. Design and application of a coded format for recording observations of cetaceans at sea. *S. Afr. J. Antarct. Res.* 6: 9-14
- FROST PGH, GRINDLEY JR & WOOLDRIDGE TH 1976. Report on South Africa (sic) participation in cruise MD08 of M S *Marion Dufresne*, March-April 1976. *S. Afr. J. Antarct. Res.* 6: 28-29
- GARTSHORE NA, COOPER J & HUNTER S 1988. Bird ringing at Marion and Price (sic) Edward Islands, 1982-1987; with an analysis of movements since 1951. *S. Afr. J. Antarct. Res.* 18(1): 23-29
- GAVSHON RDJ & ERASMUS JM 1975. Precambrian metamorphic rocks of the Neumayerskarvet area, Kirwanveggen, western Dronning Maud Land. *S. Afr. J. Antarct. Res.* 5: 2-9
- GERDES D *see* Klages NTW & D Gerdes 1988. A little known colony of Emperor penguins on the coast of the eastern Weddell Sea. *S. Afr. J. Antarct. Res.* 18(1): 18-20
- GIANAKOURAS D *see* Branch ML, PM Arnaud, J Cantera & D Gianakouras 1991. The benthic Mollusca and Brachiopoda of subantarctic Marion and Prince Edward Islands: 1) Illustrated keys to the species, 2) Records of the 1982-1989 University of Cape Town Surveys. *S. Afr. J. Antarct. Res.* 21(1): 45-64
- GLEDHILL JA 1971. Scientific results of the South African Antarctic Ionosphere programme 1962-1970. *S. Afr. J. Antarct. Res.* 1: 3-10
- GLEDHILL JA 1973. Horizontal heat conduction during electron precipitation into the upper atmosphere. *S. Afr. J. Antarct. Res.* 3: 33-37
- GLEDHILL JA 1975. The International Magnetospheric Study (IMS) and the Antarctic and Southern Hemisphere Aeronomy Year (ASHAY). *S. Afr. J. Antarct. Res.* 5: 53-56
- GLEDHILL JA *see* Greener JG & JA Gledhill 1972. Electron fluxes observed near Sanae, Antarctica, by the satellite Alouette I during 1962-3. *S. Afr. J. Antarct. Res.* 2: 35-39
- GLEDHILL JA *see* Haggard R & JA Gledhill 1976. Observations of the ionosphere over the South Atlantic Ocean. *S. Afr. J. Antarct. Res.* 6: 14-18
- GLEDHILL JA *see* Haschick AD & JA Gledhill 1974. Ionization of the E region of the ionosphere by precipitated electrons. *S. Afr. J. Antarct. Res.* 4: 16-22
- GLEESON JP & VAN RENSBURG PJJ 1982. Feeding ecology of the house mouse *Mus musculus* on Marion Island. *S. Afr. J. Antarct. Res.* 12: 34-39
- GON O 1988. The fishes collected during the South African SIBEX I + II expeditions to the Indian sector of the Southern Ocean (60-66°S, 48-64°E). *S. Afr. J. Antarct. Res.* 18(2): 55-70
- GON O 1991. A concise review of Antarctic fish research in South Africa. *S. Afr. J. Antarct. Res.* 21(2): 124
- GON O & KLAGES NTW 1988. The marine fish fauna of the sub-Antarctic Prince Edward Islands. *S. Afr. J. Antarct. Res.* 18(2): 32-54
- GON O & MOSTERT D 1992. Aspects of the ecology of two nototheniid fish species in the inshore zone of the sub-Antarctic Marion Island. *S. Afr. J. Antarct. Res.* 22(1 & 2): 59-67
- GON O, HENDRY DA & MOSTERT D 1994. Glycoprotein antifreeze in *Notothenia coriiceps* (Pisces: Nototheniidae) from the sub-Antarctic Marion Island. *S. Afr. J. Antarct. Res.* 24(1 & 2): 53-56
- GRANTHAM GH, GROENEWALD PB & HUNTER DR 1988. Geology of the northern H U Sverdrupfjella, western Dronning Maud Land and implications for Gondwana reconstructions. *S. Afr. J. Antarct. Res.* 18(1): 2-10
- GRANTHAM GH *see* Hunter DR, B Corner, JR Krynauw, A le Roex, GH Grantham, GPB Groenewald, AB Moyes, HW Bergh & C Harris 1991. A recent history of South African earth science research in Ant-
- arctica and adjacent regions. *S. Afr. J. Antarct. Res.* 21(2): 173-183
- GREENER JG & GLEDHILL JA 1972. Electron fluxes observed near Sanae, Antarctica, by the satellite Alouette I during 1962-3. *S. Afr. J. Antarct. Res.* 2: 35-39
- GREMME NJM 1975. The distribution of alien vascular plants on Marion and Prince Edward Islands. *S. Afr. J. Antarct. Res.* 5: 25-30
- GREMME NJM & SMITH VR 1981. *Agrostis stolonifera* L. on Marion Island (sub-Antarctic). *S. Afr. J. Antarct. Res.* 10/11: 33-34
- GREMME NJM & VAN MEIJDEN R 1995. Introduced *Agrostis* species at sub-antarctic Marion Island. *S. Afr. J. Antarct. Res.* 25: 85-86
- GRIBNITZ K-H & KENT LE 1989. Marine and fluvial terraces and colluvial fans reflecting quaternary climatic changes, Gough Island, South Atlantic. *S. Afr. J. Antarct. Res.* 19(1): 2-9
- GRIBNITZ K-H *see* Kent LE & K-H Gribnitz 1983. Problematical Quaternary successions on Marion Island: volcanogenic or glacial? *S. Afr. J. Antarct. Res.* 13: 15-23
- GRIFFITHS CL *see* Branch ML, CL Griffiths, B Kensley & J Sieg 1991. The benthic Crustacea of subantarctic Marion and Prince Edward Islands: Illustrated keys to the species and results of the 1982 - 1989 University of Cape Town Surveys. *S. Afr. J. Antarct. Res.* 21(1): 3-44
- GRIFFITHS AM *see* Berruti A, AM Griffiths, MJ Imber, M Schramm & JS Sinclair 1981. The status of seabirds at Prince Edward Island. *S. Afr. J. Antarct. Res.* 10/11: 31-32
- GRINDLEY JR 1978. Marine ecosystems of Marion Island. *S. Afr. J. Antarct. Res.* 8: 38-42
- GRINDLEY JR *see* Frost PGH, JR Grindley & TH Wooldridge 1976. Report on South Africa (sic) participation in cruise MD08 of M S *Marion Dufresne*, March-April 1976. *S. Afr. J. Antarct. Res.* 6: 28-29
- GROBBELAAR JU 1974. Primary production in freshwater bodies of the Sub-Antarctic Island Marion. *S. Afr. J. Antarct. Res.* 4: 40-45
- GROBBELAAR JU 1978. The limnology of Marion Island: Southern Indian Ocean. *S. Afr. J. Antarct. Res.* 8: 113-118
- GROENEWALD PG *see* Corner B & PG Groenewald 1991. Gondwana reunited. *S. Afr. J. Antarct. Res.* 21(2): 172
- GROENEWALD PB *see* Grantham GH, PB Groenewald & DR Hunter 1988. Geology of the northern H U Sverdrupfjella, western Dronning Maud Land and implications for Gondwana reconstructions. *S. Afr. J. Antarct. Res.* 18(1): 2-10
- GROENEWALD PG *see* Hunter DR, B Corner, JR Krynauw, A le Roex, GH Grantham, PG Groenewald, AB Moyes, HW Bergh & C Harris 1991. A recent history of South African earth science research in Ant-

- arctica and adjacent regions. *S. Afr. J. Antarct. Res.* 21(2): 173-183
- GRÜNDLINGH ML 1994. Surface wave conditions at Marion Island. *S. Afr. J. Antarct. Res.* 24(1 & 2): 95-101
- HAGGARD R & GLEDHILL JA 1976. Observations of the ionosphere over the South Atlantic Ocean. *S. Afr. J. Antarct. Res.* 6: 14-18
- HALL K 1977. Some observations on the former sea levels of Marion Island. *S. Afr. J. Antarct. Res.* 7: 19-22
- HALL K 1983. Observations of some periglacial features and their palaeoenvironmental implications on sub-Antarctic islands Marion and Kerguelen. *S. Afr. J. Antarct. Res.* 13: 35-40
- HALL KJ & WILLIAMS AJ 1981. Animals as agents of erosion at sub-Antarctic Marion Island. *S. Afr. J. Antarct. Res.* 10/11: 18-24
- HALL-MARTIN AJ 1974. Observations on population density and species composition of seals in the King Haakon VII Sea, Antarctica. *S. Afr. J. Antarct. Res.* 4: 34-39
- HAMPTON I *see* Cram DL, JJ Agenbag, I Hampton & AA Robertson 1979. SAS *Protea* Cruise, 1978. The general results of the acoustics and remote sensing study, with recommendations for estimating the abundance of krill (*Euphasia superba* Dana). *S. Afr. J. Antarct. Res.* 9: 3-14
- HARALDSEN L *see* Orren MJ, PMS Monteiro & L Haraldsen 1985. IV. Silica, dissolved oxygen, and trace metals. *S. Afr. J. Antarct. Res.* 15: 19
- HARCUS T *see* Berruti A & T HARCUS 1978. Cephalopod prey of the sooty albatrosses *Phoebastria fusca* and *P. palpebrata* at Marion Island. *S. Afr. J. Antarct. Res.* 8: 99-103
- HARRIS C & WATKINS RT 1989. Seal carcass at Tvora (0°5'W, 72°12'S), western Dronning Maud Land, Antarctica. *S. Afr. J. Antarct. Res.* 19(1): 34-35
- HARRIS JM *see* Steele WK, DA Balfour, JM Harris, H Dastych, J Heyns & A Eicker 1994. Preliminary biological survey of Vesleskarvet, northern Ahlmannryggen, western Dronning Maud Land: site of South Africa's new Antarctic base (sic). *S. Afr. J. Antarct. Res.* 24(1 & 2): 57-65
- HARRIS C *see* Hunter DR, B Corner, JR Krynauw, A le Roex, GH Grantham, PB Groenewald, AB Moyes, HW Bergh & C Harris 1991. A recent history of South African earth science research in Antarctica and adjacent regions. *S. Afr. J. Antarct. Res.* 21(2): 173-183
- HART RC *see* Allanson BR, RC Hart & JRE Lutjeharms 1981. Observations on the nutrients, chlorophyll and primary production of the Southern Ocean south of Africa. *S. Afr. J. Antarct. Res.* 10/11: 3-14
- HASCHICK AD & GLEDHILL JA 1974. Ionization of the E region of the ionosphere by precipitated electrons. *S. Afr. J. Antarct. Res.* 4: 16-22
- HEADLAND RK *see* Cooper J & RK Headland 1991. A history of South African involvement in Antarctica and at the Prince Edward Islands. *S. Afr. J. Antarct. Res.* 21(2): 77-91
- HEARSHAW KD *see* Attwood CG & KD Hearshaw 1992. Lipid content and composition of sub-Antarctic euphausiids and copepods from the Prince Edward Islands. *S. Afr. J. Antarct. Res.* 22(1 & 2): 3-13
- HEATWOLE H *see* Ryan PG, BP Watkins, RI Lewis Smith, H Dastych, A Eicker, W Foissner, H Heatwole, WR Miller & G Thompson 1989. Biological survey of Roberts-kollen, western Dronning Maud Land: area description and preliminary species lists. *S. Afr. J. Antarct. Res.* 19(1): 10-20
- HECHT T 1987. A guide to the otoliths of Southern Ocean fishes. *S. Afr. J. Antarct. Res.* 17(1): 2-87
- HECHT T *see* Andrew TG & T Hecht 1992. Feeding biology of *Acantholatris monodactylus* (Pisces: cheilodactylidae) at Tristan da Cunha and Gough Island, South Atlantic. *S. Afr. J. Antarct. Res.* 22(1 & 2): 41-49
- HECHT T *see* Cooper J, JW Enticott, T Hecht & N Klages 1984. Prey from three chinstrap penguins *Pygoscelis antarctica* at Bouvet Island, December 1982. *S. Afr. J. Antarct. Res.* 14: 32-33
- HENDRY DA *see* Gon O, DA Hendry & D Mostert 1994. Glycoprotein antifreeze in *Notothenia coriiceps* (Pisces: Nototheniidae) from the sub-Antarctic Marion Island. *S. Afr. J. Antarct. Res.* 24(1 & 2): 53-56
- HES AD & ROUX J-P 1983. Population increase in the sub-Antarctic fur seal *Arctocephalus tropicalis* at Amsterdam Island. *S. Afr. J. Antarct. Res.* 13: 29-34
- HEYNS J 1993. *Eudorylaimus nudicaudatus* sp.n. from Antarctica (Nematoda: Dorylaimoidea). *S. Afr. J. Antarct. Res.* 23(1 & 2): 33-36
- HEYNS J *see* Steele WK, DA Balfour, JM Harris, H Dastych, J Heyns & A Eicker 1994. Preliminary biological survey of Vesleskarvet, northern Ahlmannryggen, western Dronning Maud Land: site of South Africa's new Antarctic base (sic). *S. Afr. J. Antarct. Res.* 24(1 & 2): 57-65
- HILLER N 1994. The biogeographic relationships of the brachiopod fauna from Marion and Prince Edward Islands. *S. Afr. J. Antarct. Res.* 24(1 & 2): 67-74
- HILMER T *see* Smith VR & T Hilmer 1984. Bacterial numbers in the freshwater bodies of a sub-Antarctic island. *S. Afr. J. Antarct. Res.* 14: 23-26
- HOFMEYR GJG & BESTER MN 1993. Predation on king penguins by Antarctic fur seals. *S. Afr. J. Antarct. Res.* 23(1 & 2): 71-74
- HOUGH G & MWJ Scourfield 1991. WAND auroral imager for SANAE. *S. Afr. J. Antarct. Res.* 21(2): 113
- HUGHES ARW 1975. Diurnal variation of ELF and VLF noise observed on a low-altitude satellite at the invariant latitude of Sanae. *S. Afr. J. Antarct. Res.* 5: 10-12
- HUGHES ARW & FRIEDEL RHW 1991. An OMSKI for SANAE. *S. Afr. J. Antarct. Res.* 21(2): 184
- HUGHES ARW & SCOURFIELD MWJ 1991. SANAE: The Durban Connection. *S. Afr. J. Antarct. Res.* 21(2): 187-192
- HUNTER DR, CORNER B, KRYNAUW JR, LE ROEX A, GRANTHAM GH, GROENEWALD PB, MOYES AB, BERGH HW AND HARRIS C 1991. A recent history of South African earth science research in Antarctica and adjacent regions. *S. Afr. J. Antarct. Res.* 21(2): 173-183
- HUNTER DR *see* GRANTHAM GH, PB GROENEWALD & DR HUNTER 1988. Geology of the northern H U Sverdrupfjella, western Dronning Maud Land and implications for Gondwana reconstructions. *S. Afr. J. Antarct. Res.* 18(1): 2-10
- HUNTER DR *see* Krynauw JR, DR Hunter & AH Wilson 1984. A note on the layered intrusions at Annandagstoppane and Juletoppane, Western Dronning Maud Land. *S. Afr. J. Antarct. Res.* 14: 2-10
- HUNTER DR *see* Krynauw JR, DR Hunter & AH Wilson 1990. A reassessment of the Nils Jörgennutane suite in the Ahlmannryggen. *S. Afr. J. Antarct. Res.* 20(1): 2-8
- HUNTER IT 1991. South African meteorological research in Antarctica. *S. Afr. J. Antarct. Res.* 21(2): 97
- HUNTER S & KLAGES NTW 1989. The diet of grey-headed albatrosses *Diomedea chrysostoma* at the Prince Edward Islands. *S. Afr. J. Antarct. Res.* 19(1): 31-33
- HUNTER S *see* Gartshore NA, J Cooper & Hunter 1988. Bird ringing at Marion and Prince Edward Islands, 1982-1987; with an analysis of movements since 1951. *S. Afr. J. Antarct. Res.* 18(1): 23-29
- IMBER MJ *see* Berruti A, AM Griffiths, MJ Imber, M Schramm & JC Sinclair 1981. The status of seabirds at Prince Edward Island. *S. Afr. J. Antarct. Res.* 10/11: 31-32
- IMBER MJ *see* Williams AJ & MJ Imber 1982. Ornithological observations at Gough Island in 1979, 1980 and 1981. *S. Afr. J. Antarct. Res.* 12: 40-45
- ISMAIL HE 1990. Surface nutrients in the vicinity of the Prince Edward Islands during April/May 1989. *S. Afr. J. Antarct. Res.* 20(1): 33-36
- JANGOUX M *see* Branch ML, M Jangoux, V Alvá, CI Massin & S Stampanato 1993. The Echinodermata of subantarctic Marion and Prince Edward Islands. *S. Afr. J. Antarct. Res.* 23(1 & 2): 37-70
- JOHNSTONE GW, SHAUGHNESSY PD & CONROY JWH 1976. Giant-petrels in the South Atlantic: new data from Gough Island. *S. Afr. J. Antarct. Res.* 6: 19-22
- JONKER FC & BESTER MN 1994. The diving behaviour of adult southern elephant seal, *Mirounga leonina*, cows from Marion Island. *S. Afr. J. Antarct. Res.* 24(1 & 2): 75-93
- KENSLEY B *see* Branch ML, CL Griffiths, B Kensley & J Sieg 1991. The benthic Crustacea of subantarctic Marion and Prince Edward Islands: Illustrated keys to the species and results of the 1982 - 1989 University of Cape Town Surveys. *S. Afr. J. Antarct. Res.* 21(1): 3-44
- KENT LE & GRIBNITZ K-H 1983. Problematical Quaternary successions on Marion Island: volcanogenic or glacial? *S. Afr. J. Antarct. Res.* 13: 15-23
- KENT LE *see* Gribnitz K-H & LE Kent 1989. Marine and fluvial terraces and colluvial fans reflecting quaternary climatic changes, Gough Island, South Atlantic. *S. Afr. J. Antarct. Res.* 19(1): 2-9
- KENT LE *see* Wolmarans LG & LE Kent 1982. Geological investigations in Western Dronning Maud Land, Antarctica - a synthesis. *S. Afr. J. Antarct. Res.* Supplement 2: 4-93, plates
- KLAGES NTW & GERDES D 1988. A little known colony of Emperor penguins on the coast of the eastern Weddell Sea. *S. Afr. J. Antarct. Res.* 18(1): 18-20
- KLAGES NTW *see* Gon O & NTW Klages 1988. The marine fish fauna of the sub-Antarctic Prince Edward Islands. *S. Afr. J. Antarct. Res.* 18(2): 32-54
- KLAGES NTW *see* Hunter S & NTW Klages 1989. The diet of grey-headed albatrosses *Diomedea chrysostoma* at the Prince Edward Islands. *S. Afr. J. Antarct. Res.* 19(1): 31-33
- KLAGES NT *see* Brown CR, NT Klages & NJ Adams 1990. Short and medium-term variation in the diets of penguins at Marion Island. *S. Afr. J. Antarct. Res.* 20(1): 13-20
- KLAGES N *see* Cooper J, JW Enticott, T Hecht & N Klages 1984. Prey from three chinstrap penguins *Pygoscelis antarctica* at Bouvet Island, December 1982. *S. Afr. J. Antarct. Res.* 14: 32-33
- KNIGHT MH *see* Panagis K, P Apps & MH Knight 1982. Seal Finger: occurrence in Antarctica. *S. Afr. J. Antarct. Res.* 12: 49
- KOK OB 1977. Lentic water types of Marion and Prince Edward Islands with comments on their zooplankton. *S. Afr. J. Antarct. Res.* 7: 2-7
- KÖNIG PJ *see* Minnaar HFB, PJ König, PH Stoker & BG Bowers 1975. An electron precipitation event recorded at Sanae on 14 November 1974. *S. Afr. J. Antarct. Res.* 5: 13-15
- KRIEL JN, MISCHKE CFW & STOKER PH 1973. The effect of the rising snow level on the counting rate of the Sanae neutron monitor. *S. Afr. J. Antarct. Res.* 3: 42-44
- KRÜGER M *see* Loots JM & M Krüger 1971. Studies of clothing and thermal comfort in Antarctica. *S. Afr. J. Antarct. Res.* 1: 11-15
- KRYNAUW JR 1989. The discovery and significance of sedimentary rocks at Förstefjell, Gaeverryggen. *S. Afr. J. Antarct. Res.* 19(1): 36-39
- KRYNAUW JR, HUNTER DR & WILSON AH 1984.

- A note on the layered intrusions at Annandagstoppane and Juletoppane, Western Dronning Maud Land. *S. Afr. J. Antarct. Res.* 14: 2-10
- KRYNAUW JR, HUNTER DR & WILSON AH 1990. A reassessment of the Nils Jörgennutane suite in the Ahlmannryggen. *S. Afr. J. Antarct. Res.* 20(1): 2-8
- KRYNAUW JR, ALLEN AR, AURET SH & VON BRUNN V 1983. A note on breeding sites of snow petrels (*Pagodroma nivea*) at Robertskollen, Boreas and Passat nunataks and Johnsbrotet, western Dronning Maud Land, Antarctica. *S. Afr. J. Antarct. Res.* 13: 51-53
- KRYNAUW JR see Marshall DJ, JE Crafford, JR Krynauw, AE Drummond & IP Newton 1995. The biology, physico-chemistry and geology of a nunatak pond at Valterkulen, western Dronning Maud Land, Antarctica. *S. Afr. J. Antarct. Res.* 25: 9-16
- KRYNAUW JR see Hunter DR, B Corner, JR Krynauw, A le Roex, GH Grantham, PB Groenewald, AB Moyes, HW Bergh & C Harris 1991. A recent history of South African earth science research in Antarctica and adjacent regions. *S. Afr. J. Antarct. Res.* 21(2): 173-183
- KÜHN GJ 1971. A relationship between riometer absorption events at different latitudes near the auroral oval. *S. Afr. J. Antarct. Res.* 1: 22-23
- Kühn GJ 1974. Observations of auroral pulsations at Sanae. *S. Afr. J. Antarct. Res.* 4: 46-49
- KÜHN GJ & SUTCLIFFE PR 1972. Evidence of a phase reversal in the quiet day variation of the magnetic vertical intensity at Marion Island. *S. Afr. J. Antarct. Res.* 2: 45-48
- KÜHN GJ & SUTCLIFFE PR 1973. Some aspects of Sq at Sanae. *S. Afr. J. Antarct. Res.* 3: 26-32
- LA GRANGE JJ 1991. The Beginning: 1. Taking part in the Trans-Antarctic Expedition. *S. Afr. J. Antarct. Res.* 21(2): 92-96
- LA GRANGE JJ 1991. The Beginning: 2. The first South African national Antarctic Expedition, 1959-60. *S. Afr. J. Antarct. Res.* 21(2): 98-106
- LAWS RM 1978. Ecological studies at South Georgia. *S. Afr. J. Antarct. Res.* 8: 3-13
- LAYCOCK PA see Williams AJ & PA Laycock 1981. Euphausiids in the diet of some sub-Antarctic *Eudyptes* penguins. *S. Afr. J. Antarct. Res.* 10/11: 27-28
- LEITH W 1991. Twelve years as master of the SA Agulhas. *S. Afr. J. Antarct. Res.* 21(2): 147-153
- LENGLART P-Y see Bester MN & P-Y Lenghart 1982. An analysis of the southern elephant seal *Mirounga leonina* breeding population at Kerguelen. *S. Afr. J. Antarct. Res.* 12: 11-16
- LE ROEX AP 1987. Crust-mantle evolution in the vicinity of the Bouvet Triple Junction - A synthesis. *S. Afr. J. Antarct. Res.* 17(2): 90-104
- LE ROEX A see Hunter DR, B Corner, JR Krynauw, A Le Roex, GH Grantham, PB Groenewald, AB Moyes, HW Bergh & C Harris 1991. A recent history of South African earth science research in Antarctica and adjacent regions. *S. Afr. J. Antarct. Res.* 21(2): 173-183
- LEWIS SMITH RI see Ryan PG, BP Watkins, RI Lewis Smith, H Dastych, A Eicker, W Foissner, H Heatwole, WR Miller & G Thompson 1989. Biological survey of Robertskollen, western Dronning Maud Land: area description and preliminary species lists. *S. Afr. J. Antarct. Res.* 19(1): 10-20
- LINDEBOOM HJ see Burger AE, HJ Lindeboom & AJ Williams 1978. Mineral and energy contributions of guano of selected species of birds to the Marion Island terrestrial ecosystem. *S. Afr. J. Antarct. Res.* 8: 59-70
- LINDESAY JA see Lucas MI & JA Lindesay 1991. Global climate change: Environmental and climatic links between Antarctica and South Africa. *S. Afr. J. Antarct. Res.* 21(2): 193-219
- LINSCOTT GR see Scourfield MWJ & GR Linscott 1974. A television system for auroral cinematography at Sanae, Antarctica. *S. Afr. J. Antarct. Res.* 4: 31-33
- LOOTS JM & KRÜGER M 1971. Studies of clothing and thermal comfort in Antarctica. *S. Afr. J. Antarct. Res.* 1: 11-15
- LUCAS MI see Painting SJ, MI Lucas & JME Stenton-Dozey 1985. X. Biomass and production of bacterioplankton in Prydz Bay, Antarctica: phytoplankton, detritus and bacterial relationships. *S. Afr. J. Antarct. Res.* 15: 42-52
- LUCAS MI & LINDESAY JA 1991. Global climate change: Environmental and climatic links between Antarctica and South Africa. *S. Afr. J. Antarct. Res.* 21(2): 193-219
- LUND R see Newton JP, J Cooper, F Mehlum & G Thor 1994. A bibliography of terrestrial biological research in Dronning Maud Land, Antarctica. *S. Afr. J. Antarct. Res.* 24(1 & 2): 111-124
- LUTJEHARMS JRE 1985. III. Detail of the upper thermal structure of the Southern Ocean between South Africa and Prydz Bay during March - May 1984. *S. Afr. J. Antarct. Res.* 15: 12-18
- LUTJEHARMS JRE 1986. Die wisselwerking tussen die Suidelike Oseaan en subtropiese sirkulasiekolke grensend aan Suider-Afrika - 'n Oorsig. *S. Afr. J. Antarct. Res.* 16(1): 2-8
- LUTJEHARMS JRE 1990. Temperatuurstruktuur van die oseaanbolaag tussen Kaapstad en Marion-eiland. *S. Afr. J. Antarct. Res.* 20(1): 21-32
- LUTJEHARMS JRE 1995. Bibliography of the South African Journal of Antarctic Research. *S. Afr. J. Antarct. Res.* 25: 51-84
- LUTJEHARMS JRE 1995. The South African Journal of Antarctic Research; an end to 26 years of publication. *S. Afr. J. Antarct. Res.* 25: 3-8
- LUTJEHARMS JRE 1991. A history of recent South African marine research in the Southern Ocean. *S. Afr. J. Antarct. Res.* 21(2): 159-164
- LUTJEHARMS JRE & EMERY WJ 1983. The detailed thermal structure of the upper ocean layers between Cape Town and Antarctica during the period Jan.-Feb. 1978. *S. Afr. J. Antarct. Res.* 13: 3-14
- LUTJEHARMS JRE & FOLDVIK A 1986. The thermal structure of the upper ocean layers between Africa and Antarctica during the period December 1978 to March 1979. *S. Afr. J. Antarct. Res.* 16(1): 13-20
- LUTJEHARMS JRE see Allanson BR, RC Hart & JRE Lutjeharms 1981. Observations on the nutrients, chlorophyll and primary production of the Southern Ocean south of Africa. *S. Afr. J. Antarct. Res.* 10/11: 3-14
- LUTJEHARMS JRE see Cockcroft VG, VM Peddemors, PG Ryan & JRE Lutjeharms 1990. Cetacean sightings in the Agulhas Retroflexion, Agulhas Rings and Subtropical Convergence. *S. Afr. J. Antarct. Res.* 20(2): 64-69
- MALAN OG & VAN ZYL AS 1979. A digital mosaic of Antarctic Landsat images. *S. Afr. J. Antarct. Res.* 9: 32-34
- MALAN OG see Cram DL & OG Malan 1977. On the possibility of surveying krill (*Euphausia dana*) in the Southern Ocean by remote sensing. *S. Afr. J. Antarct. Res.* 7: 14-19
- MARSHALL DJ, CRAFFORD JE, KRYNAUW JR, DRUMMOND AE & NEWTON IP 1995. The biology, physico-chemistry and geology of a nunatak pond at Valterkulen, western Dronning Maud Land, Antarctica. *S. Afr. J. Antarct. Res.* 25: 9-16
- MASSIN CI see Branch ML, M Jangoux, V Alvá, CI Massin & S Stapanato 1993. The Echinodermata of subantarctic Marion and Prince Edward Islands. *S. Afr. J. Antarct. Res.* 23(1 & 2): 37-70
- MATTHEWSON DC see Cooper J, JCP van Wyk & DC Matthewson 1994. Effects of small-mammal trapping on birds at sub-Antarctic Marion Island. *S. Afr. J. Antarct. Res.* 24(1 & 2): 125
- MEHLUM F see Newton IP, J Cooper, R Lund, F Mehlum & G Thor 1994. A bibliography of terrestrial biological research in Dronning Maud Land, Antarctica. *S. Afr. J. Antarct. Res.* 24(1 & 2): 111-124
- MILLER DGM 1982. Cannibalism in *Euphausia superba* Dana. *S. Afr. J. Antarct. Res.* 12: 50
- MILLER DGM 1982. Results of a combined hydroacoustic and midwater trawling survey of the Gough Island region. *S. Afr. J. Antarct. Res.* 12: 17-22
- MILLER DGM 1982. Results of a combined hydroacoustic and midwater trawling survey of the Prince Edward Island group. *S. Afr. J. Antarct. Res.* 12: 3-10
- MILLER DGM 1985. IX. Krill (*Euphausia superba* Dana). *S. Afr. J. Antarct. Res.* 15: 33-41
- MILLER DGM 1987. The South African SIBEX II Cruise to the Prydz Bay region, 1985: Cruise description and preliminary review of results. *S. Afr. J. Antarct. Res.* 17(2): 105-111
- MILLER DGM 1991. Conservation of Antarctic Marine Living Resources: a review and South African perspective. *S. Afr. J. Antarct. Res.* 21(2): 130-142
- MILLER DGM 1991. South African Research on Antarctic krill. *S. Afr. J. Antarct. Res.* 21(2): 143
- MILLER DGM 1991. The impact of BIOMASS-related research on South African Antarctic science. *S. Afr. J. Antarct. Res.* 21(2): 167-171
- MILLER DGM & TROMP BBS 1982. The hydrology of waters close to Gough Island. *S. Afr. J. Antarct. Res.* 12: 23-33
- MILLER DGM, BODEN BP & PARKER L 1984. Hydrology and bio-oceanography of the Prince Edward Islands (south-west Indian Ocean). *S. Afr. J. Antarct. Res.* 14: 29-31
- MILLER DGM see Butterworth DS & DGM Miller 1987. A note on relating Antarctic krill catch-per-unit-effort measures to abundance trends. *S. Afr. J. Antarct. Res.* 17(2): 112-116
- MILLER WR see Ryan PG, BP Watkins, RI Lewis Smith, H Dastych, A Eicker, W Foissner, H Heatwole, WR Miller & G Thompson 1989. Biological survey of Robertskollen, western Dronning Maud Land: area description and preliminary species lists. *S. Afr. J. Antarct. Res.* 19(1): 10-20
- MINNAAR HFB, KÖNIG PJ, STOKER PH & BOWERS BG 1975. An electron precipitation event recorded at Sanae on 14 November 1974. *S. Afr. J. Antarct. Res.* 5: 13-15
- MISCHKE CFW see Stoker PH & CFW Mischke 1973. The use of the neutron moderated detector for analysing cosmic ray events. *S. Afr. J. Antarct. Res.* 3: 38-41
- MISCHKE CFW see Kriel JN, CFW Mischke & PH Stoker 1973. The effect of the rising snow level on the counting rate of the Sanae neutron monitor. *S. Afr. J. Antarct. Res.* 3: 42-44
- MONTEIRO PMS, BACON EJ & ORREN MJ 1986. The South African SIBEX I Cruise to the Prydz Bay region, 1984. Determination of photosynthetic pigments and their breakdown products by High Performance Liquid Chromatography. *S. Afr. J. Antarct. Res.* 16(1): 21-24
- MONTEIRO PMS see Orren MJ, PMS Monteiro & Haraldsen 1985. IV. Silica, dissolved oxygen, and trace metals. *S. Afr. J. Antarct. Res.* 15: 19
- MORAAL H see Rash JPS, ADM Walker, JWJ Scourfield, PH Stoker & H Moraal 1991. SHARE - an HF Radar System for SANAE. *S. Afr. J. Antarct. Res.* 21(2): 185-186
- MORANT PD 1977. Bird ringing at Tristan da Cunha and Gough Islands, 1937-1977. *S. Afr. J. Antarct. Res.* 7: 23-26
- MORANT PD see Burger AE & PD Morant 1977. Bird ringing on Marion Island, 1975-1977. *S. Afr. J. Antarct. Res.* 7: 26-27
- MOSTERT D see Gon O & D Mostert 1992. Aspects

- of the ecology of two nototheniid fish species in the inshore zone of the sub-Antarctic Marion Island. *S. Afr. J. Antarct. Res.* 22(1 & 2): 59
- MOSTERT D *see* Gon O, DA Hendry & D Mostert 1994. Glycoprotein antifreeze in *Notothenia coriiceps* (Pisces: Nototheniidae) from the sub-Antarctic Marion Island. *S. Afr. J. Antarct. Res.* 24(1 & 2): 53-56
- MOYES AB 1993. The age and origin of the Jutulssessen granitic gneiss, Gjelsvikfjella, Dronning Maud Land. *S. Afr. J. Antarct. Res.* 23(1 & 2): 25-32
- MOYES AB *see* Hunter DR, B Corner, JR Krynauw, A le Roex, GH Grantham, PG Groenewald, AB Moyes, HW Bergh & C Harris 1991. A recent history of South African earth science research in Antarctica and adjacent regions. *S. Afr. J. Antarct. Res.* 21(2): 173-183
- NEETHLING DC 1972. South African Antarctic Earth Science Programme 1959-1969: Solid earth geophysics, oceanography and glaciology. *S. Afr. J. Antarct. Res.* 2: 2-15
- NEL M *see* Chevallier L, WJ Verwoerd, P Bova, E Stettler, A du Plessis, JG du Plessis, LM Fernandez & M Nel 1992. Volcanological features and preliminary geophysical investigation on Marion Island. *S. Afr. J. Antarct. Res.* 22(1 & 2): 15-35
- NEWTON IP 1994. Climatic data from Robertskollen, Dronning Maud Land, Antarctica, January 1993 to January 1995. *S. Afr. J. Antarct. Res.* 24(1 & 2): 103-110
- NEWTON IP, COOPER J, LUND R, MEHLUM F & THOR G 1994. A bibliography of terrestrial biological research in Dronning Maud Land, Antarctica. *S. Afr. J. Antarct. Res.* 24(1 & 2): 111-124
- NEWTON IP *see* Watkins BP, J Cooper & IP Newton 1984. Scientific research at Bouvet Island, 1785-1983: a bibliography. *S. Afr. J. Antarct. Res.* 14: 36-39
- NEWTON IP *see* Watkins BP, J Cooper & IP Newton 1984. Research into the natural sciences at the Tristan da Cunha islands, 1719-1983: a bibliography. *S. Afr. J. Antarct. Res.* 14: 40-47
- NEWTON IP *see* Marshall DJ, JE Crafford, JR Krynauw, AE Drummond & IP Newton 1995. The biology, physico-chemistry and geology of a nunatak pond at Valterkulten, western Dronning Maud Land, Antarctica. *S. Afr. J. Antarct. Res.* 25: 9-16
- OATLEY TB *see* Brown CR & TB Oatley 1982. Bird ringing at Marion and Prince Edward islands, 1977-1982. *S. Afr. J. Antarct. Res.* 12: 45-48
- ORREN MJ, MONTEIRO PMS & HARALDSEN L 1985. IV. Silica, dissolved oxygen, and trace metals. *S. Afr. J. Antarct. Res.* 15: 19
- ORREN MJ *see* Monteiro PMS, EJ Bacon & MJ Orren 1986. The South African SIBEX I Cruise to the Prydz Bay region, 1984. Determination of photosynthetic pigments and their breakdown products by High Performance Liquid Chromatography. *S. Afr. J. Antarct. Res.* 16(1): 21-24
- PAINTING SJ, LUCAS MI & STENTON-DOZEY JME 1985. X. Biomass and production of bacterio-plankton in Prydz Bay, Antarctica: phytoplankton, detritus and bacterial relationships. *S. Afr. J. Antarct. Res.* 15: 42-52
- PAMMENTER NM *see* Smith VR, NM Pammenter & PM Drennan 1986. A case study of an alien vascular plant (*Agrostis stolonifera*) introduced on Marion Island. *S. Afr. J. Antarct. Res.* 16(3): 128
- PANAGIS K 1981. Local movement of southern elephant seal pups *Mirounga leonina* (Linn.) at Marion Island. *S. Afr. J. Antarct. Res.* 10/11: 28-31
- PANAGIS K, APPS P & KNIGHT MH 1982. Seal Finger: occurrence in Antarctica. *S. Afr. J. Antarct. Res.* 12: 49
- PARKER L *see* Allanson BR & L Parker 1985. I. Introduction, track charts and cruise description. *S. Afr. J. Antarct. Res.* 15: 6-7
- PARKER L *see* Miller DGM, BP Boden & L Parker 1984. Hydrology and bio-oceanography of the Prince Edward Islands (south-west Indian Ocean). *S. Afr. J. Antarct. Res.* 14: 29-31
- PEDDEMORS VM *see* Cockroft VG, VM Peddemors, PG Ryan & JRE Lutjeharms 1990. Cetacean sightings in the Agulhas Retroflexion, Agulhas Rings and Sub-tropical Convergence. *S. Afr. J. Antarct. Res.* 20(2): 64-69
- PERISSINOTTO R & BODEN BP 1989. Zooplankton-phytoplankton relationships at the Prince Edward Islands during April/May 1985 and 1986. *S. Afr. J. Antarct. Res.* 19(1): 26-30
- POLLAK WH & SHARWOOD D 1971. Gravimetric determination of ocean tidal effect on the Fimbul Ice-shelf, Princess Martha Coast, Queen Maud Land. *S. Afr. J. Antarct. Res.* 1: 30-32
- POTGIETER TI *see* Taljaard JJ & TI Potgieter 1976. Surface temperature and sea-level pressure at Norway Station and Sanae. *S. Afr. J. Antarct. Res.* 6: 26-28
- PRINS AJ *see* Brooke RK & AJ Prins 1986. Review of alien species on South African offshore islands. *S. Afr. J. Antarct. Res.* 16(3): 102-109
- RANDALL BM, RANDALL RM & ROSSOUW GJ 1983. Plastic particle pollution in great shearwaters (*Puffinus gravis*) from Gough Island. *S. Afr. J. Antarct. Res.* 13: 49-50
- RANDALL RM *see* Randall BM, RM Randall & GJ Rossouw 1983. Plastic particle pollution in great shearwaters (*Puffinus gravis*) from Gough Island. *S. Afr. J. Antarct. Res.* 13: 49-50
- RASH JPS, Walker ADM, Scourfield MWJ, Stoker PH & Moraal H 1991. SHARE - an HF Radar System for SANAE. *S. Afr. J. Antarct. Res.* 21(2): 185-186
- REID FMH *see* Boden BP & FMH Reid 1989. Marine plankton diatoms between Cape Town and the Prince Edward Islands (SW Indian Ocean). *S. Afr. J. Antarct. Res.* 19(2): 2-49
- ROBERTSON AA *see* Cram DL, JJ Agenbag, I Hampton & AA Robertson 1979. SAS Protea Cruise, 1978. The general results of the acoustics and remote sensing study, with recommendations for estimating the abundance of krill (*Euphasia superba* Dana). *S. Afr. J. Antarct. Res.* 9: 3-14
- ROBINSON TJ *see* Skinner JD, PR Condy, RJ van Aarde, MN Bester & TJ Robinson 1978. The mammals of Marion Island: a review. *S. Afr. J. Antarct. Res.* 8: 35-38
- ROSSOUW GJ *see* Randall BM, RM Randall & GJ Rossouw 1983. Plastic particle pollution in great shearwaters (*Puffinus gravis*) from Gough Island. *S. Afr. J. Antarct. Res.* 13: 49-50
- ROUX J-P *see* Bester MN & J-P Roux 1986. Summer presence of leopard seals *Hydrurga leptonyx* at the Courbet peninsula, Iles Kerguelen. *S. Afr. J. Antarct. Res.* 16(1): 29-32
- ROUX J-P *see* Bester MN & J-P Roux 1986. The second survey of Antarctic fur seals *Arctocephalus gazella* on the Courbet Peninsula, Iles Kerguelen. *S. Afr. J. Antarct. Res.* 16(1): 33-37
- ROUX J-P *see* Hes AD & J-P Roux 1983. Population increase in the sub-Antarctic fur seal *Arctocephalus tropicalis* at Amsterdam Island. *S. Afr. J. Antarct. Res.* 13: 29-34
- RYAN PG 1987. The distribution, population size and foraging behaviour of Kerguelen terns at the Prince Edward Islands. *S. Afr. J. Antarct. Res.* 17(2): 163-166
- RYAN PG & WATKINS BP 1988. Accumulation of stranded plastic objects and other artefacts at Inaccessible Island, central South Atlantic Ocean. *S. Afr. J. Antarct. Res.* 18(1): 11-13
- RYAN PG, WATKINS BP, LEWIS SMITH RI, DASTYCH H, EICKER A, FOISSNER W, HEATWOLE W, MILLER WR & THOMPSON G 1989. Biological survey of Robertskollen, western Dronning Maud Land: area description and preliminary species lists. *S. Afr. J. Antarct. Res.* 19(1): 10-20
- RYAN PG *see* Cockroft VG, VM Peddemors, PG Ryan & JRE Lutjeharms 1990. Cetacean sightings in the Agulhas Retroflexion, Agulhas Rings and Subtropical Convergence. *S. Afr. J. Antarct. Res.* 20(2): 64-69
- SCHAEFER TG 1972. Radio echo sounding in western Dronning Maud Land, 1971 - a preview. *S. Afr. J. Antarct. Res.* 2: 53-56
- SCHAEFER TG 1973. Radio echo sounding in western Dronning Maud Land, 1971. *S. Afr. J. Antarct. Res.* 3: 45-52
- SCHOLTZ CH *see* Crafford JE, CH Scholtz & SL Chown 1986. The Insects of sub-Antarctic Marion and Prince Edward Islands; with a bibliography of Entomology of the Kerguelen Biogeographical Province. *S. Afr. J. Antarct. Res.* 16(2): 42-84
- SCHÖNFELD SG & VAN ZYL CZ 1974. Geophysical traverses in the Ahlmannryggen, western Dronning Maud Land 1973. *S. Afr. J. Antarct. Res.* 4: 50-57
- SCHRAMM M 1983. Predation by subantarctic skuas *Catharacta antarctica* on burrowing petrels at Marion Island. *S. Afr. J. Antarct. Res.* 13: 41-44
- SCHRAMM M *see* Berruti A, AM Griffiths, MJ Imber, M Schramm & JC Sinclair 1981. The status of seabirds at Prince Edward Island. *S. Afr. J. Antarct. Res.* 10/11: 31-32
- SCOURFIELD MWJ & LINSKOTT GR 1974. A television system for auroral cinematography at Sanae, Antarctica. *S. Afr. J. Antarct. Res.* 4: 31-33
- SCOURFIELD MWJ *see* Bodeker GE & MWJ Scourfield 1991. SANAE total column ozone: 1980 to 1990. *S. Afr. J. Antarct. Res.* 21(2): 220-221
- SCOURFIELD MWJ *see* Hough G & MWJ Scourfield 1991. WAND auroral imager for SANAE. *S. Afr. J. Antarct. Res.* 21(2): 113
- SCOURFIELD MWJ *see* Hughes ARW & MWJ Scourfield 1991. SANAE: The Durban Connection. *S. Afr. J. Antarct. Res.* 21(2): 187-192
- SCOURFIELD MWJ *see* Stephenson JAE & MWJ Scourfield 1991. Natural ozone depletion over Antarctica. *S. Afr. J. Antarct. Res.* 21(2): 222
- SCOURFIELD MWJ *see* Rash JPS, ADM Walker, MWJ Scourfield, PH Stoker & H Moraal 1991. SHARE - an HF Radar System for SANAE. *S. Afr. J. Antarct. Res.* 21(2): 185-186
- SHANNON LV 1991. A photographic account of voyages of Captain R L V Shannon to the Antarctic in the 1920s. *S. Afr. J. Antarct. Res.* 21(2): 108-112
- SHARWOOD D *see* Pollak WH, & D Sharwood 1971. Gravimetric determination of ocean tidal effect on the Fimbul Ice-shelf, Princess Martha Coast, Queen Maud Land. *S. Afr. J. Antarct. Res.* 1: 30-32
- SHAUGHNESSY PD 1975. Observations on the seals of Gough Island. *S. Afr. J. Antarct. Res.* 5: 42-44
- SHAUGHNESSY PD & FAIRALL N 1976. Notes on seabirds at Gough Island. *S. Afr. J. Antarct. Res.* 6: 23-25
- SHAUGHNESSY PD *see* Johnstone GW, PD Shaughnessy & JWH Conroy 1976. Giant-petrels in the South Atlantic: new data from Gough Island. *S. Afr. J. Antarct. Res.* 6: 19-22
- SIEG J *see* Branch ML, CL Griffiths, B Kensley & J Sieg 1991. The benthic Crustacea of subantarctic Marion and Prince Edward Islands: Illustrated keys to the species and results of the 1982 - 1989 University of Cape Town Surveys. *S. Afr. J. Antarct. Res.* 21(1): 3-44
- SIEGFRIED WR 1978. Ornithological research at the Prince Edward islands: a review of progress. *S. Afr. J. Antarct. Res.* 8: 30-34
- SIEGFRIED WR 1991. Three decades of South African science in Antarctica. *S. Afr. J. Antarct. Res.* 21(2): 225-229
- SIEGFRIED WR, FORBES PF & CONDY PR 1979. Scientific research at the Prince Edward islands, 1847-

- 1979: a bibliography. *S. Afr. J. Antarct. Res.* 9: 35-41
- SIEGFRIED WR, WILLIAMS AJ, BURGER AE & BERRUTI A 1978. Mineral and energy contributions of eggs of selected species of seabirds to the Marion Island terrestrial ecosystem. *S. Afr. J. Antarct. Res.* 8: 75-87
- SIEGFRIED WR *see* Berruti A, AE Burger, AJ Williams & WR Siegfried 1975. Bird ringing on Marion Island. *S. Afr. J. Antarct. Res.* 5: 50-52
- SIEGFRIED WR *see* Williams AJ, AE Burger, A Berruti & WR Siegfried 1975. Ornithological research on Marion Island, 1974-75. *S. Afr. J. Antarct. Res.* 5: 48-50
- SINCLAIR JC *see* Berruti A, AM Griffiths, MJ Imber, M Schramm & JC Sinclair 1981. The status of seabirds at Prince Edward Island. *S. Afr. J. Antarct. Res.* 10/11: 31-32
- SKINNER JD, CONDY PR, VAN AARDE RJ, BESTER MN & ROBINSON TJ 1978. The mammals of Marion Island: a review. *S. Afr. J. Antarct. Res.* 8: 35-38
- SKINNER JD *see* Bester MN & JD Skinner 1991. South African research on Antarctic Seals. *S. Afr. J. Antarct. Res.* 21(2): 165-166
- SKINNER JD *see* Bester MN & JC Skinner 1991. The Marion Island cat programme. *S. Afr. J. Antarct. Res.* 21(2): 117
- SMITH VR 1977. The chemical composition of Marion Island soils, plants and vegetation. *S. Afr. J. Antarct. Res.* 7: 28-39
- SMITH VR 1978. Plant ecology of Marion Island: a review. *S. Afr. J. Antarct. Res.* 8: 21-30
- SMITH VR 1978. Plant responses to osmotic stress in the coastal zone of Marion Island. *S. Afr. J. Antarct. Res.* 8: 106-113
- SMITH VR 1978. Standing crop and production estimates of selected Marion Island plant communities. *S. Afr. J. Antarct. Res.* 8: 103-105
- SMITH VR 1984. The effect of glucose, P, Co and Mo on heterotrophic acetylene reduction in a sub-Antarctic peat. *S. Afr. J. Antarct. Res.* 14: 27-28
- SMITH VR 1987. Seasonal changes in plant and soil chemical composition at Marion Island (sub-Antarctic): I - Mire-grasslands. *S. Afr. J. Antarct. Res.* 17(2): 117-132
- SMITH VR 1987. Seasonal changes in plant and soil chemical composition at Marion Island (sub-Antarctic): II - Fjaeldmark and fernbrakes. *S. Afr. J. Antarct. Res.* 17(2): 133-154
- SMITH VR 1991. Terrestrial biological research at the Prince Edward Islands. *S. Afr. J. Antarct. Res.* 21(2): 118-123
- SMITH VR 1991. Climate change and its ecological consequences at Marion and Prince Edward Islands. *S. Afr. J. Antarct. Res.* 21(2): 223-224
- SMITH VR & ASHTON PJ 1981. Bryophyte-cyanobacteria associations on sub-Antarctic Marion Island: are they important in nitrogen fixation? *S. Afr. J. Antarct. Res.* 10/11: 24-26
- SMITH VR & HILMER T 1984. Bacterial numbers in the freshwater bodies of a sub-Antarctic island. *S. Afr. J. Antarct. Res.* 14: 23-26
- SMITH VR, PAMMENTER NM & DRENNAN PM 1986. A case study of an alien vascular plant (*Agrostis stolonifera*) introduced on Marion Island. *S. Afr. J. Antarct. Res.* 16(3): 128
- SMITH VR *see* French DD & VR Smith 1983. A note on the feeding of *Pringleophaga marioni* Vietti larvae at Marion Island. *S. Afr. J. Antarct. Res.* 13: 45-46
- SMITH VR *see* Gremmen NJM & VR Smith 1981. *Agrostis stolonifera* L. on Marion Island (sub-Antarctic). *S. Afr. J. Antarct. Res.* 10/11: 33-34
- SMITH VR *see* Steyn MG & VR Smith 1981. Microbial populations in Marion Island soils. *S. Afr. J. Antarct. Res.* 10/11: 14-18
- SOUTH AFRICAN WEATHER BUREAU 1971. Monthly mean temperature and sea-level pressure at Norway Station and Sanae since 1960. *S. Afr. J. Antarct. Res.* 1: 33
- STAMPANATO S *see* Branch ML, M Jangoux, V Alvá, CI Massin & S Stampanato 1993. The Echinodermata of subantarctic Marion and Prince Edward Islands. *S. Afr. J. Antarct. Res.* 23(1 & 2): 37-70
- STEELE WK, BALFOUR DA, HARRIS JM, DASTYCH H, HEYNS J & EICKER A 1994. Preliminary biological survey of Vesleskarvet, northern Ahlmannryggen, western Dronning Maud Land: site of South Africa's new Antarctic base (sic). *S. Afr. J. Antarct. Res.* 24(1 & 2): 57-65
- STENTON-DOZEY JME *see* Painting SJ, MI Lucas & JME Stenton-Dozey 1985. X. Biomass and production of bacterio-plankton in Prydz Bay, Antarctica: phytoplankton, detritus and bacterial relationships. *S. Afr. J. Antarct. Res.* 15: 42-52
- STEPHENSON JAE & SCOURFIELD MWJ 1991. Natural ozone depletion over Antarctica. *S. Afr. J. Antarct. Res.* 21(2): 222
- STETTLER E *see* Chevallier L, WJ Verwoerd, P Bova, E Stettler, A du Plessis, JG du Plessis, JM Fernandez & M Nel 1992. Volcanological features and preliminary geophysical investigation on Marion Island. *S. Afr. J. Antarct. Res.* 22(1 & 2): 15-35
- STEYN MG & VR Smith 1981. Microbial populations in Marion Island soils. *S. Afr. J. Antarct. Res.* 10/11: 14-18
- STOKER PH 1991. Exploring geospace and the heliosphere by cosmic rays. *S. Afr. J. Antarct. Res.* 21(2): 158
- STOKER PH 1991. Magnetospheric electrons precipitating into the atmosphere. *S. Afr. J. Antarct. Res.* 21(2): 107
- STOKER PH & MISCHKE CFW 1973. The use of the neutron moderated detector for analysing cosmic ray events. *S. Afr. J. Antarct. Res.* 3: 38-41
- STOKER PH *see* Kriel JN, CFW Mischke & PH Stoker 1973. The effect of the rising snow level on the counting rate of the Sanae neutron monitor. *S. Afr. J. Antarct. Res.* 3: 42-44
- STOKER PH *see* Van der Walt AJ, PH Stoker & H W Alberts 1972. Latitude distribution of cosmic rays at sea level from 1963 to 1970. *S. Afr. J. Antarct. Res.* 2: 48-52
- STOKER PH *see* Minnaar HFB, PJ König, PH Stoker & BG Bowers 1975. An electron precipitation event recorded at Sanae on 14 November 1974. *S. Afr. J. Antarct. Res.* 5: 13-15
- STOKER PH *see* Rash JPS, ADM Walker, MWJ Scourfield, PH Stoker & H Moraal 1991. SHARE - an HF Radar System for SANAE. *S. Afr. J. Antarct. Res.* 21(2): 185-186
- SUTCLIFFE PR 1973. Pulsation phenomena observed during a magnetospheric substorm at Sanae. *S. Afr. J. Antarct. Res.* 3: 22-25
- SUTCLIFFE PR 1975. A note on the morphology of Pi2 spectra. *S. Afr. J. Antarct. Res.* 5: 16-20
- SUTCLIFFE PR 1976. A note on the daily variation of the geomagnetic vertical intensity at Marion Island. *S. Afr. J. Antarct. Res.* 6: 32-34
- SUTCLIFFE PR *see* Kühn GJ & PR Sutcliffe 1973. Some aspects of Sq at Sanae. *S. Afr. J. Antarct. Res.* 3: 26-32
- SWANEPOEL JJP 1995. Stratigraphy and sedimentology of the Ahlmannryggen group in the Borgmassivet, western Queen Maud Land. *S. Afr. J. Antarct. Res.* 25: 17-50
- SWIERSTRA MJ 1991. South African National Committee for SCAR. *S. Afr. J. Antarct. Res.* 21(2): 114-116
- TALJAARD JJ & POTGIETER TI 1976. Surface temperature and sea-level pressure at Norway Station and Sanae. *S. Afr. J. Antarct. Res.* 6: 26-28
- THERON GL 1991. Vliegoperasies ter ondersteuning van die Suid-Afrikaanse Antarktiese en Eilandnavorsingsprogram. *S. Afr. J. Antarct. Res.* 21(2): 154-157
- THOMPSON G *see* Ryan PG, BP Watkins, RI Lewis Smith, H Dastych, A Eicker, W Foissner, H Heatwole, WR Miller & G Thompson 1989. Biological survey of Roberts-kollen, western Dronning Maud Land: area description and preliminary species lists. *S. Afr. J. Antarct. Res.* 19(1): 10-20
- THOR G *see* Newton IP, J Cooper, R Lund, F Mehlum & G Thor 1994. A bibliography of terrestrial biological research in Dronning Maud Land, Antarctica. *S. Afr. J. Antarct. Res.* 24(1 & 2): 111-124
- TORR DG & TORR MR 1972. Problems in explaining the behaviour of the F1 layer. *S. Afr. J. Antarct. Res.* 2: 40-44
- TORR DG *see* Torr MR & DG Torr 1971. OI and N₂ emissions observed at Sanae. *S. Afr. J. Antarct. Res.* 1: 24-26
- TORR DG *see* Torr MR & DG Torr 1971. The behaviour of foF2 at Sanae. *S. Afr. J. Antarct. Res.* 1: 16-21
- TORR DG *see* Torr MR & DG Torr 1971. The effects of a partial solar eclipse on the ionosphere at Sanae. *S. Afr. J. Antarct. Res.* 41: 27-29
- TORR DG *see* Torr MR & DG Torr 1972. Ionization enhancements in the post-midnight hours at some Antarctic stations and the diurnal excursion of the auroral oval. *S. Afr. J. Antarct. Res.* 2: 32-34
- TORR MR & TORR DG 1971. OI and N₂ emissions observed at Sanae. *S. Afr. J. Antarct. Res.* 1: 24-26
- TORR MR & TORR DG 1971. The behaviour of foF2 at Sanae. *S. Afr. J. Antarct. Res.* 1: 16-21
- TORR MR & TORR DG 1971. The effects of a partial solar eclipse on the ionosphere at Sanae. *S. Afr. J. Antarct. Res.* 1: 27-29
- TORR MR & TORR DG 1972. Ionization enhancements in the post-midnight hours at some Antarctic stations and the diurnal excursion of the auroral oval. *S. Afr. J. Antarct. Res.* 2: 32-34
- TORR MR *see* Torr DG & MR Torr 1972. Problems in explaining the behaviour of the F1 layer. *S. Afr. J. Antarct. Res.* 2: 40-44
- TROMP BBS *see* Miller DGM & BBS Tromp 1982. The hydrology of waters close to Gough Island. *S. Afr. J. Antarct. Res.* 12: 23-33
- VAN AARDE RJ 1979. Distribution and density of the feral house cat *Felis catus* on Marion Island. *S. Afr. J. Antarct. Res.* 9: 14-19
- VAN AARDE RJ 1986. A case study of an alien predator (*Felis catus*) introduced on Marion Island: Selective advantages. *S. Afr. J. Antarct. Res.* 16(3): 113-114
- VAN AARDE RJ *see* Skinner JD, P. Condy, RJ van Aarde, M. Bester & TJ Robinson 1978. The mammals of Marion Island: a review. *S. Afr. J. Antarct. Res.* 8: 35-38
- VAN DER WALT AJ, STOKER PH & ALBERTS HW 1972. Latitude distribution of cosmic rays at sea level from 1963 to 1970. *S. Afr. J. Antarct. Res.* 2: 48-52
- VAN MEIJDEN R *see* Gremmen NJM & R van Meijden 1995. Introduced *Agrostus* species at sub-antarctic Marion Island. *S. Afr. J. Antarct. Res.* 25: ????
- VAN RENSBURG PJJ 1986. Control of the Marion Island cat (*Felis catus*) population: Why and how. *S. Afr. J. Antarct. Res.* 16(3): 110-112
- VAN RENSBURG PJJ *see* Gleeson JP & PJJ van Rensburg 1982. Feeding ecology of the house mouse *Mus musculus* on Marion Island. *S. Afr. J. Antarct. Res.* 12: 34-39
- VAN SCHALKWYK DJ & DE WET PB 1991. 'n Oorsig oor Suid-Afrika se Antarktiese en sub-Antarktiese betrokkenheid. *S. Afr. J. Antarct. Res.*

- 21(2): 144-146
- VAN WIJK AM 1971. Geomagnetic secular variations at the South African Antarctic Base, Sanae. *S. Afr. J. Antarct. Res.* 1: 34
- VAN WYK JCP *see* Cooper J, JCP van Wyk & DC Matthewson 1994. Effects of small-mammal trapping on birds at sub-Antarctic Marion Island. *S. Afr. J. Antarct. Res.* 24(1 & 2): 125
- VAN WYK JCP *see* Cooper J, NL Avenant & JCP van Wyk 1994. Observations of the shortsnout lancetfish *Alepisaurus brevirostris* at sub-Antarctic Marion Island. *S. Afr. J. Antarct. Res.* 24(1 & 2): 126
- VAN ZINDEREN BAKKER EM 1971. The glaciation of Marion Island. *S. Afr. J. Antarct. Res.* 1: 35
- VAN ZINDEREN BAKKER EM 1973. The second South African Biological Expedition to Marion Island, 1971-72. *S. Afr. J. Antarct. Res.* 3: 60-63
- VAN ZINDEREN BAKKER EM 1978. Origin and general ecology of the Marion Island ecosystem. *S. Afr. J. Antarct. Res.* 8: 13-21
- VAN ZYL AS *see* Malan OG & AS van Zyl 1979. A digital mosaic of Antarctic Landsat images. *S. Afr. J. Antarct. Res.* 9: 32-34
- VAN ZYL CZ 1974. Cross-bedding and palaeocurrents in the Ahlmannryggen, western Dronning Maud Land. *S. Afr. J. Antarct. Res.* 4: 6-10
- VAN ZYL CZ 1974. Studies on ten-metre firn temperatures, moraines and blue ice fields in western Dronning Maud Land. *S. Afr. J. Antarct. Res.* 4: 11-15
- VAN ZYL CZ 1974. The geology of Istind, western Dronning Maud Land, and the relationship between the Istind and Tindeklypa Formations. *S. Afr. J. Antarct. Res.* 4: 2-5
- VAN ZYL CZ *see* Schönfeld SG & CZ van Zyl 1974. Geophysical traverses in the Ahlmannryggen, western Dronning Maud Land 1973. *S. Afr. J. Antarct. Res.* 4: 50-57
- VAN ZYL RB 1973. Radio echo sounding in western Dronning Maud Land, 1972. *S. Afr. J. Antarct. Res.* 3: 53-59
- VERMEULEN LP 1975. Die ontwikkeling van 'n kriterium vir aanpassing by Antarktiese toestande. *S. Afr. J. Antarct. Res.* 5: 21-24
- VERWOERD WJ *see* Chevallier L, WJ Verwoerd, P Bova, E Stettler, A du Plessis, JG du Plessis, LM Fernandez & M Nel 1992. Volcanological features and preliminary geophysical investigation on Marion Island. *S. Afr. J. Antarct. Res.* 22(1 & 2): 15-35
- VIALL JD 1991. South Africa: The Road to the Antarctic Treaty. *S. Afr. J. Antarct. Res.* 21(2): 125-128
- VOISIN J-F 1984. Observations on the birds and mammals of île aux Cochons, Crozet Islands, in February 1982. *S. Afr. J. Antarct. Res.* 14: 11-17
- VON BRUNN V *see* Krynauw JR, AR Allen, SH Auret & V von Brunn 1983. A note on breeding sites of snow petrels (*Pagodroma nivea*) at Robertskollen, Boreas and Passat nunataks and Johnsbrotet, western Dronning Maud Land, Antarctica. *S. Afr. J. Antarct. Res.* 13: 51-53
- WACE N 1986. The arrival, establishment and control of alien plants on Gough Island. *S. Afr. J. Antarct. Res.* 16(3): 95-101
- WALKER ADM & DEANE KF 1974. Methods of scaling whistlers in the absence of the initiating spheric and nose frequency. *S. Afr. J. Antarct. Res.* 4: 27-30
- WALKER ADM *see* Rash JPS, ADM Walker, MWJ Scourfield, PH Stoker & H Moraal 1991. SHARE - an HF Radar System for SANAE. *S. Afr. J. Antarct. Res.* 21(2): 185-186
- WATKINS BP 1981. Seabird observations at Bouvet Island. *S. Afr. J. Antarct. Res.* 10/11: 38-40
- WATKINS BP 1987. Population sizes of king, rockhopper and macaroni penguins and wandering albatrosses at the Prince Edward Islands and Gough Island, 1951-1986. *S. Afr. J. Antarct. Res.* 17(2): 155-162
- WATKINS BP & COOPER J 1983. Scientific research at Gough Island, 1869-1982: a bibliography. *S. Afr. J. Antarct. Res.* 13: 54-58
- WATKINS BP & COOPER J 1986. Introduction, present status and control of alien species at the Prince Edward islands, sub-Antarctic. *S. Afr. J. Antarct. Res.* 16(3): 86-94
- WATKINS BP, COOPER J & NEWTON IP 1984. Research into the natural sciences at the Tristan da Cunha islands, 1719-1983: a bibliography. *S. Afr. J. Antarct. Res.* 14: 40-47
- WATKINS BP, COOPER J & NEWTON IP 1984. Scientific research at Bouvet Island, 1785-1983: a bibliography. *S. Afr. J. Antarct. Res.* 14: 36-39
- WATKINS RT *see* Harris C & RT Watkins 1989. Seal carcass at Tvora (0°5'W, 72°12'S), western Dronning Maud Land, Antarctica. *S. Afr. J. Antarct. Res.* 19(1): 34-35
- WATKINS BP *see* Ryan PG & BP Watkins 1988. Accumulation of stranded plastic objects and other artefacts at Inaccessible Island, central South Atlantic Ocean. *S. Afr. J. Antarct. Res.* 18(1): 11-13
- WATKINS BP *see* Ryan PG, BP Watkins, RI Lewis Smith, H Dastych, A Eicker, W Foissner, H Heatwole, WR Miller & G Thompson 1989. Biological survey of Robertskollen, western Dronning Maud Land: area description and preliminary species lists. *S. Afr. J. Antarct. Res.* 19(1): 10-20
- WATTERS BR 1972. The Straumnsnutane Volcanics, western Dronning Maud Land. *S. Afr. J. Antarct. Res.* 2: 23-31
- WILKINSON IS & BESTER MN 1988. Is onshore human activity a factor in the decline of the southern elephant seal? *S. Afr. J. Antarct. Res.* 18(1): 14-17
- WILKINSON IS & MN BESTER 1990. Continued population increase in fur seals, *Arctocephalus tropicalis* and *A. gazella*, at the Prince Edward Islands. *S. Afr. J. Antarct. Res.* 20(2): 58-63
- WILLIAMS AJ 1978. Mineral and energy contributions of petrels (*Procellariiformes*) killed by cats, to the Marion Island terrestrial ecosystem. *S. Afr. J. Antarct. Res.* 8: 49-53
- WILLIAMS AJ & BERRUTI A 1978. Mineral and energy contributions of feathers moulted by penguins, gulls and cormorants to the Marion Island terrestrial ecosystem. *S. Afr. J. Antarct. Res.* 8: 71-74
- WILLIAMS AJ & IMBER MJ 1982. Ornithological observations at Gough Island in 1979, 1980 and 1981. *S. Afr. J. Antarct. Res.* 12: 40-45
- WILLIAMS AJ & LAYCOCK PA 1981. Euphausiids in the diet of some sub-Antarctic *Eudyptes* penguins. *S. Afr. J. Antarct. Res.* 10/11: 27-28
- WILLIAMS AJ, BURGER AE & BERRUTI A 1978. Mineral and energy contributions of carcasses of selected species of seabirds to the Marion Island terrestrial ecosystem. *S. Afr. J. Antarct. Res.* 8: 53-59
- WILLIAMS AJ, BURGER AE, BERRUTI A & SIEGFRIED WR 1975. Ornithological research on Marion Island, 1974-75. *S. Afr. J. Antarct. Res.* 5: 48-50
- WILLIAMS AJ *see* Hall KJ & AJ Williams 1981. Animals as agents of erosion at sub-Antarctic Marion Island. *S. Afr. J. Antarct. Res.* 10/11: 18-24
- WILLIAMS AJ *see* Burger A, HJ Lindeboom & AJ Williams 1978. Mineral and energy contributions of guano of selected species of birds to the Marion Island terrestrial ecosystem. *S. Afr. J. Antarct. Res.* 8: 59-70
- WILLIAMS AJ *see* Berruti A, AE Burger, WR Siegfried & AJ Williams 1975. Bird ringing on Marion Island. *S. Afr. J. Antarct. Res.* 5: 50-52
- WILLIAMS AJ *see* Siegfried WR, AJ Williams, AE Burger & A Berruti 1978. Mineral and energy contributions of eggs of selected species of seabirds to the Marion Island terrestrial ecosystem. *S. Afr. J. Antarct. Res.* 8: 75-87
- WILLIAMS GC *see* Branch ML & GC Williams 1993. The Hydrozoa, Octocorallia and Scleractinia of subantarctic Marion and Prince Edward Islands: Illustrated keys to the species and results of the 1982-1989 University of Cape Town surveys. *S. Afr. J. Antarct. Res.* 23(1 & 2): 3-24
- WILLIAMS MH 1974. The transition between LT- and UT-controlled behaviour of Antarctic foF2. *S. Afr. J. Antarct. Res.* 4: 23-26
- WILSON VJ 1975. A second survey of seals in the King Haakon VII Sea, Antarctica. *S. Afr. J. Antarct. Res.* 5: 31-36
- WILSON AH *see* Krynauw JR, DR Hunter & AH Wilson 1984. A note on the layered intrusions at Annandagstoppane and Juletoppane, Western Dronning Maud Land. *S. Afr. J. Antarct. Res.* 14: 2-10
- WILSON AH *see* Krynauw JR, DR Hunter & AH Wilson 1990. A reassessment of the Nils Jörgennutane suite in the Ahlmannryggen. *S. Afr. J. Antarct. Res.* 20(1): 2-8
- WOLMARANS LG & KENTLE 1982. Geological investigations in Western Dronning Maud Land, Antarctica - a synthesis. *S. Afr. J. Antarct. Res.* Supplement 2: 4-93, plates
- WOOLDRIDGE TH *see* Frost PGH, JR Grindley & TH Wooldridge 1976. Report on South Africa (sic) participation in cruise MD08 of M S Marion Dufresne, March-April 1976. *S. Afr. J. Antarct. Res.* 6: 28-29

Chronological listing

1971

- GLEDHILL JA 1971. Scientific results of the South African Antarctic Ionosphere programme 1962-1970. *S. Afr. J. Antarc. Res.* 1: 3-10
- KRÜGER M *see* Loots JM & M Krüger 1971. Studies of clothing and thermal comfort in Antarctica. *S. Afr. J. Antarc. Res.* 1: 11-15
- KÜHN GJ 1971. A relationship between riometer absorption events at different latitudes near the auroral oval. *S. Afr. J. Antarc. Res.* 1: 22-23
- LOOTS JM & KRÜGER M 1971. Studies of clothing and thermal comfort in Antarctica. *S. Afr. J. Antarc. Res.* 1: 11-15
- POLLAK WH & SHARWOOD D 1971. Gravimetric determination of ocean tidal effect on the Fimbul Ice-shelf, Princess Martha Coast, Queen Maud Land. *S. Afr. J. Antarc. Res.* 1: 30-32
- SHARWOOD D *see* Pollak WH, & D Sharwood 1971. Gravimetric determination of ocean tidal effect on the Fimbul Ice-shelf, Princess Martha Coast, Queen Maud Land. *S. Afr. J. Antarc. Res.* 1: 30-32
- SOUTH AFRICAN WEATHER BUREAU 1971. Monthly mean temperature and sea-level pressure at Norway Station and Sanae since 1960. *S. Afr. J. Antarc. Res.* 1: 33
- TORR DG *see* Torr MR & DG Torr 1971. The behaviour of foF2 at Sanae. *S. Afr. J. Antarc. Res.* 1: 16-21
- TORR DG *see* Torr MR & DG Torr 1971. OI and N₂ emissions observed at Sanae. *S. Afr. J. Antarc. Res.* 1: 24-26
- TORR DG *see* Torr MR & DG Torr 1971. The effects of a partial solar eclipse on the ionosphere at Sanae. *S. Afr. J. Antarc. Res.* 1: 27-29
- TORR MR & TORR DG 1971. The behaviour of foF2 at Sanae. *S. Afr. J. Antarc. Res.* 1: 16-21
- TORR MR & TORR DG 1971. OI and N₂ emissions observed at Sanae. *S. Afr. J. Antarc. Res.* 1: 24-26
- TORR MR & TORR DG 1971. The effects of a partial solar eclipse on the ionosphere at Sanae. *S. Afr. J. Antarc. Res.* 1: 27-29
- VAN WIJK AM 1971. Geomagnetic secular variations at the South African Antarctic Base, Sanae. *S. Afr. J. Antarc. Res.* 1: 34
- VAN ZINDEREN BAKKER EM 1971. The glaciation of Marion Island. *S. Afr. J. Antarc. Res.* 1: 35

1972

- ALBERTS HW *see* Van der Walt AJ, PH Stoker & HW Alberts 1972. Latitude distribution of cosmic rays at sea level from 1963 to 1970. *S. Afr. J. Antarc. Res.* 2: 48-52
- AUCAMP APH 1972. The geology of Grunehogna, Ahlmannryggen, western Dronning Maud Land. *S. Afr.*

J. Antarc. Res. 2: 16-22

- GLEDHILL JA *see* Greener JG & JA Gledhill 1972. Electron fluxes observed near Sanae, Antarctica, by the satellite Alouette I during 1962-3. *S. Afr. J. Antarc. Res.* 2: 35-39
- GREENER JG & GLEDHILL JA 1972. Electron fluxes observed near Sanae, Antarctica, by the satellite Alouette I during 1962-3. *S. Afr. J. Antarc. Res.* 2: 35-39
- KÜHN GJ & SUTCLIFFE PR 1972. Evidence of a phase reversal in the quiet day variation of the magnetic vertical intensity at Marion Island. *S. Afr. J. Antarc. Res.* 2: 45-48
- NEETHLING DC 1972. South African Antarctic Earth Science Programme 1959-1969: Solid earth geophysics, oceanography and glaciology. *S. Afr. J. Antarc. Res.* 2: 2-15
- SCHAEFER TG 1972. Radio echo sounding in western Dronning Maud Land, 1971 - a preview. *S. Afr. J. Antarc. Res.* 2: 53-56
- STOKER PH *see* Van der Walt AJ, PH Stoker & HW Alberts 1972. Latitude distribution of cosmic rays at sea level from 1963 to 1970. *S. Afr. J. Antarc. Res.* 2: 48-52
- SUTCLIFFE PR *see* Kühn GJ & PR Sutcliffe 1972. Evidence of a phase reversal in the quiet day variation of the magnetic vertical intensity at Marion Island. *S. Afr. J. Antarc. Res.* 2: 45-48
- TORR DG & TORR MR 1972. Problems in explaining the behaviour of the F1 layer. *S. Afr. J. Antarc. Res.* 2: 40-44
- TORR DG *see* Torr MR & DG Torr 1972. Ionization enhancements in the post-midnight hours at some Antarctic stations and the diurnal excursion of the auroral oval. *S. Afr. J. Antarc. Res.* 2: 32-34
- TORR MR & TORR DG 1972. Ionization enhancements in the post-midnight hours at some Antarctic stations and the diurnal excursion of the auroral oval. *S. Afr. J. Antarc. Res.* 2: 32-34
- TORR MR *see* Torr DG & MR Torr 1972. Problems in explaining the behaviour of the F1 layer. *S. Afr. J. Antarc. Res.* 2: 40-44
- VAN DER WALT AJ, STOKER PH & ALBERTS HW 1972. Latitude distribution of cosmic rays at sea level from 1963 to 1970. *S. Afr. J. Antarc. Res.* 2: 48-52
- WATTERS BR 1972. The Straumsnutane Volcanics, western Dronning Maud Land. *S. Afr. J. Antarc. Res.* 2: 23-31

1973

- BREDELL JH 1973. The geology of the Nashornet - Viddalskollen area, western Dronning Maud Land. *S. Afr. J. Antarc. Res.* 3: 2-10
- BREDELL JH 1973. Ten-metre snow studies at Grunehogna Base, western Dronning Maud Land. *S. Afr. J. Antarc. Res.* 3: 16-21

- CROOME RL 1973. Nitrogen fixation in the algal mires on Marion Island. *S. Afr. J. Antarc. Res.* 3: 64-67
- DU PLESSIS A 1973. Temperature profiles obtained from boreholes on the ice shelf in the vicinity of Sanae, western Dronning Maud Land. *S. Afr. J. Antarc. Res.* 3: 11-15
- GLEDHILL JA 1973. Horizontal heat conduction during electron precipitation into the upper atmosphere. *S. Afr. J. Antarc. Res.* 3: 33-37
- KRIEL JN, MISCHKE CFW & STOKER PH 1973. The effect of the rising snow level on the counting rate of the Sanae neutron monitor. *S. Afr. J. Antarc. Res.* 3: 42-44
- KÜHN GJ & SUTCLIFFE PR 1973. Some aspects of Sq at Sanae. *S. Afr. J. Antarc. Res.* 3: 26-32
- MISCHKE CFW *see* Kriel JN, CFW Mischke & PH Stoker 1973. The effect of the rising snow level on the counting rate of the Sanae neutron monitor. *S. Afr. J. Antarc. Res.* 3: 42-44
- MISCHKE CFW *see* Stoker PH & CFW Mischke 1973. The use of the neutron moderated detector for analysing cosmic ray events. *S. Afr. J. Antarc. Res.* 3: 38-41
- SCHAEFER TG 1973. Radio echo sounding in western Dronning Maud Land, 1971. *S. Afr. J. Antarc. Res.* 3: 45-52
- STOKER PH & MISCHKE CFW 1973. The use of the neutron moderated detector for analysing cosmic ray events. *S. Afr. J. Antarc. Res.* 3: 38-41
- STOKER PH *see* Kriel JN, CFW Mischke & PH Stoker 1973. The effect of the rising snow level on the counting rate of the Sanae neutron monitor. *S. Afr. J. Antarc. Res.* 3: 42-44
- SUTCLIFFE PR 1973. Pulsation phenomena observed during a magnetospheric substorm at Sanae. *S. Afr. J. Antarc. Res.* 3: 22-25
- SUTCLIFFE PR *see* Kühn GJ & PR Sutcliffe 1973. Some aspects of Sq at Sanae. *S. Afr. J. Antarc. Res.* 3: 26-32
- VAN ZYL RB 1973. Radio echo sounding in western Dronning Maud Land, 1972. *S. Afr. J. Antarc. Res.* 3: 53-59
- VAN ZINDEREN BAKKER EM 1973. The second South African Biological Expedition to Marion Island, 1971-72. *S. Afr. J. Antarc. Res.* 3: 60-63

1974

- ANDERSON GD & CONDY PR 1974. A note on the feral house cat and house mouse on Marion Island. *S. Afr. J. Antarc. Res.* 4: 58-61
- CONDY PR *see* Anderson GD & PR Condy 1974. A note on the feral house cat and house mouse on Marion Island. *S. Afr. J. Antarc. Res.* 4: 58-61
- DEANE KF *see* Walker ADM & KF Deane 1974. Methods of scaling whistlers in the absence of the initiating spheric and nose frequency. *S. Afr. J. Antarc. Res.*

4: 27-30

- GLEDHILL JA *see* Haschick AD & JA Gledhill 1974. Ionization of the E region of the ionosphere by precipitated electrons. *S. Afr. J. Antarc. Res.* 4: 16-22
- GROBBELAAR JU 1974. Primary production in freshwater bodies of the Sub-Antarctic Island Marion. *S. Afr. J. Antarc. Res.* 4: 40-45
- HALL-MARTIN AJ 1974. Observations on population density and species composition of seals in the King Haakon VII Sea, Antarctica. *S. Afr. J. Antarc. Res.* 4: 34-39
- HASCHICK AD & GLEDHILL JA 1974. Ionization of the E region of the ionosphere by precipitated electrons. *S. Afr. J. Antarc. Res.* 4: 16-22
- KÜHN GJ 1974. Observations of auroral pulsations at Sanae. *S. Afr. J. Antarc. Res.* 4: 46-49
- LINSCOTT GR *see* Scourfield MWJ & GR Linscott 1974. A television system for auroral cinematography at Sanae, Antarctica. *S. Afr. J. Antarc. Res.* 4: 31-33
- SCHÖNFELD SG & VAN ZYL CZ 1974. Geophysical traverses in the Ahlmannryggen, western Dronning Maud Land 1973. *S. Afr. J. Antarc. Res.* 4: 50-57
- SCOURFIELD MWJ & LINSCOTT GR 1974. A television system for auroral cinematography at Sanae, Antarctica. *S. Afr. J. Antarc. Res.* 4: 31-33
- VAN ZYL CZ 1974. The geology of Istind, western Dronning Maud Land, and the relationship between the Istind and Tindeklypa Formations. *S. Afr. J. Antarc. Res.* 4: 2-5
- VAN ZYL CZ 1974. Cross-bedding and palaeocurrents in the Ahlmannryggen, western Dronning Maud Land. *S. Afr. J. Antarc. Res.* 4: 6-10
- VAN ZYL CZ 1974. Studies on ten-metre firn temperatures, moraines and blue ice fields in western Dronning Maud Land. *S. Afr. J. Antarc. Res.* 4: 11-15
- VAN ZYL CZ *see* Schönfeld SG & CZ van Zyl 1974. Geophysical traverses in the Ahlmannryggen, western Dronning Maud Land 1973. *S. Afr. J. Antarc. Res.* 4: 50-57
- WALKER ADM & DEANE KF 1974. Methods of scaling whistlers in the absence of the initiating spheric and nose frequency. *S. Afr. J. Antarc. Res.* 4: 27-30
- WILLIAMS MH 1974. The transition between LT- and UT-controlled behaviour of Antarctic foF2. *S. Afr. J. Antarc. Res.* 4: 23-26

1975

- BARNARD HP 1975. Radio echo sounding in western Dronning Maud Land, 1974. *S. Afr. J. Antarc. Res.* 5: 37-41
- BERRUTI A *see* Williams AJ, AE Burger, A Berruti & WR Siegfried 1975. Ornithological research on Marion Island, 1974-75. *S. Afr. J. Antarc. Res.* 5: 48-50
- BERRUTI A, BURGER AE, WILLIAMS AJ & SIEGFRIED WR 1975. Bird ringing on Marion Island. *S. Afr. J. Antarc. Res.* 5: 50-52

- BESTER MN *see* Condy PR & M.Bester 1975. Notes on the tagging of seals at Marion and Gough Islands. *S. Afr. J. Antarc. Res.* 5: 45-47
- BOWERS BG *see* Minnaar HFB, PJ König, PH Stoker & BG Bowers 1975. An electron precipitation event recorded at Sanae on 14 November 1974. *S. Afr. J. Antarc. Res.* 5: 13-15
- BURGER AE *see* Williams AJ, AE Burger, A Berruti & WR Siegfried 1975. Ornithological research on Marion Island, 1974-75. *S. Afr. J. Antarc. Res.* 5: 48-50
- BURGER AE *see* Berruti A, AE Burger, AJ Williams & WR Siegfried 1975. Bird ringing on Marion Island. *S. Afr. J. Antarc. Res.* 5: 50-52
- CONDY PR & BESTER MN 1975. Notes on the tagging of seals at Marion and Gough Islands. *S. Afr. J. Antarc. Res.* 5: 45-47
- ERASMUS JM *see* Gavshon RDJ & JM Erasmus 1975. Precambrian metamorphic rocks of the Neumayerskarvet area, Kirwanveggen, western Dronning Maud Land. *S. Afr. J. Antarc. Res.* 5: 2-9
- GAVSHON RDJ & ERASMUS JM 1975. Precambrian metamorphic rocks of the Neumayerskarvet area, Kirwanveggen, western Dronning Maud Land. *S. Afr. J. Antarc. Res.* 5: 2-9
- GLEDHILL JA 1975. The International Magnetospheric Study (IMS) and the Antarctic and Southern Hemisphere Aeronomy Year (ASHAY). *S. Afr. J. Antarc. Res.* 5: 53-56
- GREMMEN NJM 1975. The distribution of alien vascular plants on Marion and Prince Edward Islands. *S. Afr. J. Antarc. Res.* 5: 25-30
- HUGHES ARW 1975. Diurnal variation of ELF and VLF noise observed on a low-altitude satellite at the invariant latitude of Sanae. *S. Afr. J. Antarc. Res.* 5: 10-12
- KÖNIG PJ *see* Minnaar HFB, PJ König, PH Stoker & BG Bowers 1975. An electron precipitation event recorded at Sanae on 14 November 1974. *S. Afr. J. Antarc. Res.* 5: 13-15
- MINNAAR HFB, KÖNIG PJ, STOKER PH & BOWERS BG 1975. An electron precipitation event recorded at Sanae on 14 November 1974. *S. Afr. J. Antarc. Res.* 5: 13-15
- SHAUGHNESSY PD 1975. Observations on the seals of Gough Island. *S. Afr. J. Antarc. Res.* 5: 42-44
- SIEGFRIED WR *see* Williams AJ, AE Burger, A Berruti & WR Siegfried 1975. Ornithological research on Marion Island, 1974-75. *S. Afr. J. Antarc. Res.* 5: 48-50
- SIEGFRIED WR *see* Berruti A, AE Burger, AJ Williams & WR Siegfried 1975. Bird ringing on Marion Island. *S. Afr. J. Antarc. Res.* 5: 50-52
- STOKER PH *see* Minnaar HFB, PJ König, PH Stoker & BG Bowers 1975. An electron precipitation event recorded at Sanae on 14 November 1974. *S. Afr. J. Antarc. Res.* 5: 13-15
- SUTCLIFFE PR 1975. A note on the morphology of Pi2 spectra. *S. Afr. J. Antarc. Res.* 5: 16-20
- VERMEULEN LP 1975. Die ontwikkeling van 'n kriterium vir aanpassing by Antarktiese toestande. *S. Afr. J. Antarc. Res.* 5: 21-24
- WILLIAMS AJ, BURGER AE, BERRUTI A & SIEGFRIED WR 1975. Ornithological research on Marion Island, 1974-75. *S. Afr. J. Antarc. Res.* 5: 48-50
- WILLIAMS AJ *see* Berruti A, AE Burger, AJ Williams & WR Siegfried 1975. Bird ringing on Marion Island. *S. Afr. J. Antarc. Res.* 5: 50-52
- WILSON VJ 1975. A second survey of seals in the King Haakon VII Sea, Antarctica. *S. Afr. J. Antarc. Res.* 5: 31-36
- 1976**
- BEST PB *see* Frost PGH & PB Best 1976. Design and application of a coded format for recording observations of cetaceans at sea. *S. Afr. J. Antarc. Res.* 6: 9-14
- CONDY PR 1976. Results of the Third Seal Survey in the King Haakon VII Sea, Antarctica. *S. Afr. J. Antarc. Res.* 6: 2-8
- CONROY JWH *see* Johnstone GW, PD Shaughnessy & JWH Conroy 1976. Giant-petrels in the South Atlantic: new data from Gough Island. *S. Afr. J. Antarc. Res.* 6: 19-22
- COOPER J 1976. Season and spatial distribution of the Antarctic Tern in South Africa. *S. Afr. J. Antarc. Res.* 6: 30-32
- DE VILLIERS AF 1976. Littoral ecology of Marion and Prince Edward Islands (Southern Ocean). *S. Afr. J. Antarc. Res.* Supplement 1: 1-40
- FAIRALL N *see* Shaughnessy PD & N Fairall 1976. Notes on seabirds at Gough Island. *S. Afr. J. Antarc. Res.* 6: 23-25
- FROST PGH & BEST PB 1976. Design and application of a coded format for recording observations of cetaceans at sea. *S. Afr. J. Antarc. Res.* 6: 9-14
- FROST PGH, GRINDLEY JR & WOOLDRIDGE TH 1976. Report on South Africa (sic) participation in cruise MD08 of M S *Marion Dufresne*, March-April 1976. *S. Afr. J. Antarc. Res.* 6: 28-29
- GLEDHILL JA *see* Haggard R & JA Gledhill 1976. Observations of the ionosphere over the South Atlantic Ocean. *S. Afr. J. Antarc. Res.* 6: 14-18
- GRINDLEY JR *see* Frost PGH, JR Grindley & TH Wooldridge 1976. Report on South Africa (sic) participation in cruise MD08 of M S *Marion Dufresne*, March-April 1976. *S. Afr. J. Antarc. Res.* 6: 28-29
- HAGGARD R & GLEDHILL JA 1976. Observations of the ionosphere over the South Atlantic Ocean. *S. Afr. J. Antarc. Res.* 6: 14-18
- JOHNSTONE GW, SHAUGHNESSY PD & CONROY JWH 1976. Giant-petrels in the South Atlantic: new data from Gough Island. *S. Afr. J. Antarc. Res.* 6: 19-22
- POTGIETER TI *see* Taljaard JJ & TI Potgieter 1976. Surface temperature and sea-level pressure at Norway Station and Sanae. *S. Afr. J. Antarc. Res.* 6: 26-28
- SHAUGHNESSY PD & FAIRALL N 1976. Notes on seabirds at Gough Island. *S. Afr. J. Antarc. Res.* 6: 23-25
- SHAUGHNESSY PD *see* Johnstone GW, PD Shaughnessy & JWH Conroy 1976. Giant-petrels in the South Atlantic: new data from Gough Island. *S. Afr. J. Antarc. Res.* 6: 19-22
- SUTCLIFFE PR 1976. A note on the daily variation of the geomagnetic vertical intensity at Marion Island. *S. Afr. J. Antarc. Res.* 6: 32-34
- TALJAARD JJ & POTGIETER TI 1976. Surface temperature and sea-level pressure at Norway Station and Sanae. *S. Afr. J. Antarc. Res.* 6: 26-28
- WOOLDRIDGE TH *see* Frost PGH, JR Grindley & TH Wooldridge 1976. Report on South Africa (sic) participation in cruise MD08 of M S *Marion Dufresne*, March-April 1976. *S. Afr. J. Antarc. Res.* 6: 28-29
- 1977**
- BURGER AE & MORANT PD 1977. Bird ringing on Marion Island, 1975-1977. *S. Afr. J. Antarc. Res.* 7: 26-27
- CONDY PR 1977. Whale observations in the pack ice off the Fimbul Ice Shelf, Antarctica. *S. Afr. J. Antarc. Res.* 7: 7-9
- CONDY PR 1977. Results of the fourth seal survey in the King Haakon VII Sea, Antarctica. *S. Afr. J. Antarc. Res.* 7: 10-13
- CRAMD L & MALAN OG 1977. On the possibility of surveying krill (*Euphausia dana*) in the Southern Ocean by remote sensing. *S. Afr. J. Antarc. Res.* 7: 14-19
- HALL K 1977. Some observations on the former sea levels of Marion Island. *S. Afr. J. Antarc. Res.* 7: 19-22
- KOK OB 1977. Lentic water types of Marion and Prince Edward Islands with comments on their zooplankton. *S. Afr. J. Antarc. Res.* 7: 2-7
- MALAN OG *see* Cram DL & OG Malan 1977. On the possibility of surveying krill (*Euphausia dana*) in the Southern Ocean by remote sensing. *S. Afr. J. Antarc. Res.* 7: 14-19
- MORANT PD 1977. Bird ringing at Tristan da Cunha and Gough Islands, 1937-1977. *S. Afr. J. Antarc. Res.* 7: 23-26
- MORANT PD *see* Burger A. & PD Morant 1977. Bird ringing on Marion Island, 1975-1977. *S. Afr. J. Antarc. Res.* 7: 26-27
- SMITH VR 1977. The chemical composition of Marion Island soils, plants and vegetation. *S. Afr. J. Antarc. Res.* 7: 28-39
- 1978**
- BERRUTI A & HARCUS T 1978. Cephalopod prey of the sooty albatrosses *Phoebetria fusca* and *P. palpebrata* at Marion Island. *S. Afr. J. Antarc. Res.* 8: 99-103
- BERRUTI A *see* Williams AJ & A Berruti 1978. Mineral and energy contributions of feathers moulted by penguins, gulls and cormorants to the Marion Island terrestrial ecosystem. *S. Afr. J. Antarc. Res.* 8: 71-75
- BERUTTI A *see* Williams AJ, AE Burger & A Berruti 1978. Mineral and energy contributions of carcasses of selected species of seabirds to the Marion Island terrestrial ecosystem. *S. Afr. J. Antarc. Res.* 8: 53-59
- BERRUTI A *see* Siegfried WR, AJ Williams, AE Burger & A Berruti 1978. Mineral and energy contributions of selected species of seabirds to the Marion Island terrestrial ecosystem. *S. Afr. J. Antarc. Res.* 8: 75-87
- BESTER MN *see* Skinner JD, PR Condy, RJ van Aarde, MN Bester & TJ Robinson 1978. The mammals of Marion Island: a review. *S. Afr. J. Antarc. Res.* 8: 35-38
- BURGER AE 1978. Terrestrial invertebrates: a food resource for birds at Marion Island. *S. Afr. J. Antarc. Res.* 8: 87-99
- BURGER AE, LINDEBOOM HJ & WILLIAMS AJ 1978. Mineral and energy contributions of guano of selected species of birds to the Marion Island terrestrial ecosystem. *S. Afr. J. Antarc. Res.* 8: 59-70
- BURGER AE *see* Williams AJ, AE Burger & A Berruti 1978. Mineral and energy contributions of carcasses of selected species of seabirds to the Marion Island terrestrial ecosystem. *S. Afr. J. Antarc. Res.* 8: 53-59
- BURGER AE *see* Siegfried WR, AJ Williams, AE Burger & A Berruti 1978. Mineral and energy contributions of selected species of seabirds to the Marion Island terrestrial ecosystem. *S. Afr. J. Antarc. Res.* 8: 75-87
- CONDY PR 1978. The distribution and abundance of southern elephant seals *Mirounga leonina* (Linn.) on the Prince Edward islands. *S. Afr. J. Antarc. Res.* 8: 42-48
- CONDY PR *see* Skinner JD, PR Condy, RJ van Aarde, MN Bester & TJ Robinson 1978. The mammals of Marion Island: a review. *S. Afr. J. Antarc. Res.* 8: 35-38
- GRINDLEY JR 1978. Marine ecosystems of Marion Island. *S. Afr. J. Antarc. Res.* 8: 38-42
- GROBBELAAR JU 1978. The limnology of Marion Island: Southern Indian Ocean. *S. Afr. J. Antarc. Res.* 8: 113-118
- HARCUS T *see* Berruti A & T Harcus 1978. Cephalopod prey of the sooty albatrosses *Phoebetria fusca* and *P. palpebrata* at Marion Island. *S. Afr. J. Antarc. Res.* 8: 99-103
- LAWS RM 1978. Ecological studies at South Georgia. *S. Afr. J. Antarc. Res.* 8: 3-13
- LINDEBOOM HJ *see* Burger AE, HJ Lindeboom &

AJ Williams 1978. Mineral and energy contributions of guano of selected species of birds to the Marion Island terrestrial ecosystem. *S. Afr. J. Antarc. Res.* 8: 59-70
ROBINSON TJ *see* Skinner JD, PR Condy, RJ van Aarde, MN Bester & TJ Robinson 1978. The mammals of Marion Island: a review. *S. Afr. J. Antarc. Res.* 8: 35-38
SIEGFRIED WR 1978. Ornithological research at the Prince Edward islands: a review of progress. *S. Afr. J. Antarc. Res.* 8: 30-34
SIEGFRIED WR, WILLIAMS AJ, BURGER AE & BERRUTI A 1978. Mineral and energy contributions of eggs of selected species of seabirds to the Marion Island terrestrial ecosystem. *S. Afr. J. Antarc. Res.* 8: 75-87
SKINNER JD, CONDY PR, VAN AARDE RJ, BESTER MN & ROBINSON TJ 1978. The mammals of Marion Island: a review. *S. Afr. J. Antarc. Res.* 8: 35-38
SMITH VR 1978. Plant ecology of Marion Island: a review. *S. Afr. J. Antarc. Res.* 8: 21-30
SMITH VR 1978. Standing crop and production estimates of selected Marion Island plant communities. *S. Afr. J. Antarc. Res.* 8: 103-105
SMITH VR 1978. Plant responses to osmotic stress in the coastal zone of Marion Island. *S. Afr. J. Antarc. Res.* 8: 106-113
VAN AARDE RJ *see* Skinner JD, P. Condy, RJ van Aarde, MN Bester & TJ Robinson 1978. The mammals of Marion Island: a review. *S. Afr. J. Antarc. Res.* 8: 35-38
VAN ZINDEREN BAKKER EM 1978. Origin and general ecology of the Marion Island ecosystem. *S. Afr. J. Antarc. Res.* 8: 13-21
WILLIAMS AJ 1978. Mineral and energy contributions of petrels (Procellariiformes) killed by cats, to the Marion Island terrestrial ecosystem. *S. Afr. J. Antarc. Res.* 8: 49-53
WILLIAMS AJ & BERRUTI A 1978. Mineral and energy contributions of feathers moulted by penguins, gulls and cormorants to the Marion Island terrestrial ecosystem. *S. Afr. J. Antarc. Res.* 8: 71-74
WILLIAMS AJ, BURGER AE & BERRUTI A 1978. Mineral and energy contributions of carcasses of selected species of seabirds to the Marion Island terrestrial ecosystem. *S. Afr. J. Antarc. Res.* 8: 53-59
WILLIAMS AJ *see* Burger AE, HJ Lindeboom & AJ Williams 1978. Mineral and energy contributions of guano of selected species of birds to the Marion Island terrestrial ecosystem. *S. Afr. J. Antarc. Res.* 8: 59-70
WILLIAMS AJ *see* Siegfried WR, AJ Williams, AE Burger & A Berruti 1978. Mineral and energy contributions of selected species of seabirds to the Marion Island terrestrial ecosystem. *S. Afr. J. Antarc. Res.* 8: 75-87

1979

AGENBAG JJ *see* Cram DL, JJ Agenbag, I Hampton & AA Robertson 1979. S A S Protea Cruise, 1978. The general results of the acoustics and remote sensing study, with recommendations for estimating the abundance of krill (*Euphasia superba* Dana). *S. Afr. J. Antarc. Res.* 9: 3-14
BESTER MN 1979. A note on winter seal observations in the South Atlantic pack ice. *S. Afr. J. Antarc. Res.* 9: 27-28
CONDY PR 1979. Observations on penguins in the King Haakon VII Sea, Antarctica. *S. Afr. J. Antarc. Res.* 9: 29-32
CONDY PR *see* Siegfried WR, PF Forbes & PR Condy 1979. Scientific research at the Prince Edward islands, 1847-1979: a bibliography. *S. Afr. J. Antarc. Res.* 9: 35-41
CRAM DL, AGENBAG JJ, HAMPTON I & ROBERTSON AA 1979. S A S Protea Cruise, 1978. The general results of the acoustics and remote sensing study, with recommendations for estimating the abundance of krill (*Euphasia superba* Dana). *S. Afr. J. Antarc. Res.* 9: 3-14
FORBES PF *see* Siegfried WR, PF Forbes & PR Condy 1979. Scientific research at the Prince Edward islands, 1847-1979: a bibliography. *S. Afr. J. Antarc. Res.* 9: 35-41
FROST PGH 1979. Seabird distribution and the transport of nutrients from marine to terrestrial ecosystems. *S. Afr. J. Antarc. Res.* 9: 20-27
HAMPTON I *see* Cram DL, JJ Agenbag, I Hampton & AA Robertson 1979. S A S Protea Cruise, 1978. The general results of the acoustics and remote sensing study, with recommendations for estimating the abundance of krill (*Euphasia superba* Dana). *S. Afr. J. Antarc. Res.* 9: 3-14
MALAN OG & VAN ZYL AS 1979. A digital mosaic of Antarctic Landsat images. *S. Afr. J. Antarc. Res.* 9: 32-34
ROBERTSON AA *see* Cram DL, JJ Agenbag, I Hampton & AA Robertson 1979. S A S Protea Cruise, 1978. The general results of the acoustics and remote sensing study, with recommendations for estimating the abundance of krill (*Euphasia superba* Dana). *S. Afr. J. Antarc. Res.* 9: 3-14
SIEGFRIED WR, FORBES PF & CONDY PR 1979. Scientific research at the Prince Edward islands, 1847-1979: a bibliography. *S. Afr. J. Antarc. Res.* 9: 35-41
VAN AARDE RJ 1979. Distribution and density of the feral house cat *Felis catus* on Marion Island. *S. Afr. J. Antarc. Res.* 9: 14-19
VAN ZYL AS *see* Malan OG & AS van Zyl 1979. A digital mosaic of Antarctic Landsat images. *S. Afr. J. Antarc. Res.* 9: 32-34

1981

ALLANSON BR, HART RC & LUTJEHARMS JRE 1981. Observations on the nutrients, chlorophyll and primary production of the Southern Ocean south of Africa. *S. Afr. J. Antarc. Res.* 10/11: 3-14
ASHTON PJ *see* Smith VR & PJ Ashton 1981. Bryophyte-cyanobacteria associations on sub-Antarctic Marion Island: are they important in nitrogen fixation? *S. Afr. J. Antarc. Res.* 10/11: 24-26
BERRUTI AA, GRIFFITHS AM, IMBER MJ, SCHRAMM M & SINCLAIR JC 1981. The status of seabirds at Prince Edward Island. *S. Afr. J. Antarc. Res.* 10/11: 31-32
BESTER MN 1981. Fur seals *Arctocephalus gazella* and leopard seals *Hydrurga leptonyx* at the Courbet Peninsula, Kerguelen. *S. Afr. J. Antarc. Res.* 10/11: 35-37
GREMMEN NJM & SMITH VR 1981. *Agrostis stolonifera* L. on Marion Island (sub-Antarctic). *S. Afr. J. Antarc. Res.* 10/11: 33-34
GRIFFITHS AM *see* Berruti A, AM Griffiths, MJ Imber, M Schramm & JS Sinclair 1981. The status of seabirds at Prince Edward Island. *S. Afr. J. Antarc. Res.* 10/11: 31-32
HALL KJ & WILLIAMS AJ 1981. Animals as agents of erosion at sub-Antarctic Marion Island. *S. Afr. J. Antarc. Res.* 10/11: 18-24
HART RC *see* Allanson BR, RC Hart & JRE Lutjeharms 1981. Observations on the nutrients, chlorophyll and primary production of the Southern Ocean south of Africa. *S. Afr. J. Antarc. Res.* 10/11: 3-14
IMBER MJ *see* Berruti A, AM Griffiths, MJ Imber, M Schramm & JC Sinclair 1981. The status of seabirds at Prince Edward Island. *S. Afr. J. Antarc. Res.* 10/11: 31-32
LAYCOCK PA *see* Williams AJ & PA Laycock 1981. Euphausiids in the diet of some sub-Antarctic *Eudyptes* penguins. *S. Afr. J. Antarc. Res.* 10/11: 27-28
LUTJEHARMS JRE *see* Allanson BR, RC Hart & JRE Lutjeharms 1981. Observations on the nutrients, chlorophyll and primary production of the Southern Ocean south of Africa. *S. Afr. J. Antarc. Res.* 10/11: 3-14
PANAGIS K 1981. Local movement of southern elephant sea pups *Mirounga leonina* (Linn.) at Marion Island. *S. Afr. J. Antarc. Res.* 10/11: 28-31
SCHRAMM M *see* Berruti A, AM Griffiths, MJ Imber, M Schramm & JC Sinclair 1981. The status of seabirds at Prince Edward Island. *S. Afr. J. Antarc. Res.* 10/11: 31-32
SINCLAIR JC *see* Berruti A, AM Griffiths, MJ Imber, M Schramm & JC Sinclair 1981. The status of seabirds at Prince Edward Island. *S. Afr. J. Antarc. Res.* 10/11: 31-32
SMITH VR & ASHTON PJ 1981. Bryophyte-cyanobacteria associations on sub-Antarctic Marion

Island: are they important in nitrogen fixation? *S. Afr. J. Antarc. Res.* 10/11: 24-26
SMITH VR *see* Gremmen NJM & VR Smith 1981. *Agrostis stolonifera* L. on Marion Island (sub-Antarctic). *S. Afr. J. Antarc. Res.* 10/11: 33-34
SMITH VR *see* Steyn MG & VR Smith 1981. Microbial populations in Marion Island soils. *S. Afr. J. Antarc. Res.* 10/11: 14-18
STEYN MG & SMITH VR 1981. Microbial populations in Marion Island soils. *S. Afr. J. Antarc. Res.* 10/11: 14-18
WATKINS BP 1981. Seabird observations at Bouvet Island. *S. Afr. J. Antarc. Res.* 10/11: 38-40
WILLIAMS AJ & LAYCOCK PA 1981. Euphausiids in the diet of some sub-Antarctic *Eudyptes* penguins. *S. Afr. J. Antarc. Res.* 10/11: 27-28
WILLIAMS AJ *see* Hall KJ & AJ Williams 1981. Animals as agents of erosion at sub-Antarctic Marion Island. *S. Afr. J. Antarc. Res.* 10/11: 18-24

1982

APPS P *see* Panagis K, P Apps & MH Knight 1982. Seal Finger: occurrence in Antarctica. *S. Afr. J. Antarc. Res.* 12: 49
BESTER MN & LENGART P-Y 1982. An analysis of the southern elephant seal *Mirounga leonina* breeding population at Kerguelen. *S. Afr. J. Antarc. Res.* 12: 11-16
BROWN CR & OATLEY TB 1982. Bird ringing at Marion and Prince Edward islands, 1977-1982. *S. Afr. J. Antarc. Res.* 12: 45-48
GLEESON JP & VAN RENSBURG PJJ 1982. Feeding ecology of the house mouse *Mus musculus* on Marion Island. *S. Afr. J. Antarc. Res.* 12: 34-39
IMBER MJ *see* Williams AJ & MJ Imber 1982. Ornithological observations at Gough Island in 1979, 1980 and 1981. *S. Afr. J. Antarc. Res.* 12: 40-45
KENT LE *see* Wolmarans LG & LE Kent 1982. Geological investigations in Western Dronning Maud Land, Antarctica - a synthesis. *S. Afr. J. Antarc. Res. Supplement 2*: 4-93, plates
KNIGHT MH *see* Panagis K, P Apps & MH Knight 1982. Seal Finger: occurrence in Antarctica. *S. Afr. J. Antarc. Res.* 12: 49
LENGART P-Y *see* Bester MN & P-Y Lengart 1982. An analysis of the southern elephant seal *Mirounga leonina* breeding population at Kerguelen. *S. Afr. J. Antarc. Res.* 12: 11-16
MILLER DGM 1982. Cannibalism in *Euphasia superba* Dana. *S. Afr. J. Antarc. Res.* 12: 50
MILLER DGM 1982. Results of a combined hydroacoustic and midwater trawling survey of the Prince Edward Island group. *S. Afr. J. Antarc. Res.* 12: 3-10
MILLER DGM 1982. Results of a combined

hydroacoustic and midwater trawling survey of the Gough Island region. *S. Afr. J. Antarc. Res.* 12: 17-22
MILLER DGM & TROMP BBS 1982. The hydrology of waters close to Gough Island. *S. Afr. J. Antarc. Res.* 12: 23-33
OATLEY TB *see* Brown CR & TB Oatley 1982. Bird ringing at Marion and Prince Edward islands, 1977-1982. *S. Afr. J. Antarc. Res.* 12: 45-48
PANAGIS K, APPS P & KNIGHT MH 1982. Seal Finger: occurrence in Antarctica. *S. Afr. J. Antarc. Res.* 12: 49
TROMP BBS *see* Miller DGM & BBS Tromp 1982. The hydrology of waters close to Gough Island. *S. Afr. J. Antarc. Res.* 12: 23-33
VAN RENSBURG PJJ *see* Gleeson JP & PJJ van Rensburg 1982. Feeding ecology of the house mouse *Mus musculus* on Marion Island. *S. Afr. J. Antarc. Res.* 12: 34-39
WILLIAMS AJ & IMBER MJ 1982. Ornithological observations at Gough Island in 1979, 1980 and 1981. *S. Afr. J. Antarc. Res.* 12: 40-45
WOLMARANS LG & KENT LE 1982. Geological investigations in Western Dronning Maud Land, Antarctica - a synthesis. *S. Afr. J. Antarc. Res. Supplement* 2: 4-93, plates

1983

ABRAMS RW 1983. Distribution of seabirds in the African sector of FIBEX. *S. Afr. J. Antarc. Res.* 13: 24-28
ALLEN AR *see* Krynauw JR, AR Allen, SH Auret & V von Brunn 1983. A note on breeding sites of snow petrels (*Pagodroma nivea*) at Robertskollen, Boreas and Passat nunataks and Johnsbrotet, western Dronning Maud Land, Antarctica. *S. Afr. J. Antarc. Res.* 13: 51-53.
AURET SH *see* Krynauw JR, AR Allen, SH Auret & V von Brunn 1983. A note on breeding sites of snow petrels (*Pagodroma nivea*) at Robertskollen, Boreas and Passat nunataks and Johnsbrotet, western Dronning Maud Land, Antarctica. *S. Afr. J. Antarc. Res.* 13: 51-53
COOPER J 1983. Bird ringing at Gough Island, 1977-1982. *S. Afr. J. Antarc. Res.* 13: 47-48
COOPER J *see* Watkins BP & J Cooper 1983. Scientific research at Gough Island, 1869-1982: a bibliography. *S. Afr. J. Antarc. Res.* 13: 54-58
EMERY WJ *see* Lutjeharms JRE & WJ Emery 1983. The detailed thermal structure of the upper ocean layers between Cape Town and Antarctica during the period Jan.-Feb. 1978. *S. Afr. J. Antarc. Res.* 13: 3-14
FRENCH DD & SMITH VR 1983. A note on the feeding of *Pringleophaga marioni* Vietti larvae at Marion Island. *S. Afr. J. Antarc. Res.* 13: 45-46
GRIBNITZ K-H *see* Kent LE & K-H Gribnitz 1983.

Problematical Quaternary successions on Marion Island: volcanogenic or glacial? *S. Afr. J. Antarc. Res.* 13: 15-23
HALL K 1983. Observations of some periglacial features and their palaeoenvironmental implications on sub-Antarctic islands Marion and Kerguelen. *S. Afr. J. Antarc. Res.* 13: 35-40
HES AD & ROUX J-P 1983. Population increase in the sub-Antarctic fur seal *Arctocephalus tropicalis* at Amsterdam Island. *S. Afr. J. Antarc. Res.* 13: 29-34
KENT LE & GRIBNITZ K-H 1983. Problematical Quaternary successions on Marion Island: volcanogenic or glacial? *S. Afr. J. Antarc. Res.* 13: 15-23
KRYNAUW JR, ALLEN AR, AURET SH & VON BRUNN V 1983. A note on breeding sites of snow petrels (*Pagodroma nivea*) at Robertskollen, Boreas and Passat nunataks and Johnsbrotet, western Dronning Maud Land, Antarctica. *S. Afr. J. Antarc. Res.* 13: 51-53
LUTJEHARMS JRE & EMERY WJ 1983. The detailed thermal structure of the upper ocean layers between Cape Town and Antarctica during the period Jan.-Feb. 1978. *S. Afr. J. Antarc. Res.* 13: 3-14
RANDALL BM, RANDALL RM & ROSSOUW GJ 1983. Plastic particle pollution in great shearwaters (*Puffinus gravis*) from Gough Island. *S. Afr. J. Antarc. Res.* 13: 49-50
RANDALL RM *see* Randall BM, RM Randall & GJ Rossouw 1983. Plastic particle pollution in great shearwaters (*Puffinus gravis*) from Gough Island. *S. Afr. J. Antarc. Res.* 13: 49-50
ROSSOUW GJ *see* Randall BM, RM Randall & GJ Rossouw 1983. Plastic particle pollution in great shearwaters (*Puffinus gravis*) from Gough Island. *S. Afr. J. Antarc. Res.* 13: 49-50
ROUX J-P *see* Hes AD & J-P Roux 1983. Population increase in the sub-Antarctic fur seal *Arctocephalus tropicalis* at Amsterdam Island. *S. Afr. J. Antarc. Res.* 13: 29-34
SCHRAMM M 1983. Predation by subantarctic skuas *Catharacta antarctica* on burrowing petrels at Marion Island. *S. Afr. J. Antarc. Res.* 13: 41-44
SMITH VR *see* French DD & VR Smith 1983. A note on the feeding of *Pringleophaga marioni* Vietti larvae at Marion Island. *S. Afr. J. Antarc. Res.* 13: 45-46
VON BRUNN V *see* Krynauw JR, AR Allen, SH Auret & V von Brunn 1983. A note on breeding sites of snow petrels (*Pagodroma nivea*) at Robertskollen, Boreas and Passat nunataks and Johnsbrotet, western Dronning Maud Land, Antarctica. *S. Afr. J. Antarc. Res.* 13: 51-53
WATKINS BP & COOPER J 1983. Scientific research at Gough Island, 1869-1982: a bibliography. *S. Afr. J. Antarc. Res.* 13: 54-58

1984

BODEN BP *see* Miller DGM, BP Boden & L Parker 1984. Hydrology and bio-oceanography of the Prince Edward Islands (south-west Indian Ocean). *S. Afr. J. Antarc. Res.* 14: 29-31
BROOKE M De L *see* Cooper J & M de L Brooke 1984. Breeding status of burrowing petrels at Prince Edward Island. *S. Afr. J. Antarc. Res.* 14: 34-35
COOPER J & BROOKE M De L 1984. Breeding status of burrowing petrels at Prince Edward Island. *S. Afr. J. Antarc. Res.* 14: 34-35
COOPER J, ENTICOTT JW, HECHT T & KLAGES N 1984. Prey from three chinstrap penguins *Pygoscelis antarctica* at Bouvet Island, December 1982. *S. Afr. J. Antarc. Res.* 14: 32-33
COOPER J *see* Watkins BP, J Cooper & IP Newton 1984. Scientific research at Bouvet Island, 1785-1983: a bibliography. *S. Afr. J. Antarc. Res.* 14: 36-39
COOPER J *see* Watkins BP, J Cooper & IP Newton 1984. Research into the natural sciences at the Tristan da Cunha islands, 1719-1983: a bibliography. *S. Afr. J. Antarc. Res.* 14: 40-47
CRAFFORD JE 1984. Life-cycle and kelp consumption of *Paractora dreuxi mirabilis* (Diptera: Helcomyzidae): A primary decomposer of stranded kelp on Marion Island. *S. Afr. J. Antarc. Res.* 14: 18-22
ENTICOTT JW *see* Cooper J, JW Enticott, T Hecht & N Klages 1984. Prey from three chinstrap penguins *Pygoscelis antarctica* at Bouvet Island, December 1982. *S. Afr. J. Antarc. Res.* 14: 32-33
HECHT T *see* Cooper J, JW Enticott, T Hecht & N Klages 1984. Prey from three chinstrap penguins *Pygoscelis antarctica* at Bouvet Island, December 1982. *S. Afr. J. Antarc. Res.* 14: 32-33
HILMER T *see* Smith VR & T Hilmer 1984. Bacterial numbers in the freshwater bodies of a sub-Antarctic island. *S. Afr. J. Antarc. Res.* 14: 23-26
HUNTER DR *see* Krynauw JR, DR Hunter & AH Wilson 1984. A note on the layered intrusions at Annandagstoppane and Juletoppane, Western Dronning Maud Land. *S. Afr. J. Antarc. Res.* 14: 2-10
KLAGES N *see* Cooper J, JW Enticott, T Hecht & N Klages 1984. Prey from three chinstrap penguins *Pygoscelis antarctica* at Bouvet Island, December 1982. *S. Afr. J. Antarc. Res.* 14: 32-33
KRYNAUW JR, HUNTER DR & WILSON AH 1984. A note on the layered intrusions at Annandagstoppane and Juletoppane, Western Dronning Maud Land. *S. Afr. J. Antarc. Res.* 14: 2-10
MILLER DGM, BODEN BP & PARKER L 1984. Hydrology and bio-oceanography of the Prince Edward Islands (south-west Indian Ocean). *S. Afr. J. Antarc. Res.* 14: 29-31
NEWTON IP *see* Watkins BP, J Cooper & IP Newton 1984. Scientific research at Bouvet Island, 1785-1983:

a bibliography. *S. Afr. J. Antarc. Res.* 14: 36-39
NEWTON IP *see* Watkins BP, J Cooper & IP Newton 1984. Research into the natural sciences at the Tristan da Cunha islands, 1719-1983: a bibliography. *S. Afr. J. Antarc. Res.* 14: 40-47
PARKER L *see* Miller DGM, BP Boden & L Parker 1984. Hydrology and bio-oceanography of the Prince Edward Islands (south-west Indian Ocean). *S. Afr. J. Antarc. Res.* 14: 29-31
SMITH VR & HILMER T 1984. Bacterial numbers in the freshwater bodies of a sub-Antarctic island. *S. Afr. J. Antarc. Res.* 14: 23-26
SMITH VR 1984. The effect of glucose, P, Co and Mo on heterotrophic acetylene reduction in a sub-Antarctic peat. *S. Afr. J. Antarc. Res.* 14: 27-28
VOISIN J-F 1984. Observations on the birds and mammals of île aux Cochons, Crozet Islands, in February 1982. *S. Afr. J. Antarc. Res.* 14: 11-17
WATKINS BP, COOPER J & NEWTON IP 1984. Scientific research at Bouvet Island, 1785-1983: a bibliography. *S. Afr. J. Antarc. Res.* 14: 36-39
WATKINS BP, COOPER J & NEWTON IP 1984. Research into the natural sciences at the Tristan da Cunha islands, 1719-1983: a bibliography. *S. Afr. J. Antarc. Res.* 14: 40-47
WILSON AH *see* Krynauw JR, DR Hunter & AH Wilson 1984. A note on the layered intrusions at Annandagstoppane and Juletoppane, Western Dronning Maud Land. *S. Afr. J. Antarc. Res.* 14: 2-10

1985

ALLANSON BR 1985. VII. Light, chlorophyll a and primary production. *S. Afr. J. Antarc. Res.* 15: 24-27
ALLANSON BR & BODEN BP 1985. Preliminary results of the South African SIBEX I Cruise to the Prydz Bay region, Antarctica, 15 March - 3 May 1984: Overall Résumé. *S. Afr. J. Antarc. Res.* 15: 3-5
ALLANSON BR & PARKER L 1985. I. Introduction, track charts and cruise description. *S. Afr. J. Antarc. Res.* 15: 6-7
BODEN BP 1985. VIII. The plankton encountered during the survey. *S. Afr. J. Antarc. Res.* 15: 28-32
BODEN BP *see* Allanson BR & BP Boden 1985. Preliminary results of the South African SIBEX I Cruise to the Prydz Bay region, Antarctica, 15 March - 3 May 1984: Overall Résumé. *S. Afr. J. Antarc. Res.* 15: 3-5
BRUNDRIT GB 1985. II. Temperature, salinity, and density overview. *S. Afr. J. Antarc. Res.* 15: 8-11
CHERRY MJ 1985. VI. Preliminary report on the naturally-occurring radioactive nuclide ²¹⁰Po in the Southern Ocean food chain. *S. Afr. J. Antarc. Res.* 15: 23
COOPER J 1985. XI. Distribution and abundance of birds at sea. *S. Afr. J. Antarc. Res.* 15: 53-55
DUNCOMBE-RAE C 1985. V. Nutrient analysis. *S. Afr. J. Antarc. Res.* 15: 20-22

HARALDSEN L *see* Orren MJ, PMS Monteiro & L Haraldsen 1985. IV. Silica, dissolved oxygen, and trace metals. *S. Afr. J. Antarc. Res.* 15: 19

LUCAS MI *see* Painting SJ, MI Lucas & JME Stenton-Dozey 1985. X. Biomass and production of bacterio-plankton in Prydz Bay, Antarctica: phytoplankton, detritus and bacterial relationships. *S. Afr. J. Antarc. Res.* 15: 42-52

LUTJEHARMS JRE 1985. III. Detail of the upper thermal structure of the Southern Ocean between South Africa and Prydz Bay during March - May 1984. *S. Afr. J. Antarc. Res.* 15: 12-18

MILLER DGM 1985. IX. Krill (*Euphausia superba* Dana). *S. Afr. J. Antarc. Res.* 15: 33-41

MONTEIRO PMS *see* Orren MJ, PMS Monteiro & L Haraldsen 1985. IV. Silica, dissolved oxygen, and trace metals. *S. Afr. J. Antarc. Res.* 15: 19

ORREN MJ, MONTEIRO PMS & HARALDSEN L 1985. IV. Silica, dissolved oxygen, and trace metals. *S. Afr. J. Antarc. Res.* 15: 19

PAINTING SJ, LUCAS MI & STENTON-DOZEY JME 1985. X. Biomass and production of bacterio-plankton in Prydz Bay, Antarctica: phytoplankton, detritus and bacterial relationships. *S. Afr. J. Antarc. Res.* 15: 42-52

PARKER L *see* Allanson BR & L Parker 1985. I. Introduction, track charts and cruise description. *S. Afr. J. Antarc. Res.* 15: 6-7

STENTON-DOZEY JME *see* Painting SJ, MI Lucas & JME Stenton-Dozey 1985. X. Biomass and production of bacterio-plankton in Prydz Bay, Antarctica: phytoplankton, detritus and bacterial relationships. *S. Afr. J. Antarc. Res.* 15: 42-52

1986

APPS PJ 1986. A case study of an alien predator (*Felis catus*) introduced on Dassen Island; selective advantages. *S. Afr. J. Antarc. Res.* 16(3): 118-122

BACON EJ *see* Monteiro PMS, EJ Bacon & MJ Orren 1986. The South African SIBEX I Cruise to the Prydz Bay region, 1984. Determination of photosynthetic pigments and their breakdown products by High Performance Liquid Chromatography. *S. Afr. J. Antarc. Res.* 16(1): 21-24

BERGH HW 1986. Seafloor spreading symmetry between Africa and Antarctica. *S. Afr. J. Antarc. Res.* 16(1): 9-12

BERRUTI A 1986. The predatory impact of feral cats *Felis catus* and their control on Dassen Island. *S. Afr. J. Antarc. Res.* 16(3): 123-127

BESTER MN & ROUX J-P 1986. Summer presence of leopard seals *Hydrurga leptonyx* at the Courbet peninsula, Iles Kerguelen. *S. Afr. J. Antarc. Res.* 16(1): 29-32

BESTER MN & ROUX J-P 1986. The second survey of Antarctic fur seals *Arctocephalus gazella* on the

Courbet Peninsula, Iles Kerguelen. *S. Afr. J. Antarc. Res.* 16(1): 33-38

BROOKE RK & PRINS AJ 1986. Review of alien species on South African offshore islands. *S. Afr. J. Antarc. Res.* 16(3): 102-109

COOPER J & FRASER MW 1986. Bird ringing at the Tristan da Cunha islands, 1982-1985. *S. Afr. J. Antarc. Res.* 16(1): 38-40

COOPER J *see* Watkins BP & J Cooper 1986. Introduction, present status and control of alien species at the Prince Edward islands, sub-Antarctic. *S. Afr. J. Antarc. Res.* 16(3): 86-94

CHOWN SL *see* Crafford JE, CH Scholtz & SL Chown 1986. The insects of sub-Antarctic Marion and Prince Edward Islands; with a bibliography of entomology of the Kerguelen biogeographical province. *S. Afr. J. Antarc. Res.* 16(2): 42-84

CRAFFORD JE 1986. A case study of an alien invertebrate (*Limnophyes pusillus*, Diptera, Chironomidae) introduced on Marion Island: Selective advantages. *S. Afr. J. Antarc. Res.* 16(3): 115-117

CRAFFORD JE, SCHOLTZ CH & CHOWN SL 1986. The insects of sub-Antarctic Marion and Prince Edward Islands; with a bibliography of entomology of the Kerguelen biogeographical province. *S. Afr. J. Antarc. Res. Supplement 2*: 42-84

DRENNAN PM *see* Smith VR, NM Pammenter & PM Drennan 1986. A case study of an alien vascular plant (*Agrostis stolonifera*) introduced on Marion Island. *S. Afr. J. Antarc. Res.* 16(3): 128

ENTICOTT JW 1986. Associations between seabirds and cetaceans in the African sector of the Southern Ocean. *S. Afr. J. Antarc. Res.* 16(1): 25-28

FOLDVIK A *see* Lutjeharms JRE & A Foldvik 1986. The thermal structure of the upper ocean layers between Africa and Antarctica during the period December 1978 to March 1979. *S. Afr. J. Antarc. Res.* 16(1): 13-20

FRASER MW *see* Cooper J & MW Fraser 1986. Bird ringing at the Tristan da Cunha islands, 1982-1985. *S. Afr. J. Antarc. Res.* 16(1): 38-40

LUTJEHARMS JRE 1986. Die wisselwerking tussen die Suidelike Oseaan en subtropiese sirkulasiekolke grensend aan Suider-Afrika - 'n Oorsig. *S. Afr. J. Antarc. Res.* 16(1): 2-8

LUTJEHARMS JRE & FOLDVIK A 1986. The thermal structure of the upper ocean layers between Africa and Antarctica during the period December 1978 to March 1979. *S. Afr. J. Antarc. Res.* 16(1): 13-20

MONTEIRO PMS, BACON EJ & ORREN MJ 1986. The South African SIBEX I Cruise to the Prydz Bay region, 1984. Determination of photosynthetic pigments and their breakdown products by High Performance Liquid Chromatography. *S. Afr. J. Antarc. Res.* 16(1): 21-24

ORREN MJ *see* Monteiro PMS, EJ Bacon & MJ Orren

1986. The South African SIBEX I Cruise to the Prydz Bay region, 1984. Determination of photosynthetic pigments and their breakdown products by High Performance Liquid Chromatography. *S. Afr. J. Antarc. Res.* 16(1): 21-24

PAMMENTER NM *see* Smith VR, NM Pammenter & PM Drennan 1986. A case study of an alien vascular plant (*Agrostis stolonifera*) introduced on Marion Island. *S. Afr. J. Antarc. Res.* 16(3): 1

PRINS AJ *see* Brooke RK & AJ Prins 1986. Review of alien species on South African offshore islands. *S. Afr. J. Antarc. Res.* 16(3): 102-109

ROUX J-P *see* Bester MN & J-P Roux 1986. Summer presence of leopard seals *Hydrurga leptonyx* at the Courbet peninsula, Iles Kerguelen. *S. Afr. J. Antarc. Res.* 16(1): 29-32

ROUX J-P *see* Bester MN & J-P Roux 1986. The second survey of Antarctic fur seals *Arctocephalus gazella* on the Courbet Peninsula, Iles Kerguelen. *S. Afr. J. Antarc. Res.* 16(1): 33-37

SCHOLTZ CH *see* Crafford JE, CH Scholtz & SL Chown 1986. The insects of sub-Antarctic Marion and Prince Edward Islands; with a bibliography of entomology of the Kerguelen biogeographical province. *S. Afr. J. Antarc. Res.* 16(2): 42-84

SMITH VR, PAMMENTER NM & DRENNAN PM 1986. A case study of an alien vascular plant (*Agrostis stolonifera*) introduced on Marion Island. *S. Afr. J. Antarc. Res.* 16(3): 128

VAN AARDERJ 1986. A case study of an alien predator (*Felis catus*) introduced on Marion Island: Selective advantages. *S. Afr. J. Antarc. Res.* 16(3): 113-114

VAN RENSBURG PJJ 1986. Control of the Marion Island cat (*Felis catus*) population: Why and how. *S. Afr. J. Antarc. Res.* 16(3): 110-112

WACE N 1986. The arrival, establishment and control of alien plants on Gough Island. *S. Afr. J. Antarc. Res.* 16(3): 95-101

WATKINS BP & COOPER J 1986. Introduction, present status and control of alien species at the Prince Edward islands, sub-Antarctic. *S. Afr. J. Antarc. Res.* 16(3): 86-94

1987

BUTTERWORTH DS & MILLER DGM 1987. A note on relating Antarctic krill catch-per-unit-effort measures to abundance trends. *S. Afr. J. Antarc. Res.* 17(2): 112-116

HECHT T 1987. A guide to the otoliths of Southern Ocean fishes. *S. Afr. J. Antarc. Res.* 17(1): 2-87

LE ROEX AP 1987. Crust-mantle evolution in the vicinity of the Bouvet Triple Junction - A synthesis. *S. Afr. J. Antarc. Res.* 17(2): 90-104

MILLER DGM 1987. The South African SIBEX II Cruise to the Prydz Bay region, 1985: Cruise descrip-

tion and preliminary review of results. *S. Afr. J. Antarc. Res.* 17(2): 105-111

MILLER DGM *see* Butterworth DS & DGM Miller 1987. A note on relating Antarctic krill catch-per-unit-effort measures to abundance trends. *S. Afr. J. Antarc. Res.* 17(2): 112-116.

RYAN PG 1987. The distribution, population size and foraging behaviour of Kerguelen terns at the Prince Edward Islands. *S. Afr. J. Antarc. Res.* 17(2): 163-166

SMITH VR 1987. Seasonal changes in plant and soil chemical composition at Marion Island (sub-Antarctic): I - Mire-grasslands. *S. Afr. J. Antarc. Res.* 17(2): 117-132

SMITH VR 1987. Seasonal changes in plant and soil chemical composition at Marion Island (sub-Antarctic): II - Fjaeldmark and fernbrakes. *S. Afr. J. Antarc. Res.* 17(2): 133-154

WATKINS BP 1987. Population sizes of king, rockhopper and macaroni penguins and wandering albatrosses at the Prince Edward Islands and Gough Island, 1951-1986. *S. Afr. J. Antarc. Res.* 17(2): 155-162

1988

BESTER MN *see* Wilkinson IS & MN Bester 1988. Is onshore human activity a factor in the decline of the southern elephant seal? *S. Afr. J. Antarc. Res.* 18(1): 14-17

COOPER J 1988. Bird ringing at Gough Island, 1982-1987; with an analysis of movements of wandering albatrosses. *S. Afr. J. Antarc. Res.* 18(1): 21-22

COOPER J *see* Gartshore NA, J Cooper & S Hunter 1988. Bird ringing at Marion and Price (sic) Edward Islands, 1982-1987; with an analysis of movements since 1951. *S. Afr. J. Antarc. Res.* 18(1): 23-29

GARTSHORE NA, COOPER J & HUNTER S 1988. Bird ringing at Marion and Price (sic) Edward Islands, 1982-1987; with an analysis of movements since 1951. *S. Afr. J. Antarc. Res.* 18(1): 23-29

GERDES D *see* Klages NTW & D Gerdes 1988. A little known colony of Emperor penguins on the coast of the eastern Weddell Sea. *S. Afr. J. Antarc. Res.* 18(1): 18-20

GON O 1988. The fishes collected during the South African SIBEX I + II expeditions to the Indian sector of the Southern Ocean (60-66°S, 48-64°E). *S. Afr. J. Antarc. Res.* 18(2): 55-70

GON O & KLAGES NTW 1988. The marine fish fauna of the sub-Antarctic Prince Edward Islands. *S. Afr. J. Antarc. Res.* 18(2): 32-54

GRANTHAM GH, GROENEWALD PB & HUNTER DR 1988. Geology of the northern H.U. Sverdrupfjella, western Dronning Maud Land and implications for Gondwana reconstructions. *S. Afr. J. Antarc. Res.* 18(1): 2-10

GROENEWALD PB *see* Grantham GH, PB

Groenewald & DR Hunter 1988. Geology of the northern HU Sverdrupfjella, western Dronning Maud Land and implications for Gondwana reconstructions. *S. Afr. J. Antarc. Res.* 18(1): 2-10

HUNTER DR *see* Grantham GH, PB Groenewald & DR Hunter 1988. Geology of the northern HU Sverdrupfjella, western Dronning Maud Land and implications for Gondwana reconstructions. *S. Afr. J. Antarc. Res.* 18(1): 2-10

HUNTER S *see* Gartshore NA, J Cooper & S Hunter 1988. Bird ringing at Marion and Price Edward Islands, 1982-1987; with an analysis of movements since 1951. *S. Afr. J. Antarc. Res.* 18(1): 23-29

KLAGES NTW & GERDES D 1988. A little known colony of Emperor penguins on the coast of the eastern Weddell Sea. *S. Afr. J. Antarc. Res.* 18(1): 18-20

KLAGES NTW *see* Gon O & NTW Klages 1988. The marine fish fauna of the sub-Antarctic Prince Edward Islands. *S. Afr. J. Antarc. Res.* 18(2): 32-54

RYAN PG & WATKINS BP 1988. Accumulation of stranded plastic objects and other artefacts at Inaccessible Island, central South Atlantic Ocean. *S. Afr. J. Antarc. Res.* 18(1): 11-13

WATKINS BP *see* Ryan PG & BP Watkins 1988. Accumulation of stranded plastic objects and other artefacts at Inaccessible Island, central South Atlantic Ocean. *S. Afr. J. Antarc. Res.* 18(1): 11-13

WILKINSON IS & BESTER MN 1988. Is onshore human activity a factor in the decline of the southern elephant seal? *S. Afr. J. Antarc. Res.* 18(1): 14-17

1989

BODEN BP & REID FMH 1989. Marine plankton diatoms between Cape Town and the Prince Edward Islands (SW Indian Ocean). *S. Afr. J. Antarc. Res.* 19(2): 2-49

BODEN GP *see* Perissinotto R & BP Boden 1989. Zooplankton-phytoplankton relationships at the Prince Edward Islands during April/May 1985 and 1986. *S. Afr. J. Antarc. Res.* 19(1): 26-30

DASTYCH H *see* Ryan PG, BP Watkins, RI Lewis Smith, H Dastych, A Eicker, W Foissner, H Heatwole, WR Miller & G Thompson 1989. Biological survey of Robertskollen, western Dronning Maud Land: area description and preliminary species lists. *S. Afr. J. Antarc. Res.* 19(1): 10-20

DUNCOMBERAE CM 1989. Frontal systems encountered between southern Africa and the Prince Edward Islands during April/May 1987. *S. Afr. J. Antarc. Res.* 19(1): 21-25

EICKER A *see* Ryan PG, BP Watkins, RI Lewis Smith, H Dastych, A Eicker, W Foissner, H Heatwole, WR Miller & G Thompson 1989. Biological survey of Robertskollen, western Dronning Maud Land: area description and preliminary species lists. *S. Afr. J. Antarc. Res.* 19(1): 10-20

Res. 19(1): 10-20.

FOISSNER W *see* Ryan PG, BP Watkins, RI Lewis Smith, H Dastych, A Eicker, W Foissner, H Heatwole, WR Miller & G Thompson 1989. Biological survey of Robertskollen, western Dronning Maud Land: area description and preliminary species lists. *S. Afr. J. Antarc. Res.* 19(1): 10-20

GRIBNITZ K-H & KENT LE 1989. Marine and fluvial terraces and colluvial fans reflecting quaternary climatic changes, Gough Island, South Atlantic. *S. Afr. J. Antarc. Res.* 19(1): 2-9

HARRIS C & WATKINS RT 1989. Seal carcass at Tvora (0°5'W, 72°12'S), western Dronning Maud Land, Antarctica. *S. Afr. J. Antarc. Res.* 19(1): 34-35

HEATWOLE H *see* Ryan PG, BP Watkins, RI Lewis Smith, H Dastych, A Eicker, W Foissner, H Heatwole, WR Miller & G Thompson 1989. Biological survey of Robertskollen, western Dronning Maud Land: area description and preliminary species lists. *S. Afr. J. Antarc. Res.* 19(1): 10-20

HUNTER S & KLAGES NTW 1989. The diet of grey-headed albatrosses *Diomedea chrysostoma* at the Prince Edward Islands. *S. Afr. J. Antarc. Res.* 19(1): 31-33

KENT LE *see* Gribnitz K-H & LE Kent 1989. Marine and fluvial terraces and colluvial fans reflecting quaternary climatic changes, Gough Island, South Atlantic. *S. Afr. J. Antarc. Res.* 19(1): 2-9

KLAGES NTW *see* Hunter S & NTW Klages 1989. The diet of grey-headed albatrosses *Diomedea chrysostoma* at the Prince Edward Islands. *S. Afr. J. Antarc. Res.* 19(1): 31-33

KRYNAUW JR 1989. The discovery and significance of sedimentary rocks at Förstefjell, Giaeveryggen. *S. Afr. J. Antarc. Res.* 19(1): 36-39

LEWIS SMITH RI *see* Ryan PG, BP Watkins, RI Lewis Smith, H Dastych, A Eicker, W Foissner, H Heatwole, WR Miller & G Thompson 1989. Biological survey of Robertskollen, western Dronning Maud Land: area description and preliminary species lists. *S. Afr. J. Antarc. Res.* 19(1): 10-20

MILLER WR *see* Ryan PG, BP Watkins, RI Lewis Smith, H Dastych, A Eicker, W Foissner, H Heatwole, WR Miller & G Thompson 1989. Biological survey of Robertskollen, western Dronning Maud Land: area description and preliminary species lists. *S. Afr. J. Antarc. Res.* 19(1): 10-20

PERISSINOTTO R & BODEN BP 1989. Zooplankton-phytoplankton relationships at the Prince Edward Islands during April/May 1985 and 1986. *S. Afr. J. Antarc. Res.* 19(1): 26-30

REID FMH *see* Boden BP & FMH Reid 1989. Marine plankton diatoms between Cape Town and the Prince Edward Islands (SW Indian Ocean). *S. Afr. J. Antarc. Res.* 19(2): 2-49

RYAN PG, WATKINS BP, LEWIS SMITH RI,

DASTYCH H, EICKER A, FOISSNER W, HEATWOLE H, MILLER WR & THOMPSON G 1989. Biological survey of Robertskollen, western Dronning Maud Land: area description and preliminary species lists. *S. Afr. J. Antarc. Res.* 19(1): 10-20

THOMPSON G *see* Ryan PG, BP Watkins, RI Lewis Smith, H Dastych, A Eicker, W Foissner, H Heatwole, WR Miller & G Thompson 1989. Biological survey of Robertskollen, western Dronning Maud Land: area description and preliminary species lists. *S. Afr. J. Antarc. Res.* 19(1): 10-20

WATKINS RT *see* Harris C & RT Watkins 1989. Seal carcass at Tvora (0°5'W, 72°12'S), western Dronning Maud Land, Antarctica. *S. Afr. J. Antarc. Res.* 19(1): 34-35

WATKINS BP *see* Ryan PG, BP Watkins, RI Lewis Smith, H Dastych, A Eicker, W Foissner, H Heatwole, WR Miller & G Thompson 1989. Biological survey of Robertskollen, western Dronning Maud Land: area description and preliminary species lists. *S. Afr. J. Antarc. Res.* 19(1): 10-20. 199

ADAMS NJ *see* Brown CR, NT Klages & NJ Adams 1990. Short and medium-term variation in the diets of penguins at Marion Island. *S. Afr. J. Antarc. Res.* 20(1): 13-20

BESTER MN 1990. Population trends of Subantarctic fur seals and southern elephant seals at Gough Island. *S. Afr. J. Antarc. Res.* 20(1): 9-12

BESTER MN *see* Wilkinson IS & MN Bester 1990. Continued population increase in fur seals, *Arctocephalus tropicalis* and *A. gazella*, at the Prince Edward Islands. *S. Afr. J. Antarc. Res.* 20(2): 58-63

BROWN CR, KLAGES NT & ADAMS NJ 1990. Short and medium-term variation in the diets of penguins at Marion Island. *S. Afr. J. Antarc. Res.* 20(1): 13-20

BROWN CR *see* Cooper J & CR Brown 1990. Ornithological research at the sub-Antarctic Prince Edward Island: a review of achievements. *S. Afr. J. Antarc. Res.* 20(2): 40-57

COCKROFT VG, PEDDEMORS VM, RYAN PG & LUTJEHARMS JRE 1990. Cetacean sightings in the Agulhas Retroflexion, Agulhas Rings and Subtropical Convergence. *S. Afr. J. Antarc. Res.* 20(2): 64-69

COOPER J & BROWN CR 1990. Ornithological research at the sub-Antarctic Prince Edward Island: a review of achievements. *S. Afr. J. Antarc. Res.* 20(2): 40-57

HUNTER DR *see* Krynauw JR, DR Hunter & AH Wilson 1990. A reassessment of the Nils Jørgennutane suite in the Ahlmannryggen. *S. Afr. J. Antarc. Res.* 20(1): 2-8

ISMAIL HE 1990. Surface nutrients in the vicinity of the Prince Edward Islands during April/May 1989. *S. Afr. J. Antarc. Res.* 20(1): 33-36

KLAGES NT *see* Brown CR, NT Klages & NJ Adams

1990. Short and medium-term variation in the diets of penguins at Marion Island. *S. Afr. J. Antarc. Res.* 20(1): 13-20

KRYNAUW JR, HUNTER DR & WILSON AH 1990. A reassessment of the Nils Jørgennutane suite in the Ahlmannryggen. *S. Afr. J. Antarc. Res.* 20(1): 2-8

LUTJEHARMS JRE 1990. Temperatuurstruktuur van die oseaanbolaag tussen Kaapstad en Marion-eiland. *S. Afr. J. Antarc. Res.* 20(1): 21-32

LUTJEHARMS JRE *see* Cockroft VG, VM Peddemors, PG Ryan & JRE Lutjeharms 1990. Cetacean sightings in the Agulhas Retroflexion, Agulhas Rings and Subtropical Convergence. *S. Afr. J. Antarc. Res.* 20(2): 64-69

PEDDEMORS VM *see* Cockroft VG, VM Peddemors, PG Ryan & JRE Lutjeharms 1990. Cetacean sightings in the Agulhas Retroflexion, Agulhas Rings and Subtropical Convergence. *S. Afr. J. Antarc. Res.* 20(2): 64-69

RYAN PG *see* Cockroft VG, VM Peddemors, PG Ryan & JRE Lutjeharms 1990. Cetacean sightings in the Agulhas Retroflexion, Agulhas Rings and Subtropical Convergence. *S. Afr. J. Antarc. Res.* 20(2): 64-69

WILKINSON IS & BESTER MN 1990. Continued population increase in fur seals, *Arctocephalus tropicalis* and *A. gazella*, at the Prince Edward Islands. *S. Afr. J. Antarc. Res.* 20(2): 58-63

WILSON AH *see* Krynauw JR, DR Hunter & AH Wilson 1990. A reassessment of the Nils Jørgennutane suite in the Ahlmannryggen. *S. Afr. J. Antarc. Res.* 20(1): 2-8

1991

ARNAUD F & BRANCH ML 1991. The Pycnogonida of subantarctic Marion and Prince Edward Islands: Illustrated keys to the species. *S. Afr. J. Antarc. Res.* 21(1): 65-71

ARNAUD PM *see* Branch ML, PM Arnaud, J Cantera & D Gianakouras 1991. The benthic Mollusca and Brachiopoda of subantarctic Marion and Prince Edward Islands: 1) Illustrated keys to the species, 2) Records of the 1982-1989 University of Cape Town Surveys. *S. Afr. J. Antarc. Res.* 21(1): 45-64

BERGH HW *see* Hunter DR, B Corner, JR Krynauw, A le Roex, GH Grantham, PG Groenewald, AB Moyes, HW Bergh & C Harris 1991. A recent history of South African earth science research in Antarctica and adjacent regions. *S. Afr. J. Antarc. Res.* 21(2): 173-183

BEST PB & BUTTERWORTH DS 1991. South African research on Antarctic whales. *S. Afr. J. Antarc. Res.* 21(2): 129

BESTER MN & SKINNER JD 1991. The Marion Island cat programme. *S. Afr. J. Antarc. Res.* 21(2): 117

BESTER MN & SKINNER JD 1991. South African research on Antarctic Seals. *S. Afr. J. Antarc. Res.* 21(2): 165-166

- BODEKER GE & SCOURFIELD MWJ 1991. SANAE total column ozone: 1980 to 1990. *S. Afr. J. Antarc. Res.* 21(2): 220-221
- BRANCH ML, ARNAUD PM, CANTERA J & GIANAKOURAS D 1991. The benthic Mollusca and Brachiopoda of subantarctic Marion and Prince Edward Islands: 1) Illustrated keys to the species, 2) Records of the 1982-1989 University of Cape Town Surveys. *S. Afr. J. Antarc. Res.* 21(1): 45-64.
- BRANCH ML, GRIFFITHS CL, KENSLEY B & SIEG J 1991. The benthic Crustacea of subantarctic Marion and Prince Edward Islands: Illustrated keys to the species and results of the 1982 - 1989 University of Cape Town Surveys. *S. Afr. J. Antarc. Res.* 21(1): 3-44
- BRANCH ML *see* Arnaud F & ML Branch 1991. The Pycnogonida of subantarctic Marion and Prince Edward Islands: Illustrated keys to the species. *S. Afr. J. Antarc. Res.* 21(1): 65-71
- BUTTERWORTH DS *see* Best PB & DS Butterworth 1991. South African research on Antarctic whales. *S. Afr. J. Antarc. Res.* 21(2): 129
- CANTERA J *see* Branch ML, PM Arnaud, J Cantera & D Gianakouras 1991. The benthic Mollusca and Brachiopoda of subantarctic Marion and Prince Edward Islands: 1) Illustrated keys to the species, 2) Records of the 1982-1989 University of Cape Town Surveys. *S. Afr. J. Antarc. Res.* 21(1): 45-64
- COOPER J & HEADLAND RK 1991. A history of South African involvement in Antarctica and at the Prince Edward Islands. *S. Afr. J. Antarc. Res.* 21(2): 77-91
- CORNER B & GROENEWALD PB 1991. Gondwana reunited. *S. Afr. J. Antarc. Res.* 21(2): 172
- CORNER B *see* Hunter DR, B Corner, JR Krynauw, A le Roex, GH Grantham, PB Groenewald, AB Moyes, HW Bergh & C Harris 1991. A recent history of South African earth science research in Antarctica and adjacent regions. *S. Afr. J. Antarc. Res.* 21(2): 173-183
- DE WET PB *see* Van Schalkwyk DJ & PB de Wet 1991. 'n Oorsig oor Suid-Afrika se Antarktiese en sub-Antarktiese betrokkenheid. *S. Afr. J. Antarc. Res.* 21(2): 144-146
- FRIEDEL RHW *see* Hughes ARW & RHW Friedel 1991. An OMSKI for SANAE. *S. Afr. J. Antarc. Res.* 21(2): 184
- GIANAKOURAS D *see* Branch ML, PM Arnaud, J Cantera & D Gianakouras 1991. The benthic Mollusca and Brachiopoda of subantarctic Marion and Prince Edward Islands: 1) Illustrated keys to the species, 2) Records of the 1982-1989 University of Cape Town Surveys. *S. Afr. J. Antarc. Res.* 21(1): 45-64
- GON O 1991. A concise review of Antarctic fish research in South Africa. *S. Afr. J. Antarc. Res.* 21(2): 124
- GRANTHAM GH *see* Hunter DR, B Corner, JR Krynauw, A le Roex, GH Grantham, GPB Groenewald, AB Moyes, HW Bergh & C Harris 1991. A recent history of South African earth science research in Antarctica and adjacent regions. *S. Afr. J. Antarc. Res.* 21(2): 173-183
- LA GRANGE JJ 1991. The Beginning: 1. Taking part in the Trans-Antarctic Expedition. *S. Afr. J. Antarc. Res.* 21(2): 92-96
- LA GRANGE JJ 1991. The Beginning: 2. The first South African national Antarctic Expedition, 1959-60. *S. Afr. J. Antarc. Res.* 21(2): 98-106
- LEITH W 1991. Twelve years as master of the SA Agulhas. *S. Afr. J. Antarc. Res.* 21(2): 147-153
- LE ROEX A *see* Hunter DR, B Corner, JR Krynauw, A Le Roex, GH Grantham, PB Groenewald, AB Moyes, HW Bergh & C Harris 1991. A recent history of South African earth science research in Antarctica and adjacent regions. *S. Afr. J. Antarc. Res.* 21(2): 173-183
- LINDESAY JA *see* Lucas MI & JA Lindesay 1991. Global climate change: Environmental and climatic links between Antarctica and South Africa. *S. Afr. J. Antarc. Res.* 21(2): 193-219
- LUCAS MI & LINDESAY JA 1991. Global climate change: Environmental and climatic links between Antarctica and South Africa. *S. Afr. J. Antarc. Res.* 21(2): 193-219
- LUTJEHARMS JRE 1991. A history of recent South African marine research in the Southern Ocean. *S. Afr. J. Antarc. Res.* 21(2): 159-164
- MILLER DGM 1991. Conservation of Antarctic Marine Living Resources: a review and South African perspective. *S. Afr. J. Antarc. Res.* 21(2): 130-142
- MILLER DGM 1991. South African Research on Antarctic krill. *S. Afr. J. Antarc. Res.* 21(2): 143
- MILLER DGM 1991. The impact of BIOMASS-related research on South African Antarctic science. *S. Afr. J. Antarc. Res.* 21(2): 167-171
- MORAAL H *see* Rash JPS, ADM Walker, JWJ Scourfield, PH Stoker & H Moraal 1991. SHARE - an HF Radar System for SANAE. *S. Afr. J. Antarc. Res.* 21(2): 185-186
- MOYES AB *see* Hunter DR, B Corner, JR Krynauw, A le Roex, GH Grantham, PG Groenewald, AB Moyes, HW Bergh & C Harris 1991. A recent history of South African earth science research in Antarctica and adjacent regions. *S. Afr. J. Antarc. Res.* 21(2): 173-183
- RASH JPS, WALKER ADM, SCOURFIELD MWJ, STOKER PH & MORAAL H 1991. SHARE - an HF Radar System for SANAE. *S. Afr. J. Antarc. Res.* 21(2): 185-186
- SCOURFIELD MWJ *see* Bodeker GE & MWJ Scourfield 1991. SANAE total column ozone: 1980 to 1990. *S. Afr. J. Antarc. Res.* 21(2): 220-221
- SCOURFIELD MWJ *see* Hough G & MWJ Scourfield 1991. WAND auroral imager for SANAE. *S. Afr. J. Antarc. Res.* 21(2): 113
- SCOURFIELD MWJ *see* Hughes ARW & MWJ Scourfield 1991. SANAE: The Durban Connection. *S. Afr. J. Antarc. Res.* 21(2): 187-192
- SCOURFIELD MWJ *see* Stephenson JAE & MWJ Scourfield 1991. Natural ozone depletion over Antarctica. *S. Afr. J. Antarc. Res.* 21(2): 222
- SCOURFIELD MWJ *see* Rash JPS, ADM Walker, MWJ Scourfield, H Stoker & H Moraal 1991. SHARE - an HF Radar System for SANAE. *S. Afr. J. Antarc. Res.* 21(2): 185-186
- SHANNON LV 1991. A photographic account of voyages of Captain R L V Shannon to the Antarctic in the 1920s. *S. Afr. J. Antarc. Res.* 21(2): 108-112
- SIEG J *see* Branch ML, CL Griffiths, B Kensley & J Sieg 1991. The benthic Crustacea of subantarctic Marion and Prince Edward Islands: Illustrated keys to the species and results of the 1982 - 1989 University of Cape Town Surveys. *S. Afr. J. Antarc. Res.* 21(1): 3-44
- SIEGFRIED WR 1991. Three decades of South African science in Antarctica. *S. Afr. J. Antarc. Res.* 21(2): 225-229
- SKINNER JD *see* Bester MN & JC Skinner 1991. The Marion Island cat programme. *S. Afr. J. Antarc. Res.* 21(2): 117
- SKINNER JD *see* Bester MN & JD Skinner 1991. South African research on Antarctic Seals. *S. Afr. J. Antarc. Res.* 21(2): 165-166
- SMITH VR 1991. Climate change and its ecological consequences at Marion and Prince Edward Islands. *S. Afr. J. Antarc. Res.* 21(2): 223-224
- SMITH VR 1991. Terrestrial biological research at the Prince Edward Islands. *S. Afr. J. Antarc. Res.* 21(2): 118-123
- STEPHENSON JAE & SCOURFIELD MWJ 1991. Natural ozone depletion over Antarctica. *S. Afr. J. Antarc. Res.* 21(2): 222
- STOKER PH 1991. Exploring geospace and the heliosphere by cosmic rays. *S. Afr. J. Antarc. Res.* 21(2): 158
- STOKER PH 1991. Magnetospheric electrons precipitating into the atmosphere. *S. Afr. J. Antarc. Res.* 21(2): 107
- STOKER PH *see* Rash JPS, ADM Walker, MWJ Scourfield, PH Stoker & H Moraal 1991. SHARE - an HF Radar System for SANAE. *S. Afr. J. Antarc. Res.* 21(2): 185-186
- SWIERSTRA MJ 1991. South African National Committee for SCAR. *S. Afr. J. Antarc. Res.* 21(2): 114-116
- THERON GL 1991. Vliegoperasies ter ondersteuning van die Suid-Afrikaanse Antarktiese en Eilandnavorsingsprogram. *S. Afr. J. Antarc. Res.* 21(2): 154-157
- VAN SCHALKWYK DJ & DE WET PB 1991. 'n Oorsig oor Suid-Afrika se Antarktiese en sub-Antarktiese betrokkenheid. *S. Afr. J. Antarc. Res.* 21(2): 144-146
- VIALL JD 1991. South Africa: The Road to the Antarctic Treaty. *S. Afr. J. Antarc. Res.* 21(2): 125-128

WALKER ADM *see* Rash JPS, ADM Walker, MW J Scourfield, PH Stoker & H Moraal 1991. SHARE - an HF Radar System for SANAE. *S. Afr. J. Antarc. Res.* 21(2): 185-186

1992

ANDREW TG & HECHT T 1992. Feeding biology of *Acantholatris monodactylus* (Pisces: cheilodactylidae) at Tristan da Cunha and Gough Island, South Atlantic. *S. Afr. J. Antarc. Res.* 22(1 & 2): 41-49

ATTWOOD CG & HEARSHAW KD 1992. Lipid content and composition of sub-Antarctic euphausiids and copepods from the Prince Edward Islands. *S. Afr. J. Antarc. Res.* 22(1 & 2): 3-13

AVENANT N *see* Chown SL & N Avenant 1992. Status of *Plutella xylostella* at Marion Island six years after its colonisation. *S. Afr. J. Antarc. Res.* 22(1 & 2): 37-40

BOVA P *see* Chevallier LWJ Verwoerd, P Bova, E Stettler, A du Plessis, JG du Plessis, LM Fernandez & M Nel 1992. Volcanological features and preliminary geophysical investigation on Marion Island. *S. Afr. J. Antarc. Res.* 22(1 & 2): 15-35

CHEVALLIER L, VERWOERD WJ, BOVA P, STETTLER E, DU PLESSIS A, DU PLESSIS JG, FERNANDEZ LM & NEL M 1992. Volcanological features and preliminary geophysical investigation on Marion Island. *S. Afr. J. Antarc. Res.* 22(1 & 2): 15-35

CHOWN SL & AVENANT N 1992. Status of *Plutella xylostella* at Marion Island six years after its colonisation. *S. Afr. J. Antarc. Res.* 22(1 & 2): 37-40

CHOWN SL & CRAFFORD JE 1992. Microhabitat temperatures at Marion Island (46°54' S 37°45' E). *S. Afr. J. Antarc. Res.* 22(1 & 2): 51-58

CRAFFORD JE *see* Chown SL & JE Crafford 1992. Microhabitat temperatures at Marion Island (46°54' S 37°45' E). *S. Afr. J. Antarc. Res.* 22(1 & 2): 51-58

DU PLESSIS A *see* Chevallier L, WJ Verwoerd, P Bova, E Stettler, A du Plessis, JG du Plessis, LM Fernandez & M Nel 1992. Volcanological features and preliminary geophysical investigation on Marion Island. *S. Afr. J. Antarc. Res.* 22(1 & 2): 15-35

DU PLESSIS JG *see* Chevallier L, WJ Verwoerd, P Bova, E Stettler, A du Plessis, JG du Plessis, LM Fernandez & M Nel 1992. Volcanological features and preliminary geophysical investigation on Marion Island. *S. Afr. J. Antarc. Res.* 22(1 & 2): 15-35

FERNANDEZ LM *see* Chevallier L, WJ Verwoerd, P Bova, E Stettler, A du Plessis, JG du Plessis, LM Fernandez & M Nel 1992. Volcanological features and preliminary geophysical investigation on Marion Island. *S. Afr. J. Antarc. Res.* 22(1 & 2): 15-35

GON O & MOSTERT D 1992. Aspects of the ecology of two nototheniid fish species in the inshore zone of the sub-Antarctic Marion Island. *S. Afr. J. Antarc. Res.*

22(1 & 2): 59-67

HEARSHAW KD *see* Attwood CG & KD Hearshaw 1992. Lipid content and composition of sub-Antarctic euphausiids and copepods from the Prince Edward Islands. *S. Afr. J. Antarc. Res.* 22(1 & 2): 3-13

HECHT T *see* Andrew TG & T Hecht 1992. Feeding biology of *Acantholatris monodactylus* (Pisces: cheilodactylidae) at Tristan da Cunha and Gough Island, South Atlantic. *S. Afr. J. Antarc. Res.* 22(1 & 2): 41-49

MOSTERT D *see* Gon O & D Mostert 1992. Aspects of the ecology of two nototheniid fish species in the inshore zone of the sub-Antarctic Marion Island. *S. Afr. J. Antarc. Res.* 22(1 & 2): 59

NEL M *see* Chevallier L, WJ Verwoerd, P Bova, E Stettler, A du Plessis, JG du Plessis, LM Fernandez & M Nel 1992. Volcanological features and preliminary geophysical investigation on Marion Island. *S. Afr. J. Antarc. Res.* 22(1 & 2): 15-35

STETTLER E *see* Chevallier L, WJ Verwoerd, P Bova, E Stettler, A du Plessis, JG du Plessis, JM Fernandez & M Nel 1992. Volcanological features and preliminary geophysical investigation on Marion Island. *S. Afr. J. Antarc. Res.* 22(1 & 2): 15-35

VERWOERD WJ *see* Chevallier L, WJ Verwoerd, P Bova, E Stettler, A du Plessis, JG du Plessis, LM Fernandez & M Nel 1992. Volcanological features and preliminary geophysical investigation on Marion Island. *S. Afr. J. Antarc. Res.* 22(1 & 2): 15-35

1993

ALVÁ V *see* Branch ML, M Jangoux, V Alvá, CI Massin & S Stampanato 1993. The Echinodermata of subantarctic Marion and Prince Edward Islands. *S. Afr. J. Antarc. Res.* 23(1 & 2): 37-70

BESTER MN *see* Hofmeyr GJG & MN Bester 1993. Predation on king penguins by Antarctic fur seals. *S. Afr. J. Antarc. Res.* 23(1 & 2): 71-74

BRANCH ML & WILLIAMS GC 1993. The Hydrozoa, Octocorallia and Scleractinia of subantarctic Marion and Prince Edward Islands: Illustrated keys to the species and results of the 1982-1989 University of Cape Town surveys. *S. Afr. J. Antarc. Res.* 23(1 & 2): 3-24

BRANCH ML, JANGOUX M, ALVÁ V, MASSIN CI & STAMPANATO S 1993. The Echinodermata of subantarctic Marion and Prince Edward Islands. *S. Afr. J. Antarc. Res.* 23(1 & 2): 37-70

HEYNS J 1993. *Eudorylaimus nudicaudatus* sp.n. from Antarctica (Nematoda: Dorylaimoidea). *S. Afr. J. Antarc. Res.* 23(1 & 2): 33-36

HOFMEYR GJG & BESTER MN 1993. Predation on king penguins by Antarctic fur seals. *S. Afr. J. Antarc. Res.* 23(1 & 2): 71-74

JANGOUX M *see* Branch ML, M Jangoux, V Alvá, CI Massin & S Stampanato 1993. The Echinodermata

of subantarctic Marion and Prince Edward Islands. *S. Afr. J. Antarc. Res.* 23(1 & 2): 37-70

MASSIN CI *see* Branch ML, M Jangoux, V Alvá, CI Massin & S Stampanato 1993. The Echinodermata of subantarctic Marion and Prince Edward Islands. *S. Afr. J. Antarc. Res.* 23(1 & 2): 37-70

MOYES AB 1993. The age and origin of the Jutulsessen granitic gneiss, Gjelsvikfjella, Dronning Maud Land. *S. Afr. J. Antarc. Res.* 23(1 & 2): 25-32

STAMPANATO S *see* Branch ML, M Jangoux, V Alvá, CI Massin & S Stampanato 1993. The Echinodermata of subantarctic Marion and Prince Edward Islands. *S. Afr. J. Antarc. Res.* 23(1 & 2): 37-70

WILLIAMS GC *see* Branch ML & GC Williams 1993. The Hydrozoa, Octocorallia and Scleractinia of subantarctic Marion and Prince Edward Islands: Illustrated keys to the species and results of the 1982-1989 University of Cape Town surveys. *S. Afr. J. Antarc. Res.* 23(1 & 2): 3-24

1994

AVENANT NL *see* Cooper J, NL Avenant & JCP van Wyk 1994. Observations of the shortsnout lancetfish *Alepisaurus brevirostris* at sub-Antarctic Marion Island. *S. Afr. J. Antarc. Res.* 24(1 & 2): 126

BALFOUR DA *see* Steele WK, DA Balfour, JM Harris, H Dastych, J Heyns & A Eicker 1994. Preliminary biological survey of Vesleskarvet, northern Ahlmannryggen, western Dronning Maud Land: site of South Africa's new Antarcticbase (sic). *S. Afr. J. Antarc. Res.* 24(1 & 2): 57-65

BESTER MN *see* Jonker FC & MN Bester 1994. The diving behaviour of adult southern elephant seal, *Mirounga leonina*, cows from Marion Island. *S. Afr. J. Antarc. Res.* 24(1 & 2): 75-93

BRANCH ML 1994. The Polychaeta of subantarctic Marion and Prince Edward Islands: Illustrated keys to the species and results of the 1982-1989 University of Cape Town surveys. *S. Afr. J. Antarc. Res.* 24(1 & 2): 3-52

COOPER J, AVENANT NL & VAN WYK JCP 1994. Observations of the shortsnout lancetfish *Alepisaurus brevirostris* at sub-Antarctic Marion Island. *S. Afr. J. Antarc. Res.* 24(1 & 2): 126

COOPER J, VAN WYK JCP & MATTHEWSON DC 1994. Effects of small-mammal trapping on birds at sub-Antarctic Marion Island. *S. Afr. J. Antarc. Res.* 24(1 & 2): 125

COOPER J *see* Newton IP, J Cooper, R Lund, F Mehlum & G Thor 1994. A bibliography of terrestrial biological research in Dronning Maud Land, Antarctica. *S. Afr. J. Antarc. Res.* 24(1 & 2): 111-124

DASTYCH H *see* Steele WK, DA Balfour, JM Harris, H Dastych, J Heyns & A. Eicker 1994. Preliminary biological survey of Vesleskarvet, northern

Ahlmannryggen, western Dronning Maud Land: site of South Africa's new Antarcticbase (sic). *S. Afr. J. Antarc. Res.* 24(1 & 2): 57-65

EICKER A *see* Steele WK, DA Balfour, JM Harris, H Dastych, J Heyns & A Eicker 1994. Preliminary biological survey of Vesleskarvet, northern Ahlmannryggen, western Dronning Maud Land: site of South Africa's new Antarcticbase (sic). *S. Afr. J. Antarc. Res.* 24(1 & 2): 57-65

GON O, HENDRY DA & MOSTERT D 1994. Glycoprotein antifreeze in *Notothenia coriiceps* (Pisces: Nototheniidae) from the sub-Antarctic Marion Island. *S. Afr. J. Antarc. Res.* 24(1 & 2): 53-56

GRÜNDLINGH ML 1994. Surface wave conditions at Marion Island. *S. Afr. J. Antarc. Res.* 24(1 & 2): 95-101

HARRIS JM *see* Steele WK, DA Balfour, JM Harris, H Dastych, J Heyns & A Eicker 1994. Preliminary biological survey of Vesleskarvet, northern Ahlmannryggen, western Dronning Maud Land: site of South Africa's new Antarcticbase (sic). *S. Afr. J. Antarc. Res.* 24(1 & 2): 57-65

HENDRY DA *see* Gon O, DA Hendry & D Mostert 1994. Glycoprotein antifreeze in *Notothenia coriiceps* (Pisces: Nototheniidae) from the sub-Antarctic Marion Island. *S. Afr. J. Antarc. Res.* 24(1 & 2): 53-56

HEYNS J *see* Steele WK, DA Balfour, JM Harris, H Dastych, J Heyns & A Eicker 1994. Preliminary biological survey of Vesleskarvet, northern Ahlmannryggen, western Dronning Maud Land: site of South Africa's new Antarcticbase (sic). *S. Afr. J. Antarc. Res.* 24(1 & 2): 57-65

HILLER N 1994. The biogeographic relationships of the brachiopod fauna from Marion and Prince Edward Islands. *S. Afr. J. Antarc. Res.* 24(1 & 2): 67-74

JONKER FC & BESTER MN 1994. The diving behaviour of adult southern elephant seal, *Mirounga leonina*, cows from Marion Island. *S. Afr. J. Antarc. Res.* 24(1 & 2): 75-93

LUNDR *see* Newton JP, J Cooper, R Lund, F Mehlum & G Thor 1994. A bibliography of terrestrial biological research in Dronning Maud Land, Antarctica. *S. Afr. J. Antarc. Res.* 24(1 & 2): 111-124

MATTHEWSON DC *see* Cooper J, JCP van Wyk & DC Matthewson 1994. Effects of small-mammal trapping on birds at sub-Antarctic Marion Island. *S. Afr. J. Antarc. Res.* 24(1 & 2): 125

MEHLUM F *see* Newton IP, J Cooper, R Lund, F Mehlum & G Thor 1994. A bibliography of terrestrial biological research in Dronning Maud Land, Antarctica. *S. Afr. J. Antarc. Res.* 24(1 & 2): 111-124

MOSTERT D *see* Gon O, DA Hendry & D Mostert 1994. Glycoprotein antifreeze in *Notothenia coriiceps* (Pisces: Nototheniidae) from the sub-Antarctic Marion Island. *S. Afr. J. Antarc. Res.* 24(1 & 2): 53-56

NEWTON IP 1994. Climatic data from Robertskollen,

Dronning Maud Land, Antarctica, January 1993 to January 1995. *S. Afr. J. Antarc. Res.* 24(1 & 2): 103-110
NEWTON IP, COOPER J, LUND R, MEHLUM F & THOR G 1994. A bibliography of terrestrial biological research in Dronning Maud Land, Antarctica. *S. Afr. J. Antarc. Res.* 24(1 & 2): 111-124
STEELE WK, BALFOUR DA, HARRIS JM, DASTYCH H, HEYNS J & EICKER A 1994. Preliminary biological survey of Vesleskarvet, northern Ahlmannryggen, western Dronning Maud Land: site of South Africa's new Antarctic base (sic). *S. Afr. J. Antarc. Res.* 24(1 & 2): 57-65
THOR G *see* Newton IP, J Cooper, R Lund, F Mehlum & G Thor 1994. A bibliography of terrestrial biological research in Dronning Maud Land, Antarctica. *S. Afr. J. Antarc. Res.* 24(1 & 2): 111-124
VAN WYK JCP *see* Cooper J, JCP van Wyk & DC Matthewson 1994. Effects of small-mammal trapping on birds at sub-Antarctic Marion Island. *S. Afr. J. Antarc. Res.* 24(1 & 2): 125
VAN WYK JCP *see* Cooper J, NL Avenant & JCP van Wyk 1994. Observations of the shortsnout lancetfish *Alepisaurus brevirostris* at sub-Antarctic Marion Island. *S. Afr. J. Antarc. Res.* 24(1 & 2): 126

1995

CRAFFORD JE *see* Marshall DJ, JE Crafford, JR Krynauw, AE Drummond & IP Newton 1995. The biology, physico-chemistry and geology of a nunatak pond at Valterkulen, western Dronning Maud Land, Antarctica. *S. Afr. J. Antarc. Res.* 25(1 & 2): 9-16
DRUMMOND AE *see* Marshall DJ, JE Crafford, J R. Krynauw, AE Drummond & IP Newton 1995. The biology, physico-chemistry and geology of a nunatak pond at Valterkulen, western Dronning Maud Land, Antarctica. *S. Afr. J. Antarc. Res.* 25: 9-16
GREMMEN NJM & VAN MEIJDEN R 1995. Introduced *Agrostis* species at sub-antarctic Marion Island. *S. Afr. J. Antarc. Res.* 25: 85-86
KRYNAUW JR *see* Marshall DJ, JE Crafford, JR Krynauw, AE Drummond & IP Newton 1995. The biology, physico-chemistry and geology of a nunatak pond at Valterkulen, western Dronning Maud Land, Antarctica. *S. Afr. J. Antarc. Res.* 25: 9-16
LUTJEHARMS JRE 1995. Bibliography of the South African Journal of Antarctic Research. *S. Afr. J. Antarc. Res.* 25: 51-84
LUTJEHARMS JRE 1995. The South African Journal of Antarctic Research; an end to 26 years of publication. *S. Afr. J. Antarc. Res.* 25: 3-6
MARSHALL DJ, CRAFFORD JE, KRYNAUW JR, DRUMMOND AE & NEWTON IP 1995. The biology, physico-chemistry and geology of a nunatak pond at Valterkulen, western Dronning Maud Land, Antarctica. *S. Afr. J. Antarc. Res.* 25: 9-16
NEWTON IP *see* Marshall DJ, JE Crafford, JR

Krynauw, AE Drummond & IP Newton 1995. The biology, physico-chemistry and geology of a nunatak pond at Valterkulen, western Dronning Maud Land, Antarctica. *S. Afr. J. Antarc. Res.* 25: 9-16
SWANEPOEL JJP 1995. Stratigraphy and sedimentology of the Ahlmannryggen group in the Borgmassivet, western Queen Maud Land. *S. Afr. J. Antarc. Res.* 25: 17-50
VAN MEIJDEN R *see* Gremmen NJM & R van Meijden 1995. Introduced *Agrostis* species at sub-antarctic Marion Island. *S. Afr. J. Antarc. Res.* 25: 85-86

Research note

Introduced *Agrostis* species at sub-Antarctic Marion Island

Marion Island has escaped the intentional or accidental introduction of large numbers of species which has occurred at many other oceanic islands (see e.g. Holdgate 1967). As this relatively undisturbed status of the island is important from a scientific as well as from a nature conservation viewpoint (Smith & Smith 1987), there has been a long-standing interest in the occurrence of alien species (reviewed by Watkins & Cooper 1986). Several surveys of the distribution of alien plants on the island have been made during the past decades (Huntley 1971, Gremmen 1975, 1981, 1982, Bergstrom & Smith 1990), resulting in a list of 14 species of alien vascular plants. This list contained one species of *Agrostis*: *A. stolonifera* L.

In 1994 several colonies of a grass of the genus *Agrostis*, clearly different from *A. stolonifera*, were discovered near the Meteorological Station at Transvaal Cove. A study of these plants, and of older collections by Gremmen, showed the presence of the following three introduced *Agrostis* species on Marion Island.

Agrostis castellana Boiss. & Reuter (Highland Bent)
The species is recognised by the two extruding nerves at the top of the lemma. Ligules are 0.5 - 2 mm long.

Gremmen collected this species in 1975 in Prion Valley, near the Meteorological Station, and from streambanks in the Albatross Lakes area. The species occurs outside areas disturbed by man. It has been present on the island for at least two decades and has spread to Albatross Lakes presumably by natural means. Therefore *A. castellana* is considered as a naturalised alien.

A. castellana is probably of Mediterranean origin. It was introduced into North America, northern Europe, New Zealand and other parts of the world (Hubbard 1992). It has probably been overlooked in many areas. Wace (1986) reports the species as introduced on Gough Island.

Agrostis gigantea Roth (Black Bent)
These are much larger plants than *A. stolonifera*, with a more than 10 cm long, very loose inflorescence. Ligules are very blunt, toothed, 1.5 - 6 mm long.

A number of colonies of this species were found in May 1994, between the Meteorological Station and Gentoo Lake, growing on well drained peat soil.

This species occurs naturally in Europe and temperate Asia and was introduced in North America and other areas (Hubbard 1992).

Agrostis stolonifera L. (Creeping Bent)

These plants are smaller than *A. gigantea*, panicles contracted after flowering. Ligules are blunt, 1 - 6 mm long.

The first collection was made by Huntley in 1965 at the Meteorological Station (Gremmen & Smith 1981). Presently the species is widely spread on the island (Bergstrom & Smith 1990). *A. stolonifera* has become dominant in the vegetation of drainage lines, stream banks and coastal slopes in large parts of the island. Here it crowds out the native *Acaena magellanica* and causes a considerable reduction in the number of native plant species in these communities.

A. stolonifera is a Northern Hemisphere species and has been introduced into South America, Australia, New Zealand and southern Africa (Hubbard 1992, Hulten 1971). It is reported from many southern temperate and sub-Antarctic islands, e.g. Tristan da Cunha, Gough (Wace 1986), the Falkland Islands (Moore 1968), Iles Crozet (Davies & Greene 1976), Kerguelen (Greene & Walton 1976), Ile Amsterdam (Jolinon 1987) and Auckland Islands (Muerk 1982).

All three introduced species of *Agrostis* flower profusely on Marion Island, but seeds seem to be produced only on favourable years. Often flowers have not yet opened by the onset of winter and flower stalks die off without seed being produced.

These additions to the Marion Island flora bring the number of alien vascular plant species collected on the island to 18, out of a total vascular flora of 42 species. From the date of the first collections and from the distribution data it is inferred that *A. stolonifera* and *A. castellana* have been introduced at the Meteorological Station, in the first decade or so after the establishment of the station (*cf.* Gremmen & Smith 1981). *A. gigantea* is believed to be a recent introduction, as it was not noted during previous surveys. It is conspicuously larger than the other *Agrostis* species on the island and it is unlikely that it has been overlooked. As it occurs in similar habitats as *A. stolonifera*, and has similar reproductive strategies (Grime *et al.* 1988), *A. gigantea* may be expected to spread into the surrounding area. It seems advisable to try and eradicate the species before it becomes widespread.

Specimens have been deposited at the Rijksherbarium, Leiden, The Netherlands.

Acknowledgements

Prof VR Smith is thanked for the opportunity provided to the first author to visit Marion Island in 1993-94, the South African Department of Environmental Affairs and Tourism for logistic support, and the Netherlands Antarctic Research Program for financial support. Dr Marianna Steenkamp helped in locating herbarium specimens.