

PHYSICS

BRITISH ANTARCTIC TERRITORY



Mark St. Quintin
University of Natal
King George V Avenue
Durban 4001
Rep. of South Africa



Visit to Neumayer Station
Atka Bay 6-1-84



M.V. "S.A. AGULHAS"

MS S.A. AGULHAS BY KAAPSTAD 350810 CAPE TOWN	Vaart Voyage 3.4
ROEP - CALL DRTT (Bruto - Gross)	
TONNEMAT - TONNAGE 5 359,13t	
MOEFENING SEAG ENGINES 2 x 2 238KW	
LENGTE - LENGTH 103,88m	
BREEDTE - BEAM 18,05m	



SANAE

25



Mr A.M.C. St. Quintin
6 Frances Street
Grahamstown
6140
SOUTH AFRICA / SÜD AFRIKA

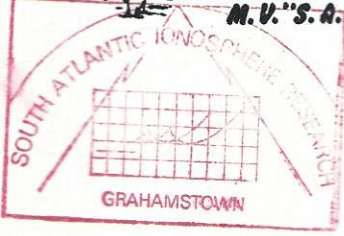


SUID-AFRIKAANSE NASIONALE ANTARCTIESE EKSPEDISIE
1984-85
SOUTH AFRICAN NATIONAL ANTARCTIC EXPEDITION

SOUTH AFRICAN
NATIONAL ANTARCTIC
EXPEDITION
SANAE 70° 17' S 2° 22' W

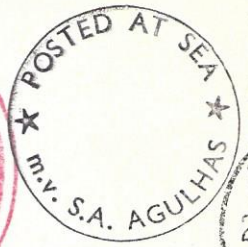


M.V. "S.A. AGULHAS"



S.A. AGULHAS m.	V. 17
KAAPSTAD 35081	Tonnage
CAPE TOWN	
RDEP - CALL ZRRRT	(Bruto - Gross)
TONNEMAAT - TONNAGE	5 353,13t
HOOFENJINS	
MAIN ENGINES	2 x 2 258kW
LENGTE - LENGTH	103,88m
BREEDTE - BEAM	18,05m

Mr A.M.C. St. Quentin
3 Queen's grove
Grahamstown
6140.



W.P. de West.

~~Handwritten signature~~

~~Handwritten signature~~

~~Handwritten signature~~

Blakute

Wor

~~Handwritten signature~~

~~Handwritten signature~~

~~Handwritten signature~~

~~Handwritten signature~~

Mrs. G. Quinlan

~~Handwritten signature~~

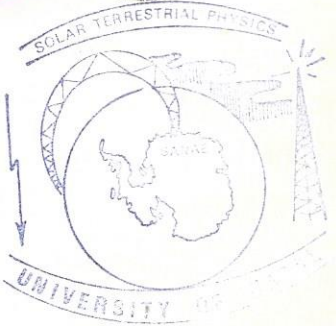
JUID-APRIL 1984
 Nasionale Antarktiese
 Ekspedisie
 SANAE 70° 17' S 2° 22' W



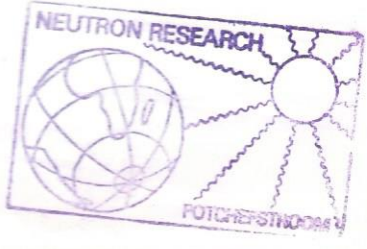
M.V. "S.A. AGULHAS"



SANAE



M.V. S.A. AGULHAS m/v	KAAPSTAD 350810	Vaart	3.4
ROEP - CALL ZRRRT		(Bruto - Gross)	
TONNEMAAT - TONNAGE		5 959,13t	
HOOFENJINS		2 x 2 238KW	
LENGTE - LENGTH		103,89m	
BREEDTE - BEAM		18,05m	



Sally Root
 6 Frances Street
 Grahamstown
 6140

SOUTH AFRICAN
 NATIONAL ANTARCTIC
 EXPEDITION
 SANAE 70° 17' S 2° 22' W



M.V. "S.A. AGULHAS"

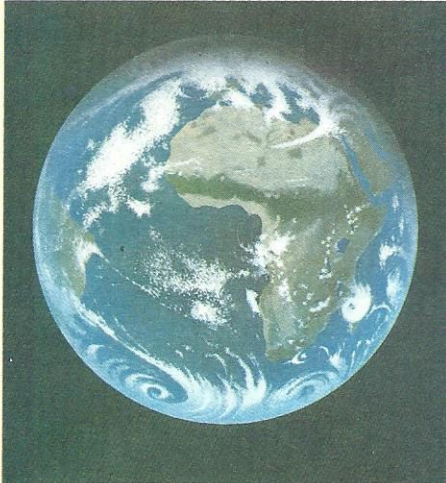


Mr A.M.C. St. Quentin
 3 Queen's Grove
 Grahamstown
 6140.

M.V. S.A. AGULHAS m/v	KAAPSTAD 350810	Vaart	17
ROEP - CALL ZRRRT		(Bruto - Gross)	
TONNEMAAT - TONNAGE		5 959,13t	
HOOFENJINS		2 x 2 238KW	
LENGTE - LENGTH		103,89m	
BREEDTE - BEAM		18,05m	



WEERSTASIES WEATHER STATIONS



SOUTH AFRICAN WEATHER STATIONS

The weather of a country is influenced by weather conditions within and outside its borders. The regular careful observation of these conditions, both on the surface and in the upper air, forms the basis of meteorology. At the Headquarters of the Weather Bureau in Pretoria, where weather-charts are analysed by hand and by computer, thousands of weather reports in numerical code are received daily from all over the southern hemisphere. These reports are processed before weather forecasts are released to the media, the public, aviation, shipping and other concerns.

More than a hundred weather stations are situated right through South Africa with the specific object of supplying the Weather Bureau with timely observations throughout the day. However, it is mainly weather systems that develop over the southern Atlantic and Indian Oceans and move eastwards past the country that cause significant changes in the weather. Weather observations in these extensive surrounding oceans, however, are limited, because ships rarely move in those areas in which meteorologists are chiefly interested.

Therefore permanent weather stations were established on Marion and Gough Islands and at Antarctica. Reliable observations from these stations are used to verify observations from ships and floating weather stations (weather buoys), and to calibrate those from weather satellites.

Marion Island, which forms part of the Prince Edward Islands and was annexed by South Africa in 1947, is situated on 47° South and 38° East. The island is approximately 22 km long and 14 km wide. The climate is cold, wet and windy, with an average annual temperature of 5 °C. Due to the marshy conditions, wooden pathways had to be erected throughout the island. The small beaches teem with sea-elephants, penguins, albatross and other birds.

Gough Island, situated 40° South and 10° West, is British domain and the weather base area is leased to South Africa. This island is much smaller than Marion, but also rises from the sea abruptly and steeply, with the same rough and rocky shore-line. The annual temperature averages about 11,5 °C, causing slopes to be abundantly covered with moss, grasses, bushes and ferns. Gough is rich in bird-life, and albatross, sea-gulls, storm petrels and penguins abound. Seal and sea-elephant also occur.

Since the beginning of 1960 South Africa has maintained a base at 70° South and 2½° West on the ice-shelf surrounding Antarctica. In a year's time such a base is completely buried in snow. Air is sucked in via ventilation shafts and heated, therefore it is quite comfortable inside the huts, even during snowstorms. The climate is extremely cold. The temperature during the summer months averages only -5 °C, while there is no sun at all in winter. The base is known as SANAE, abbreviation for South African National Antarctic Expedition.

The Department of Transport is responsible for the logistics and administration of the base in Antarctica and those on the two islands. Relief personnel are transported annually on the departmental research and supply vessel, the *SA Agulhas*, which has been specially strengthened for navigation in pack-ice.

Weather observations by weather satellites also monitoring the southern ocean areas are received by the Satellite Remote Sensing Centre of the Council for Scientific and Industrial Research and relayed to the Weather Bureau.

Die weer van 'n land word beïnvloed deur weerstoestande binne en buite sy grense. Die gereelde noukeurige waarneming van hierdie toestande, beide aan die oppervlak en in die bolug, vorm die basis van weerkunde. By die Hoofkantoor van die Weerburo in Pretoria, waar weerkaarte per hand en deur 'n rekenaar ontleed word, word daaglik duisende weerberigte in syferkode van oor die hele suidelike halfgrond ontvang. Hierdie berigte word verwerk voordat weervoorspellings aan die media, die publiek, lugvaart, skeepvaart en ander instansies uitgereik word.

Meer as 'n honderd weerstasies is versprei oor Suid-Afrika met die spesifieke doel om deur die dag tydige waarnemings aan die Weerburo te voorsien. Dit is egter veral weerstelsels wat oor die suidelike Atlantiese en die Indiese Oseaan ontwikkel en ooswaarts verby die land beweeg wat betekenisvolle weersveranderings veroorsaak. Weerwaarnemings in hierdie uitgestrekte omliggende oseane is egter skaars omdat skeep selde in dié gebiede vaar waarin weerkundiges eintlik belang stel.

Permanente weerstasies is gevolglik op Marion- en Gougheiland en in Antarktika gestig. Betroubare waarnemings van hierdie stasies word gebruik om die waarnemings van skeep en drywende outomatiese weerstasies (weerboeie) te kontroleer en om dié van weersatelliete te kalibreer.

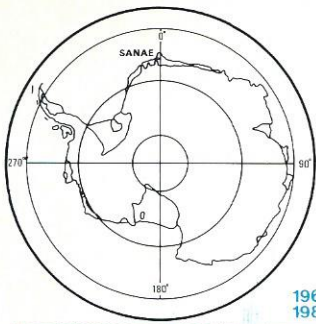
Marioneiland, wat deel uitmaak van die Prins Edward-eilandgroep wat in 1947 deur Suid-Afrika geannekseer is, is op 47° Suid en 38° Oos geleë. Die eiland is ongeveer 22 km lank en 14 km breed. Die klimaat is koud, nat en winderig, met 'n gemiddelde jaarlikse temperatuur van 5°C. Weens die moerstoestande moes plankbedekte voetpaadjies oral op die eiland aangebring word. Die strandjies wemel van seeolifante, pikkewyne, albatrosse en ander voëls.

Gougheiland, geleë op 40° Suid en 10° Wes, is Britse eiendom en die weerbasisgebied word aan Suid-Afrika verhuur. Dié eiland is heelwat kleiner as Marion, maar verrys net so plotseling en steil uit die see en het net so 'n ruwe, rotsagtige kuslyn. Die gemiddelde jaarlikse temperatuur is ongeveer 11,5°C, wat meebring dat die hange welig met mos, grasse, bosse en varings bedek is. Gough is ryk aan voëllewe en albatrosse, see-meeue, stormvoëls en pikkewyne is volop. Robbe en seeolifante kom ook voor.

Sedert begin 1960 handhaaf Suid-Afrika 'n basis op 70° Suid en 2½° Wes op die ysbank om Antarktika. Só 'n basis is na slegs 'n jaar heeltemal onder sneeu begrawe. Lug word deur ventilasieskagte ingesuijg en verwarm, sodat dit in die hutte heeltemal gerieflik is, selfs terwyl sneeustorms buite woed. Die klimaat is uiters koud. Die gemiddelde temperatuur gedurende die somermaande is slegs -5°C, terwyl die son gedurende die winter glad nie skyn nie. Die basis staan bekend as SANAE, die afkorting van Suid-Afrikaanse Nasionale Antarktiese Ekspedisie.

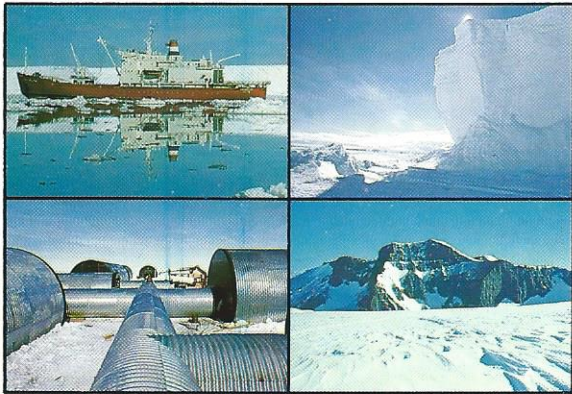
Die Departement van Vervoer is verantwoordelik vir die logistiek en administrasie van die basisse in Antarktika en op die twee eilande. Aflospersoneel word jaarliks met die departementele navorsing- en voorredeskip, die SA *Agulhas*, vervoer. Dié skip is spesiaal versterk vir navigasie in pakys.

Weerwaarnemings van weersatelliete wat ook die suidelike oseaangebiede dek, word deur die Satelliet-afstandswaarnemingsentrum van die Wetenskaplike en Nywerheidsnavorsingsraad ontvang en aan die Weerburo voorsien.



Twintigste Herdenking
van die Antarktiese Verdrag
Twentieth Anniversary
of the Antarctic Treaty

1961
1981



DIE ANTARKTIESE VERDRAG 1961-1981

Suid-Afrika was een van die twaalf lande wat op 1 Desember 1959 die Antarktiese Verdrag in Washington DC onderteken het. Die Verdrag het op 23 Junie 1961 vir 'n tydperk van dertig jaar in werking getree.

Die doel van die Verdrag is om die voortsetting van internasionale wetenskaplike navorsing in Antarktika te verseker. Verder bepaal dit onder meer dat dié vasteland in sy natuurlike staat en slegs vir vreedsame doeleindes bewaar moet word. So word hierdie Verdrag 'n simbool van die wetenskaplike wêreld wat geen nasionale of politieke grense het nie. Lidlande van die Antarktiese Verdrag vergader tweejaarliks om probleme van gemeenskaplike belang te bespreek.

Die eerste Suid-Afrikaanse Nasionale Antarktiese Ekspedisie (SANAE) het op 3 Desember 1959 onder leiding van Hannes la Grange na Antarktika vertrek om op die sewende vasteland te oorwinter.

Tans word die SANAE-basis, wat op die Fimbulisen-ysbank 70° 18' Suid en 2° 24' Wes geleë is, deur Suid-Afrikaners beman.

THE ANTARCTIC TREATY 1961-1981

South Africa was one of the twelve countries who signed the Antarctic Treaty on 1 December 1959 in Washington DC. The Treaty came into force on 23 June 1961 for a period of thirty years.

The aim of the Treaty is to ensure the continuation of international scientific research in Antarctica. It furthermore provides that Antarctica will only be reserved for peaceful purposes and that this continent must be preserved in its natural state. Thus the Treaty becomes a symbol of the world of science, which knows no national or political boundaries. Signatory countries meet every two years to discuss problems of mutual interest.

The first South African National Antarctic Expedition (SANAE) under the leadership of Hannes la Grange departed for Antarctica on 3 December 1959 to spend the winter on the seventh continent.

At present the SANAE base, which is situated on the Fimbulisen ice shelf 70° 18' South and 2° 24' West, is manned by South Africans.



Deutsche
Antarktisexpedition
1981/82



GEORG-V.-NEUMAYER
STATION *ANTARKTIS



Germany's Most Southern
Radio Station 70°37'S 03°22'W

Paul HAG
Am Fuchsberg 4.
2905 Städt 3
West Germany

Dear Mark,

As I promised in several radio contacts between SANAE and Geop von Neumayer-Station I now will send you some informations and also some PR-stuff from the perman base. I hope that every thing is interesting to you. Excuse my very late letter, but I have just finished the vacation together with my family. We spent some weeks at the Mediterranean sea on an spanish Island called "Ibiza". It was not very good because the weather was always rainy and overcast. Now the weather here is quite good and I can enjoy my garden and the Barbecues we can celebrate.

All the best to you

Yours

Paul