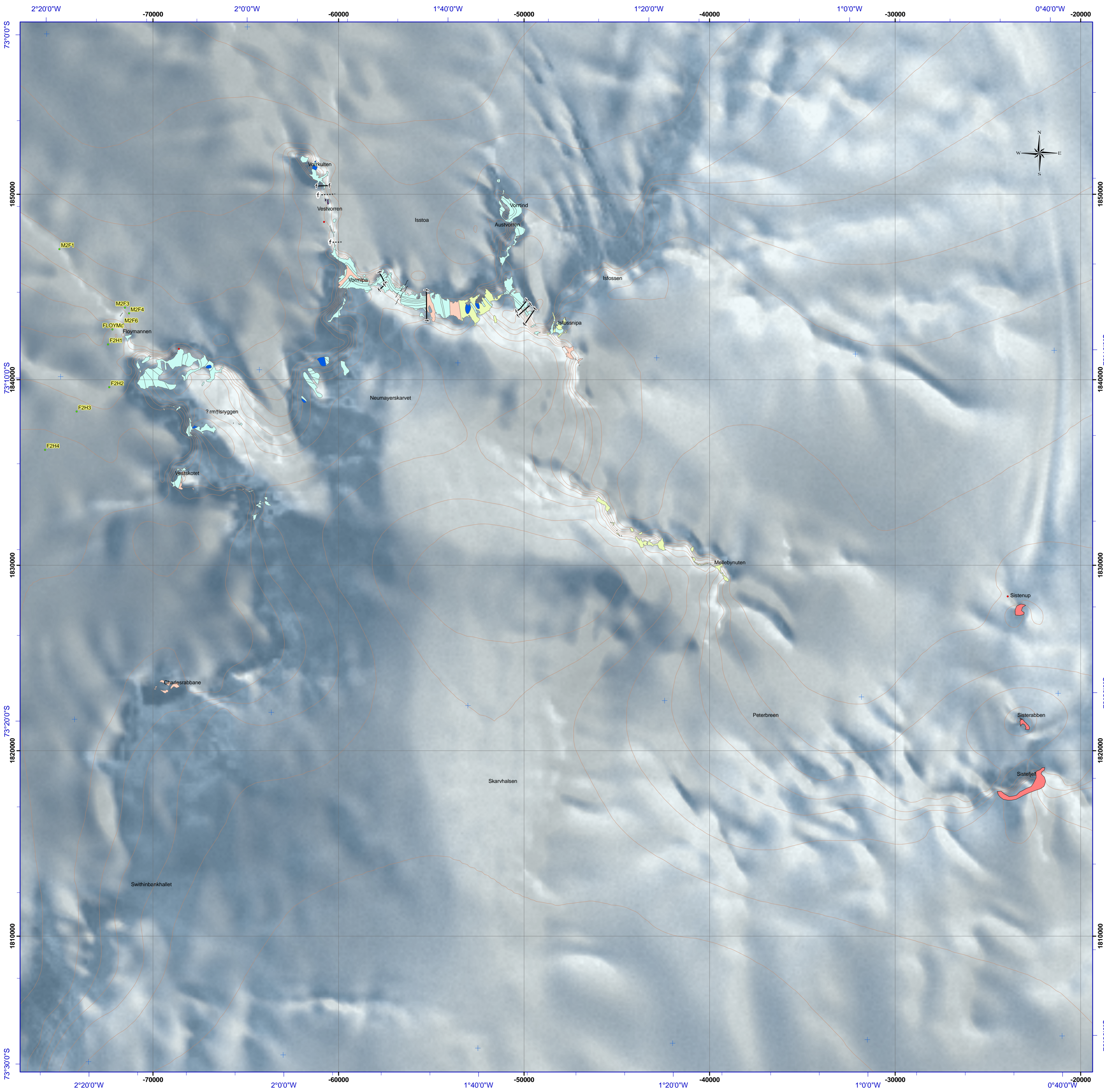


# The geology of the Northern Kirwanveggen

## Dronning Maud Land ANTARCTICA

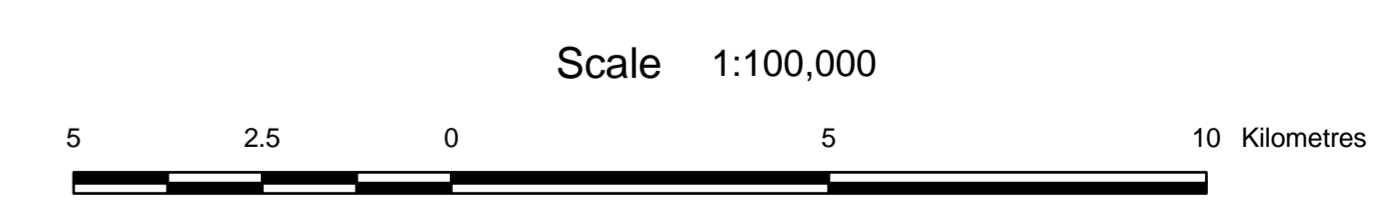
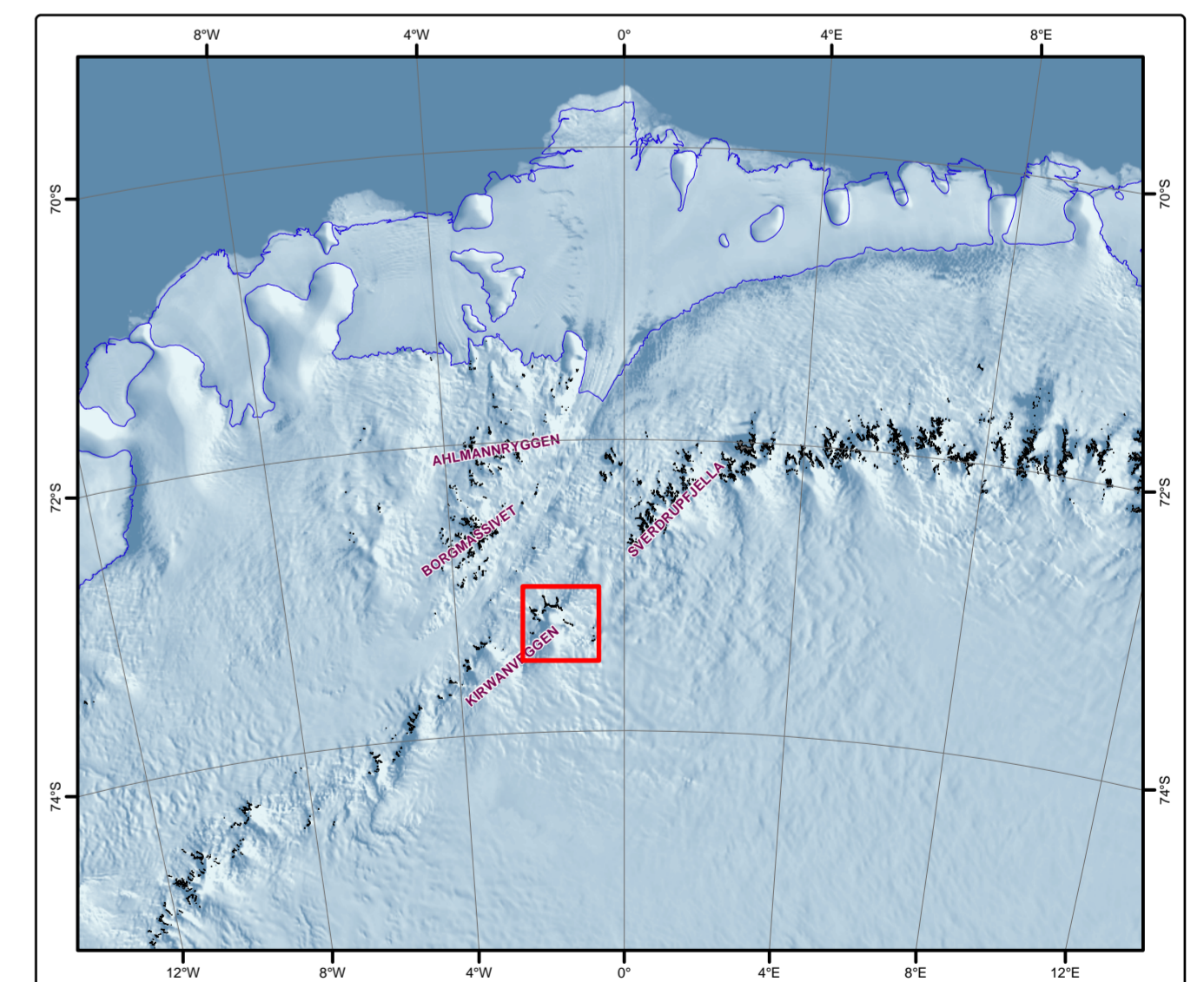
**SANAP - 2006**

Data compiled from geological mapping done under the auspices of the South African National Antarctic Program



### Legend

<b>Sverdrupfjella Group</b>	<b>Intrusives</b>
<b>Kirwanveggen volcanics</b>	<b>Jurassic dykes and sills</b>
■ basalt	■ dolerite
<b>"Kirwanveggen Gneiss Complex"</b>	<b>Sistefjell Syenite Complex</b>
▨ banded and orthogneiss	■ syenite
▨ migmatite	<b>Pegmatites and felsic intrusives</b>
▨ augen gneiss	■ pegmatite and leucogranite
▨ mylonite	<b>neo-proterozoic mafic intrusives</b>
<b>Faults</b>	■ diorite
f - - - Inferred	■ amphibolite
f - f Normal	■ metagabbro
▲ Thrust	— Contours 50m interval
~ shear zone	● Navigation Waypoints
<b>Interpolated structure</b>	
· · · · Interpolated contact	
- - - Interpolated shear	
- - - Interpolated unconformity	
● Sample locality	



Datum: WGS84  
 Projection: Antarctic Polar Steriographic  
 Standard parallel: 71° S