

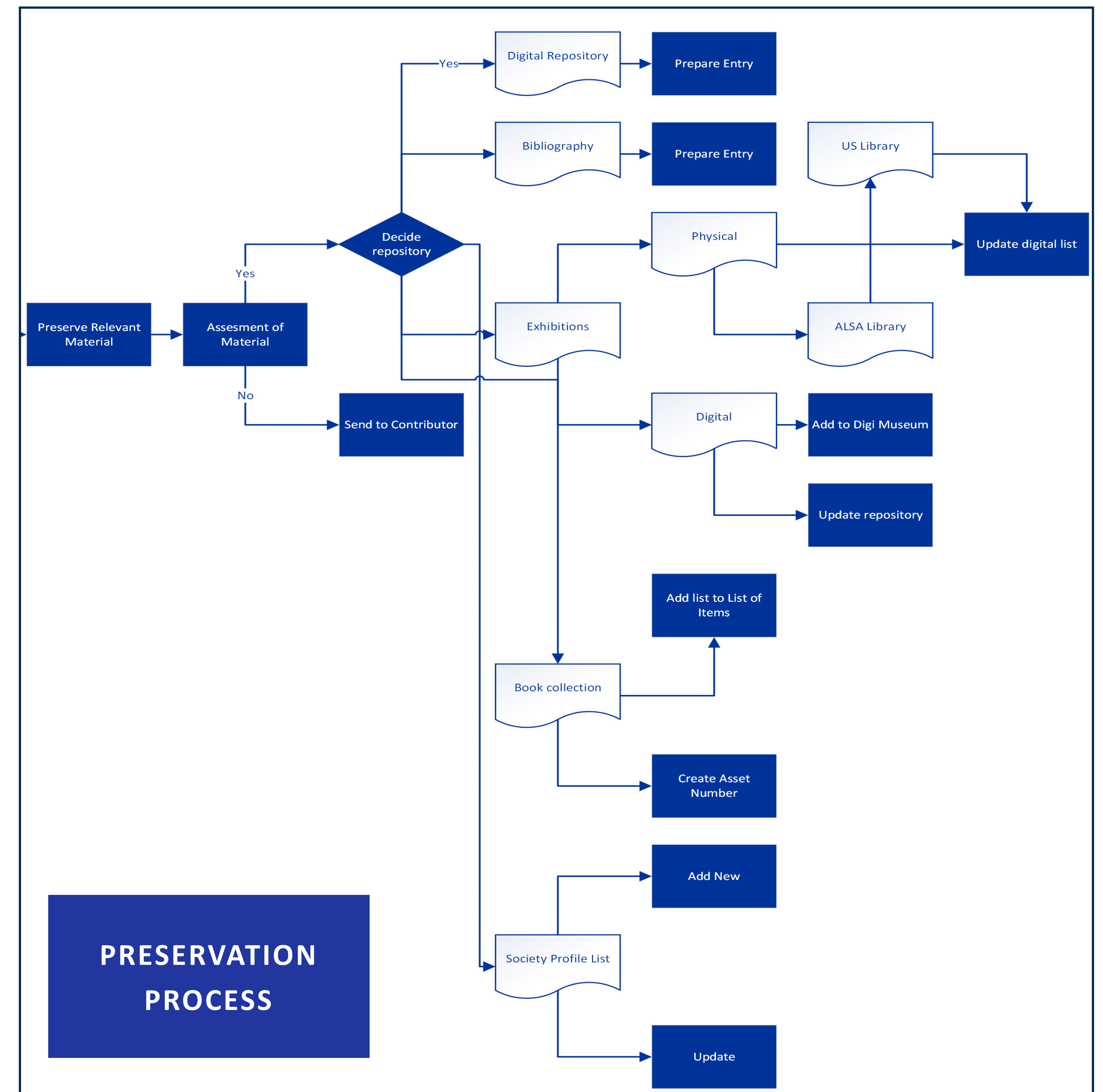


The digital repository of the Antarctic Legacy of South Africa displaying South Africa's contribution in the Antarctic region

MP Olivier—Antarctic Legacy of South Africa—Stellenbosch University

Increasingly human and social sciences material and data are being recognised as crucial in the world of research. The Antarctic Legacy of South Africa (ALSA) is preserving material of the human involvement from South Africa by maintaining a digital data repository. Material and data in this repository are valuable accounts of South Africa's Antarctic and sub-Antarctic natural and cultural histories, and create avenues for Antarctic research, overcoming the continent's remoteness and the challenges of conducting research there. ALSA has been maintaining a digital repository on DSPACE for more than a decade. This poster will give a layout of the digital repository and include the collections that are housed in the repository. It will show that firsthand experiences are documented and preserved for the polar legacy of a country, but to preserve it for the substantial number of scientific deductions and analysis that can be gained from preserving the information. The contribution of human involvement is much more than just pictures and diaries left behind, their work and life can enhance our perceptions of the environment in the polar regions to preserve the future.

The repository started in 2009 and at that stage mostly include images diaries and documents. Since then, the collection has been expanded after assessment of material and data that became available as well as the necessity of including current material that will soon become history. The archive has also been reorganised to meet the need of the users and to make the user experience better for researchers to get insight into the past. It is important to know that an archive needs to be transformed to accommodate users and material as this arises during the life span of the archive.



Documents - Historical

- Antarctic Bulletin
- National and International Archives
- South African Journal on Antarctic Research

Documents - Official

- Governmental documents
- SANAP Official documents

Documents - General

- Other Documents
- Popular Writings

Resources

- Informational Material - education and outreach
- MAPS & Geographical Features

SANAP

- News Letters (Overwintering Teams)
- SANAP related positions

SANAP Research

- Articles: Research - Bibliography
- Research: Events, Presentations, Posters
- Research Institutions, Projects, Infrastructures
- Thesis

SANAP Takeover

- Take Over Documents
- Vessel Voyages

SAPRI

- South African Polar Research Infrastructure

Antarctic Legacy Archive

- About
- Copyright
- How to
- Contents
- MAPS & Geographical Features
- Contact

- ### OFFICIAL DOCUMENTS
- 1912 Whaling station in South Georgia or South Shetland Islands
 - 1924 Representations made by Messrs Irvin and Johnson in regard to the proposed establishment at Saldanha Bay of a base for the Antarctic whaling industry
 - 1926 International council for the exploration of the sea with regard to whaling vol. 1
 - 1930 Antarctica: political sovereignty vol. 1
 - 1930 International council for the exploration of the sea with regard to whaling vol. 2
 - 1932 Convention for the Regulation of Whaling.
 - 1932 South African Antarctic expeditions 1930-32
 - 1933 Whaling: press cuttings
 - 1934 CO 78/197/13 Prince Edward and Marion Islands (1934)
 - 1938 International Agreement for the Regulation of Whaling
 - 1938 Polar Committee minutes of meeting 1938/39
 - 1940 H.M.S. Neptune's war time voyage to the Southern Ocean
 - 1943 Falkland Islands and Dependencies vol. 1
 - 1945 South African ratification of Protocol of 26 December 1945 regarding whaling
 - 1946 Meteorological Tristan da Cunha including Gough and Marion Isles 1946
 - 1947 Letter by British P.M. Attlee regarding the Prince Edward Islands
 - 1947 PREM 8/666 discussions on transfer of sovereignty of Prince Edward and Marion Island to South Africa
 - 1947 Prince Edward and Marion Island vol. 1
 - 1948 Claims in Antarctica : Prince Edward and Marion Islands
 - 1948 Commanding officers of the SAS Transvaal
 - 1948 Documentation from the Polar Committee
 - 1948 Falkland Islands and Dependencies vol. 2
 - 1948 Marion second relief report on HMS Natal in 1948
 - 1948 Operation Sneektown report

- ### PHOTO GALLERY SANAE
- 1959 Graham Blyth in working
 - 1959 Members of the British team to Antarctica in 1959 camping
 - 1959 Halley Bay base during the IGY expedition of 1959
 - 1959 Outside the base
 - 1959 1st SANAE Overwintering Team, 1960
 - 1960 The frozen landscape of Antarctica.
 - 1960 Travelling through the ice
 - 1960 Entrance to the SANAE base
 - 1960 A view of the landscape with meteorological equipment.
 - 1960 The dogs at Norway Station
 - 1960 Dogs at Norway Station in the base
 - 1960 The Antarctic landscape

Recently Added

- Title: *The Nunatak May 2024*
Author: SANAE63; 563
- Title: *Who are the students of SEAmester VII*
Author: SEAmester

Visit the digital archive of the Antarctic Legacy of SA
 Click on QR Code

