

Antarctica, Africa and the Arts

Dr Charne Lavery | University of Pretoria and University of the Witwatersrand

Dr Adrienne van Eeden-Wharton | University of Pretoria

Dr Sophy Kohler | Independent



**ANTARCTICA,
AFRICA
& THE ARTS**

WORKSHOP

23-25 MAY 2022

AGULHAS NATIONAL PARK



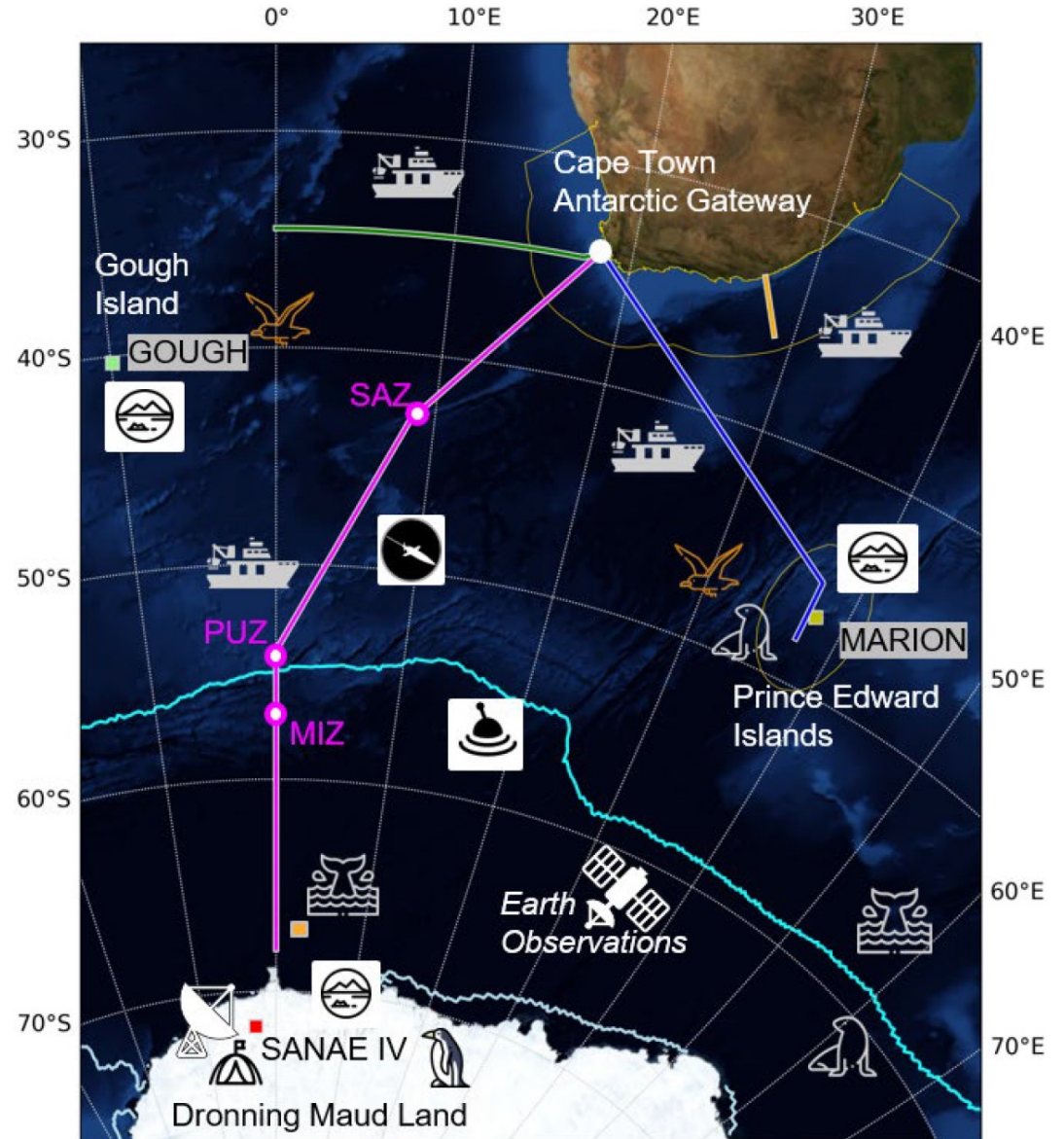
RISA

Research and Innovation
Support and Advancement



UNIVERSITEIT VAN PRETORIA
UNIVERSITY OF PRETORIA
YUNIBESITHI YA PRETORIA







75km
50miles

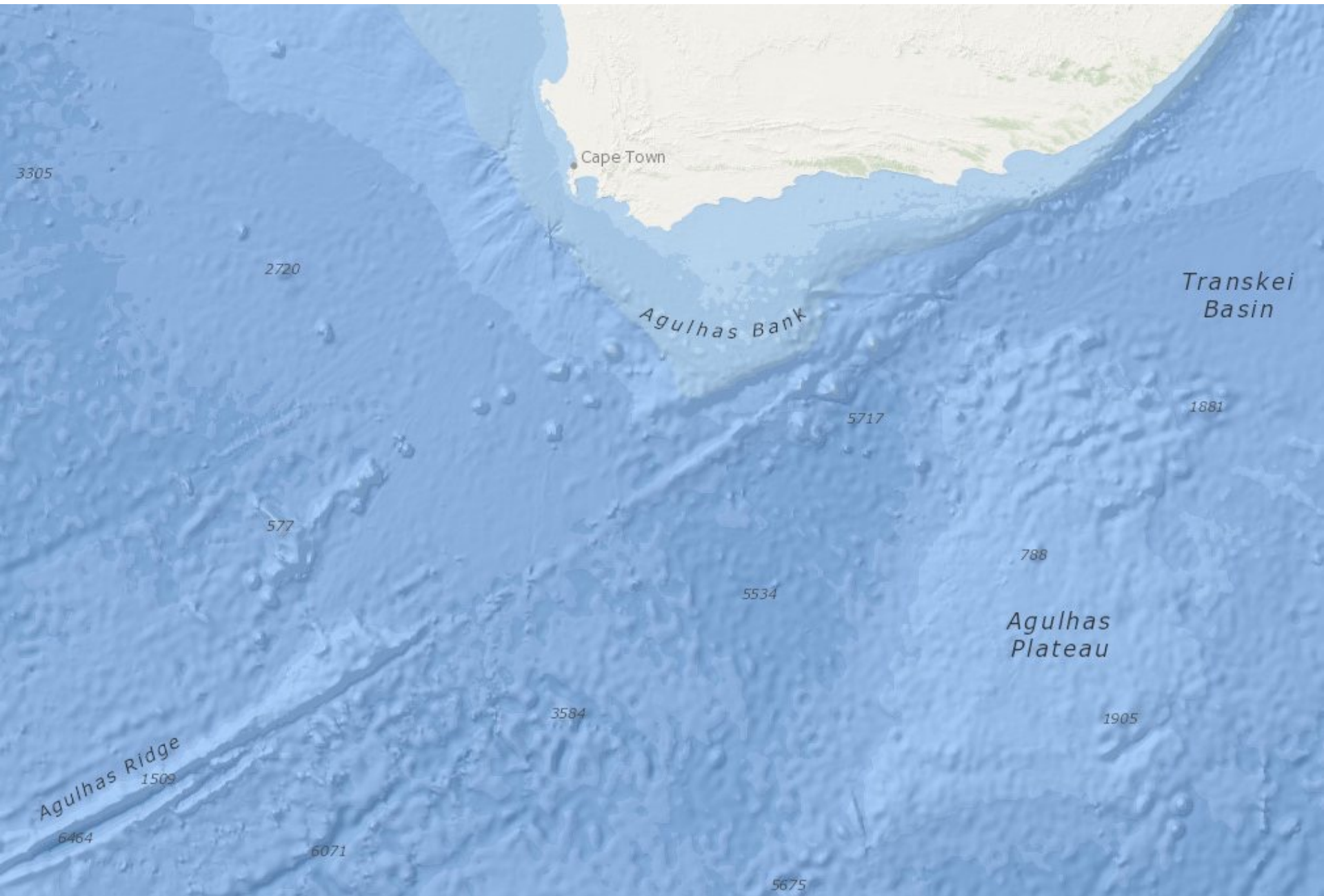


U IS NOU OP DIE MEES
SUIDELIKE PUNT VAN DIE
VASTELAND VAN AFRIKA
KAAP / CAPE L'AGULHAS
YOU ARE NOW AT THE
SOUTHERN-MOST TIP OF THE
CONTINENT OF AFRICA

INDIAN OCEAN | ATLANTIC OCEAN











--- programme

Monday 23 May

09.00 Meet at parking lot of Starke Ayres Garden Centre for shuttle to L'Agulhas

13.00 Welcome lunch at Lagoon House

14.00 Check in (chalets)

15.00 Session 1

Opening offering guided by Toni Giselle Stuart
Charne Lavery, *Introduction to the project*
Jean Brundrit, *Looking through a different lens: photographing in Antarctica*

16.00 Break

16.30 Session 2

Jean McNeil, *The empir(e)ical sublime*
Tertius Kapp, *Extremophilia*
Screening: Victor Gama, *Vela 6911*
Roundtable | Sarah Nuttall, Masande Ntshanga, Safiyyah Moos

17.30 Break

19.00 Supper

Tuesday 24 May

08.00 Breakfast

09.00 Session 3

Geoffrey Grantham, *A brief geological history of Antarctic–Southern African relationships and evolution*
Liesel Rudolph, *A geographer's take on Africa, Art and Antarctica*
Jaco Boshoff, *Marion Island archaeology*

10.30 Break

11.00 Session 4

Toni Stuart, *Ocean Home* performance
Traci Kwaai, *Fisher Child*
Meghna Singh, *Journeys across the ocean: visualising human migrations via the story of three ships in Cape Town*
Adrienne van Eeden-Wharton, *Water/Log*

12.30 Lunch

14.00 Session 5

Isabel Hofmeyr, *Southern African literature through Antarctica*
Sophy Kohler, *Towards a southern poetics of ice*
Charne Lavery, *Postcolonial Antarctica*

15.00 Break

15.30 Session 6

Ria Olivier, *How South Africa became involved in the Antarctic region, including the sub-Antarctic and Southern Ocean*
ALSA digital repository demonstration
Roundtable | Louise Gammage, Toni Giselle Stuart, Tsholofelo Tshenkeng

17.00 Break

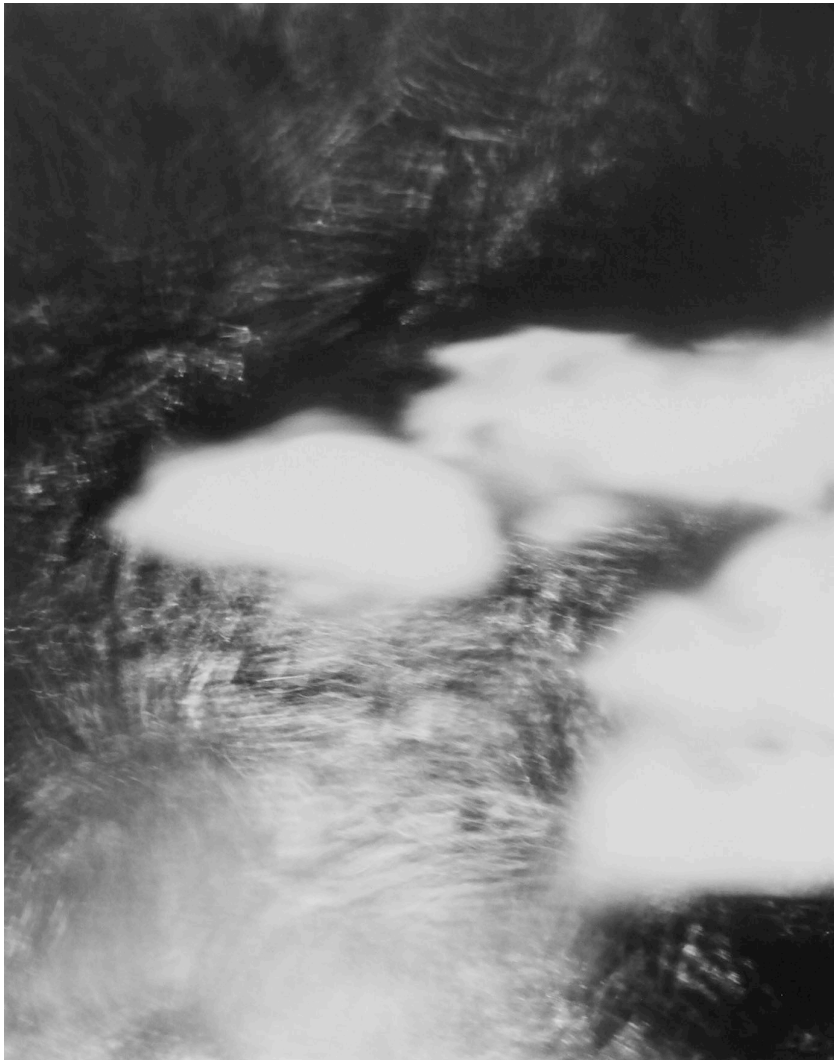
19.00 Supper

Wednesday 25 May

08.00 Breakfast

09.00 Informal discussion | Next steps

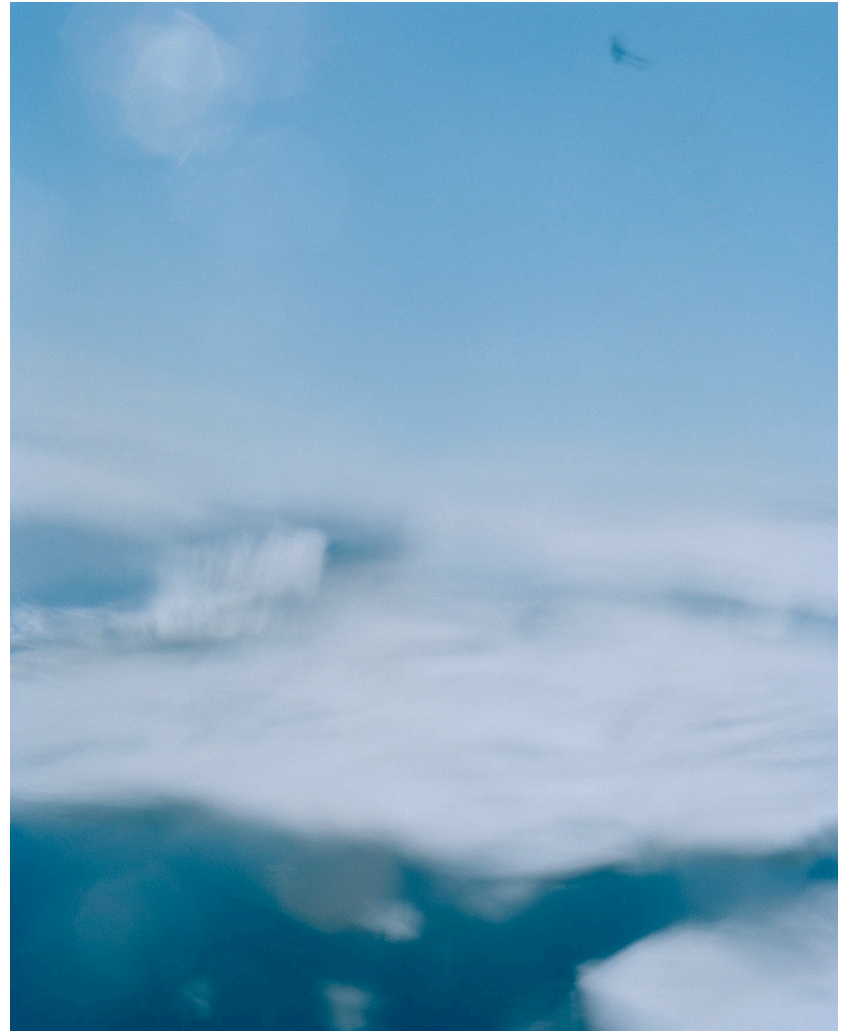
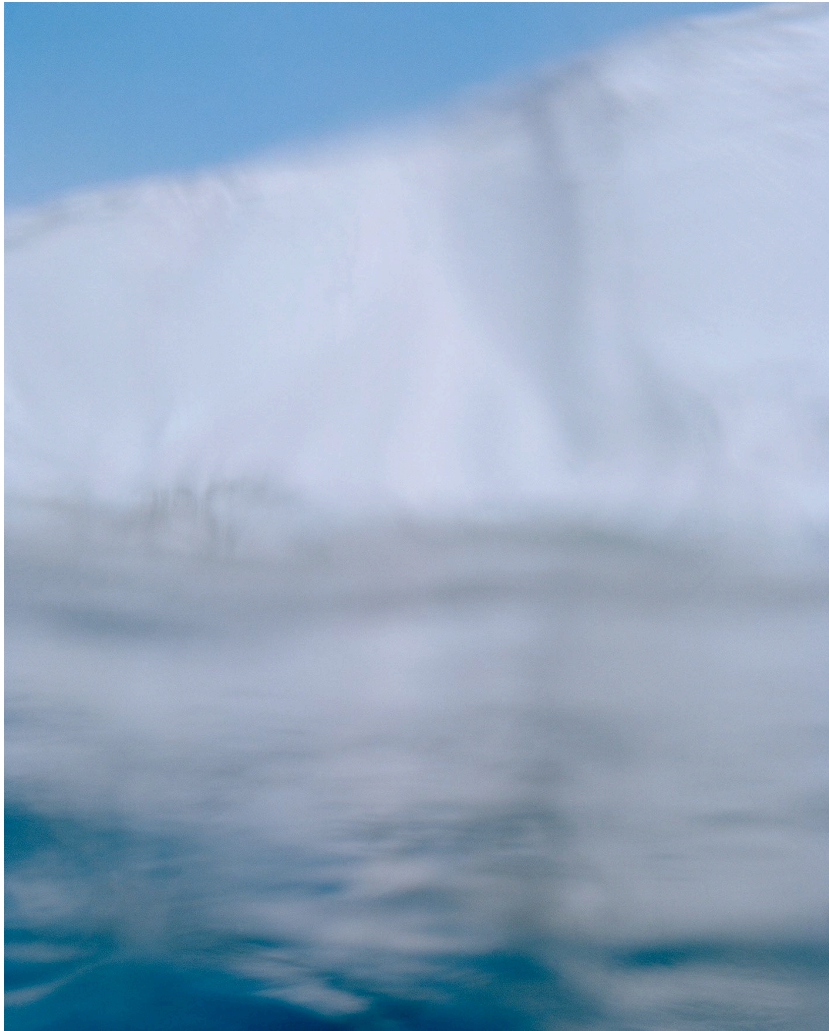
10.00 Check out (chalets) and drive back to Cape Town; option to explore ANP



Jean Brundrit, from *Over the Horizon*.
Handprinted black and white photographs, 2019/2020, 45cm x 36cm



Jean Brundrit, from *Over the Horizon*.
Colour photographs, 2019/2020, 45cm x 36cm



Jean Brundrit, from *Over the Horizon*.
Colour photographs, 2019/2020, 45cm x 36cm

EXTREMOPHILIA

a film at the end of the world





Meghna Singh, *The Rusting Diamond*, Castle of Good Hope installation view.
Photo Credit: Simon Wood



Meghna Singh and Simon Wood, *Container*

A close-up profile of a woman with dark, curly hair, looking out towards the ocean. The background shows a blue sea with white-capped waves under a bright sky. The woman's face is in shadow, with light catching her nose and lips.

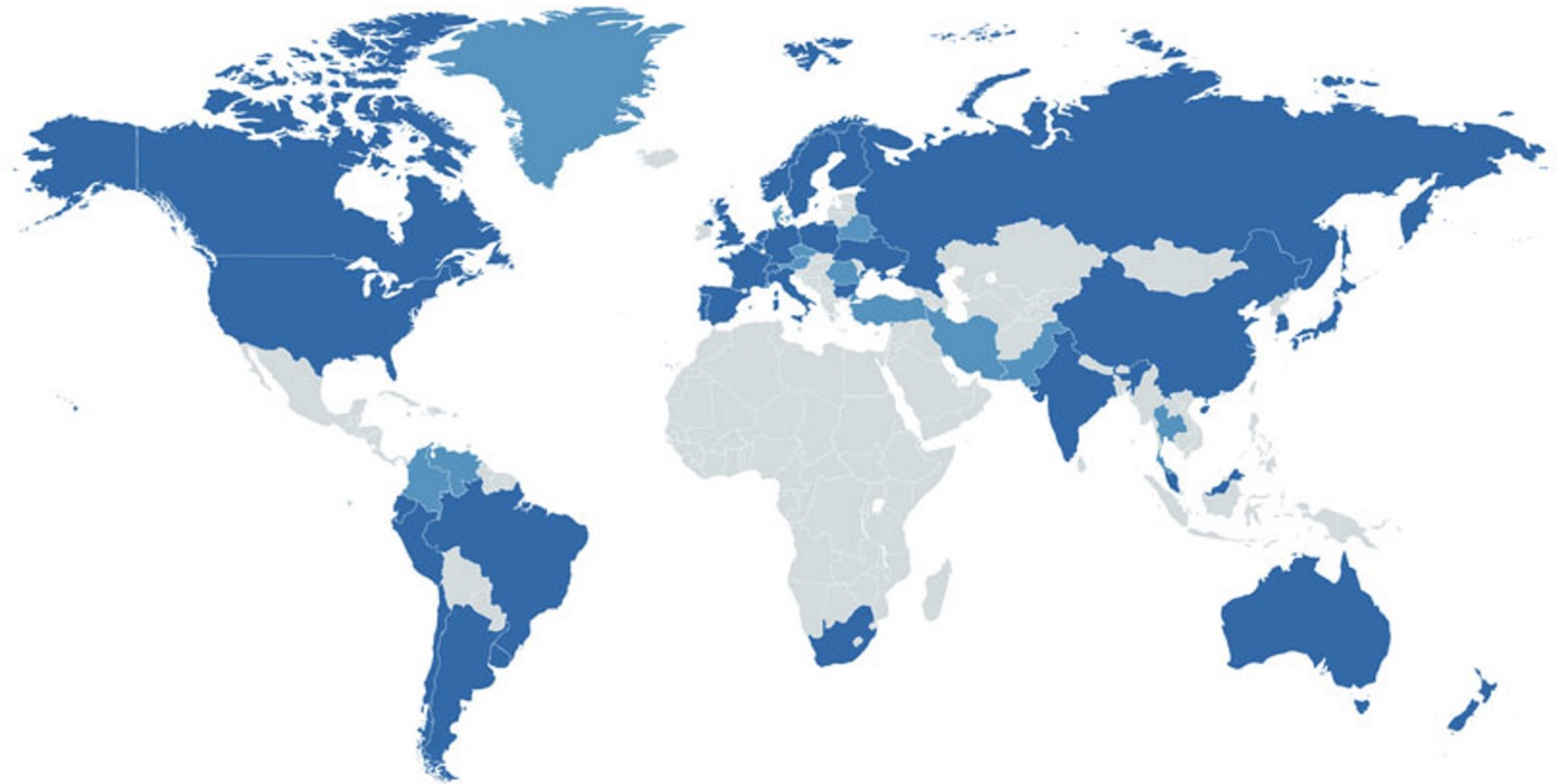
HOT POETS

Toni Giselle Stuart

Ocean Home

THE BEACH CO-OP, SOUTH AFRICA





Map of SCAR membership



science & innovation

Department:
Science and Innovation
REPUBLIC OF SOUTH AFRICA



forestry, fisheries
& the environment

Department:
Forestry, Fisheries and the Environment
REPUBLIC OF SOUTH AFRICA

Dr. Tamaryn Morris and Prof. Marcello Vichi – SAPRI Champions
Prof. Juliet Hermes and Mr. Johan Pauw – SAEON Host Leads

THE SOUTH AFRICAN POLAR RESEARCH INFRASTRUCTURE (SAPRI)

Internationalisation-Collaboration-Integration-Optimisation-
Innovation

Credit: Andrew McDonnell (NSF)

