

The Geology of Annandagstoppane and Juletoppane

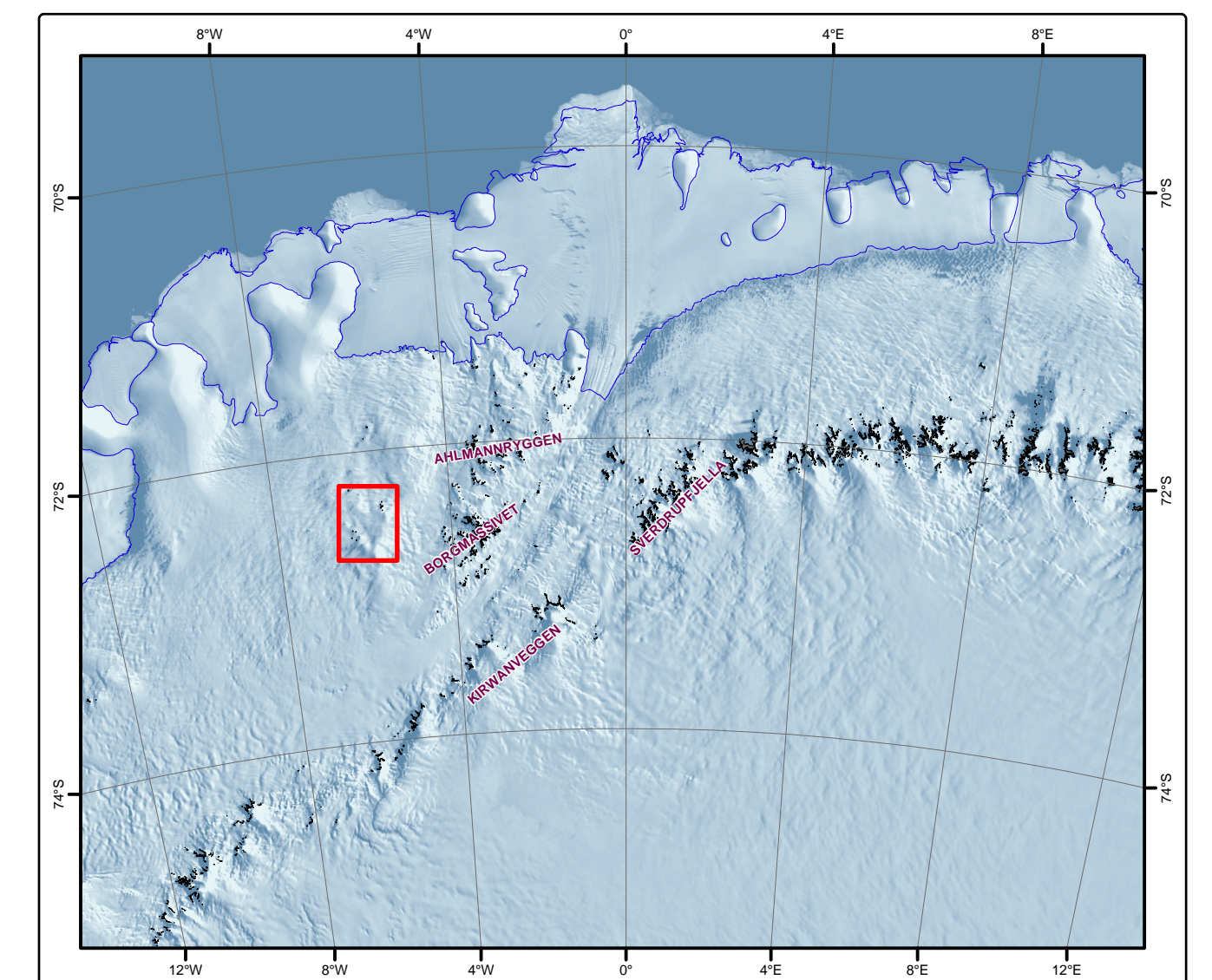
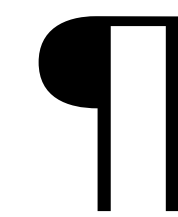
Dronning Maud Land ANTARCTICA

SANAP - 2006

Data compiled from geological mapping done under the auspices of the South African National Antarctic Program

Legend

Faults	Lithology
f - - - Inferred	Bormassivet intrusive suite
f - f Normal	■ gabbronorite
f - / Thrust	Annandagstoppane Granitoids
DD shear zone	■ granite
— Contours 50m interval	
Interpolated structure	
- - - Interpolated contact	
DD Interpolated shear	
- - - Interpolated unconformity	



Scale 1:100,000



Datum: WGS84
Projection: Antarctic Polar Steriographic
Standard parallel: 71° S

